

Translate Fastener Part Numbers

Last updated 04-Jan-2018

[Part Number to Description](#)

[Description to Part Number](#)

Part Number to Description

56934	NIPPLE, GREASE, 90 DEGREE, 1/4" BSP
56935	NIPPLE, GREASE, STRAIGHT, 1/4" BSP
58688	STUD, UNC BOTH ENDS, 3/8" X 1 11/16"
58917	STUD, UNC BOTH ENDS, 3/8" X 1 15/16"
101442	STUD, UNC BOTH ENDS, 3/8" X 1 5/8"
102474	STUD, UNC BOTH ENDS, 3/8" X 2 1/16"
107055	STUD, UNC BOTH ENDS, 3/8" X 2 3/8"
108326	PIN, CLEVIS, 1/8" X 1/2"
115696	STUD, UNC BOTH ENDS, 3/8" X 1 13/16"
125361	NIPPLE, GREASE, 45 DEGREE, 1/4" BSP
144825	NIPPLE, GREASE, STRAIGHT, LONG, 1/8" BSP
600032	CAGE, CAPTIVE NUT, SQUARE, 1/2" AF
624155	CLIP, PIPE, Double, 3/16"
14A7033	GROMMET, 5/8"OD x 3/16"ID
14B2685	NUT, CHROME DOME, 5/16UNF
17H1595	CLIP, HEATERBOX, 3"
18G8579B	SEALS 7/8" DIA SERVO
1B3664	WASHER FIBRE 5/8"
1B4526.	BUSH, ANTIROLLBAR MOUNTING, 5/8"
27H7166	SCREW, BLEED, BRAKE/CLUTCH, 3/8" BSF
2H2065	GROMMET, WIRING, 1-5/8" x 5/8"
2K5291	WASHER, FELT 1/4"
2K5820	WASHER, FELT 3/8"
3H822	GROMMET, 3/4"OD x 1/2"ID
556508A	SCREW, BLEED, BRAKE/CLUTCH, 3/8" UNF
5L489	GROMMET 1-3/4 INCH
5L62	GROMMET 1"OD x 1/8"ID
608400A	SCREW, BLEED, BRAKE/CLUTCH, 10mm metric
6K431	WASHER, CRUSH, 3/4"
6K690	WASHER, FELT 3/16"
AB604021	SCREW, PAN HEAD, SELF TAP, ZINC, UNF, No.4 X 1/4"
AB604023	SCREW, PAN HEAD, SELF TAP, ZINC, UNF, NO.4 X 1"
AB606021	SCREW, PAN HEAD, SELF TAP, ZINC, UNF, No.6 X 1/4"
AB606031	SCREW, PAN HEAD, SELF TAP, ZINC, UNF, No.6 X 3/8"
AB606041	SCREW, PAN HEAD, SELF TAP, ZINC, UNF, No.6 X 1/2"
AB606061	SCREW, PAN HEAD, SELF TAP, ZINC, UNF, No.6 X 3/4"
AB606081	SCREW, PAN HEAD, SELF TAP, ZINC, UNF, No.6 X 1"
AB608041	SCREW, PAN HEAD, SELF TAP, ZINC, UNF, No.8 X 1/2"
AB608061	SCREW, PAN HEAD, SELF TAP, ZINC, UNF, No.8 X 3/4"
AB608081	SCREW, PAN HEAD, SELF TAP, ZINC, UNF, No.8 X 1"
AB610041	SCREW, PAN HEAD, SELF TAP, ZINC, UNC, No.10 X 1/2"
AB610051	SCREW, PAN HEAD, SELF TAP, ZINC, UNC, NO.10 X 5/8"
AB610061	SCREW, PAN HEAD, SELF TAP, ZINC, UNC, No.10 X 3/4"

AB610081	SCREW, PAN HEAD, SELF TAP, ZINC, UNC, No.10 X 1"
AB612041	SCREW, PAN HEAD, SELF TAP, ZINC, UNC, No.12 X 1/2"
AB612061	SCREW, PAN HEAD, SELF TAP, ZINC, UNC, No.12 X 3/4"
AB612081	SCREW, PAN HEAD, SELF TAP, ZINC, UNC, No.12 X 1"
AB614061	SCREW, PAN HEAD, SELF TAP, ZINC, UNC, No.14 X 3/4"
AB614081	SCREW, PAN HEAD, SELF TAP, ZINC, UNC, No.14 X 1"
AC604021	SCREW, CSK, SELF TAP, ZINC, UNF, No.4 X 1/4"
AC606041	SCREW, CSK, SELF TAP, ZINC, UNF, No.6 X 1/2"
AC606061	SCREW, CSK, SELF TAP, ZINC, UNF, No.6 X 3/4"
AC606081	SCREW, CSK, SELF TAP, ZINC, UNF, No.6 X 1"
AC608041	SCREW, CSK, SELF TAP, ZINC, UNF, No.8 X 1/2"
AC608061	SCREW, CSK, SELF TAP, ZINC, UNF, No.8 X 3/4"
AC610041	SCREW, CSK, SELF TAP, ZINC, UNC, No.10 X 1/2"
AC610061	SCREW, CSK, SELF TAP, ZINC, UNC, No.10 X 3/4"
AC610081	SCREW, CSK, SELF TAP, ZINC, UNC, No.10 X 1"
AC612041	SCREW, CSK, SELF TAP, ZINC, UNC, No.12 X 1/2"
AC612081	SCREW, CSK, SELF TAP, ZINC, UNC, No.12 X 1"
AC614061	SCREW, CSK, SELF TAP, ZINC, UNC, No.14 X 3/4"
AC614081	SCREW, CSK, SELF TAP, ZINC, UNC, No.14 X 1"
ACA5521	WASHER, PLAIN, 1/2"
ACB8474	GROMMET
AD606043	SCREW, RAISED CROSS CSK HEAD, SELF TAP, CHROME, NO.6 X 1/2"
AD606053	SCREW, RAISED CROSS CSK HEAD, SELF TAP, CHROME, NO.6 X 5/8"
AD606063	SCREW, RAISED CROSS CSK HEAD, SELF TAP, CHROME, NO.6 X 3/4"
AD606073	SCREW, RAISED CROSS CSK HEAD, SELF TAP, CHROME, NO.6 X 7/8"
AD608033	SCREW, RAISED CROSS CSK HEAD, SELF TAP, CHROME, NO.8 X 3/8"
AD608053	SCREW, RAISED CROSS CSK HEAD, SELF TAP, CHROME, NO.8 X 5/8"
AD608073	SCREW, RAISED CROSS CSK HEAD, SELF TAP, CHROME, NO.8 X 7/8"
AD610063	SCREW, RAISED CROSS CSK HEAD, SELF TAP, CHROME, NO.10 X 3/4"
AEC340	WASHER, LOCKTAB, 1/4" (LOCKS TWO BOLTS)
AEHU1	NUT, BRAKE/CLUTCH/FUEL PIPE, MALE, BRASS, 3/8" UNF PIPE DIA 3/16"
AEHU1A	NUT, BRAKE/CLUTCH/FUEL PIPE, FEMALE, BRASS, 3/8" UNF PIPE DIA 3/16"
AEHU2	NUT, BRAKE/CLUTCH/FUEL PIPE, MALE, BRASS, 10mm x 1mm PIPE DIA 3/16"
AEHU2A	NUT, BRAKE/CLUTCH/FUEL PIPE, FEMALE, BRASS, 10mm x 1mm PIPE DIA 3/16"
AEHU3	NUT, BRAKE/CLUTCH/FUEL PIPE, MALE, BRASS, 3/8" BSF PIPE DIA 3/16"
AEHU4A	NUT, BRAKE/CLUTCH/FUEL PIPE, FEMALE, BRASS, 7/16" UNF PIPE DIA 1/4"
AEHU7	NUT, BRAKE/CLUTCH/FUEL PIPE, MALE, BRASS, 7/16" UNF PIPE DIA 1/4"
AHH6541.	BUSH, ANTIROLLBAR MOUNTING, 9/16"
AHH7921.	BUSH, ANTIROLLBAR MOUNTING, 11/16"
AHH9239	SCREW, CSK, UNF, 1/4" X 1 3/8
AJD7721	WASHER, SPRING, DOUBLE COIL, 3/16"
AJD7722	WASHER, SPRING, DOUBLE COIL, 1/4"
AJD7731	WASHER, SPRING, DOUBLE COIL, 5/16"
AJD7742	WASHER, SPRING, DOUBLE COIL, 3/8"
AN3507	NUT, LOCK, FULL, 1/4"
AN3508	NUT, LOCK, FULL, 5/16"
AN3509	NUT, LOCK, FULL, 3/8"
AN3510	NUT, LOCK, FULL, 7/16"
AN3511	NUT, LOCK, FULL, 1/2"
AUSU40A	NUT, BRAKE/CLUTCH/FUEL PIPE, MALE, STEEL, 1/2" UNF PIPE DIA 5/16"
ACA1270	

	NUT, BRAKE/CLUTCH/FUEL PIPE, MALE, STEEL, 7/16" UNF PIPE DIA 3/16"
BH504091	BOLT, HEX HEAD, UNC, 1/4" X 1 1/8"
BH504111	BOLT, HEX HEAD, UNC, 1/4" X 1 3/8"
BH504121	BOLT, HEX HEAD, UNC, 1/4" X 1 1/2"
BH504141	BOLT, HEX HEAD, UNC, 1/4" X 1 3/4"
BH504161	BOLT, HEX HEAD, UNC, 1/4" X 2"
BH504181	BOLT, HEX HEAD, UNC, 1/4" X 2 1/4"
BH504201	BOLT, HEX HEAD, UNC, 1/4" X 2 1/2"
BH505101	BOLT, HEX, UNC, 5/16" X 1 1/4"
BH505111	BOLT, HEX, UNC, 5/16" X 1 3/8"
BH505121	BOLT, HEX, UNC, 5/16" X 1 1/2"
BH505141	BOLT, HEX, UNC, 5/16" X 1 3/4"
BH505161	BOLT, HEX, UNC, 5/16" X 2"
BH505181	BOLT, HEX, UNC, 5/16" X 2 1/4"
BH505201	BOLT, HEX, UNC, 5/16" X 2 1/2"
BH505241	BOLT, HEX, UNC, 5/16" X 3"
BH506081	BOLT, HEX, UNC, 3/8" X 1"
BH506111	BOLT, HEX, UNC, 3/8" X 1 3/8"
BH506121	BOLT, HEX, UNC, 3/8" X 1 1/2"
BH506141	BOLT, HEX, UNC, 3/8" X 1 3/4"
BH506161	BOLT, HEX, UNC, 3/8" X 2"
BH506181	BOLT, HEX, UNC, 3/8" X 2 1/4"
BH506201	BOLT, HEX, UNC, 3/8" X 2 1/2"
BH506241	BOLT, HEX, UNC, 3/8" X 3"
BH604081	BOLT, HEX HEAD, UNF, 1/4" X 1"
BH604091	BOLT, HEX HEAD, UNF, 1/4" X 1 1/8"
BH604101	BOLT, HEX HEAD, UNF, 1/4" X 1 1/4"
BH604111	BOLT, HEX HEAD, UNF, 1/4" X 1 3/8"
BH604121	BOLT, HEX HEAD, UNF, 1/4" X 1 1/2"
BH604141	BOLT, HEX HEAD, UNF, 1/4" X 1 3/4"
BH604161	BOLT, HEX HEAD, UNF, 1/4" X 2"
BH604181	BOLT, HEX HEAD, UNF, 1/4" X 2 1/4"
BH604201	BOLT, HEX HEAD, UNF, 1/4" X 2 1/2"
BH604221	BOLT, HEX HEAD, UNF, 1/4" X 2 3/4"
BH604241	BOLT, HEX HEAD, UNF, 1/4" X 3"
BH605091	BOLT, HEX HEAD, UNF, 5/16" X 1 1/8"
BH605101	BOLT, HEX HEAD, UNF, 5/16" X 1 1/4"
BH605111	BOLT, HEX HEAD, UNF, 5/16" X 1 3/8"
BH605121	BOLT, HEX HEAD, UNF, 5/16" X 1 1/2"
BH605141	BOLT, HEX HEAD, UNF, 5/16" X 1 3/4"
BH605151	BOLT, HEX HEAD, UNF, 5/16" X 1 7/8"
BH605161	BOLT, HEX HEAD, UNF, 5/16" X 2"
BH605181	BOLT, HEX HEAD, UNF, 5/16" X 2 1/4"
BH605201	BOLT, HEX HEAD, UNF, 5/16" X 2 1/2"
BH605221	BOLT, HEX HEAD, UNF, 5/16" X 2 3/4"
BH605241	BOLT, HEX HEAD, UNF, 5/16" X 3"
BH605401	BOLT, HEX HEAD, UNF, 5/16" X 5"
BH606081	BOLT, HEX HEAD, UNF, 3/8" X 1"
BH606091	BOLT, HEX HEAD, UNF, 3/8" X 1 1/8"
BH606101	BOLT, HEX HEAD, UNF, 3/8" X 1 1/4"
BH606111	

	BOLT, HEX HEAD, UNF, 3/8" X 1 3/8"
BH606121	BOLT, HEX HEAD, UNF, 3/8" X 1 1/2"
BH606141	BOLT, HEX HEAD, UNF, 3/8" X 1 3/4"
BH606161	BOLT, HEX HEAD, UNF, 3/8" X 2"
BH606181	BOLT, HEX HEAD, UNF, 3/8" X 2 1/4"
BH606201	BOLT, HEX HEAD, UNF, 3/8" X 2 1/2"
BH606221	BOLT, HEX HEAD, UNF, 3/8" X 2 3/4"
BH606241	BOLT, HEX HEAD, UNF, 3/8" X 3"
BH606261	BOLT, HEX HEAD, UNF, 3/8" X 3 1/4"
BH606281	BOLT, HEX HEAD, UNF, 3/8" X 3 1/2"
BH606301	BOLT, HEX HEAD, UNF, 3/8" X 3 3/4"
BH606321	BOLT, HEX HEAD, UNF, 3/8" X 4"
BH607121	BOLT, HEX HEAD, UNF, 7/16" X 1 1/2"
BH607141	BOLT, HEX HEAD, UNF, 7/16" X 1 3/4"
BH607161	BOLT, HEX HEAD, UNF, 7/16" X 2"
BH607181	BOLT, HEX HEAD, UNF, 7/16" X 2 1/4"
BH607201	BOLT, HEX HEAD, UNF, 7/16" X 2 1/2"
BH607241	BOLT, HEX HEAD, UNF, 7/16" X 3"
BH608141	BOLT, HEX HEAD, UNF, 1/2" X 1 3/4"
BH608161	BOLT, HEX HEAD, UNF, 1/2" X 2"
BH608181	BOLT, HEX HEAD, UNF, 1/2" X 2 1/4"
BH608201	BOLT, HEX HEAD, UNF, 1/2" X 2 1/2"
BH608241	BOLT, HEX HEAD, UNF, 1/2" X 3"
BHA4706	NUT, BRAKE/CLUTCH/FUEL PIPE, MALE, STEEL, 7/16" UNF PIPE DIA 1/4"
BLS106	BALL, STEEL, 3/16"
BLS108	BALL, STEEL, 1/4"
BLS110	BALL, STEEL, 5/16"
BLS112	BALL, STEEL, 3/8"
BLS28	BALL, STEEL, 7/16"
BMK385	CLIP, FUEL PIPE, 1/4"
BNN105	NUT, HEX BRASS, UNF, 5/16"
C5192A	BOLT, BANJO, UNF3/8"
CFP1000	GROMMET, BLANKING, PLASTIC, 1"
CFP375	GROMMET, BLANKING, PLASTIC, 3/8"
CFP500	GROMMET, BLANKING, PLASTIC, 1/2"
CFP625	GROMMET, BLANKING, PLASTIC, 5/8"
CFP750	GROMMET, BLANKING, PLASTIC, 3/4"
CHS2513	STUD, 5/16"x1-5/8", UNC/UNF
CLZ307	PIN, CLEVIS, LENGTH IS FROM UNDER HEAD TO CENTRE OF HOLE, 3/16" X 7/16"
CLZ308	PIN, CLEVIS, LENGTH IS FROM UNDER HEAD TO CENTRE OF HOLE, 3/16" X 1/2"
CLZ309	PIN, CLEVIS, LENGTH IS FROM UNDER HEAD TO CENTRE OF HOLE, 3/16" X 9/16"
CLZ310	PIN, CLEVIS, LENGTH IS FROM UNDER HEAD TO CENTRE OF HOLE, 3/16" X 5/8"
CLZ311	PIN, CLEVIS, LENGTH IS FROM UNDER HEAD TO CENTRE OF HOLE, 3/16" X 11/16"
CLZ312	PIN, CLEVIS, LENGTH IS FROM UNDER HEAD TO CENTRE OF HOLE, 3/16" X 3/4"
CLZ313	PIN, CLEVIS, LENGTH IS FROM UNDER HEAD TO CENTRE OF HOLE, 3/16" X 13/16"
CLZ314	PIN, CLEVIS, LENGTH IS FROM UNDER HEAD TO CENTRE OF HOLE, 3/16" X 7/8"
CLZ315	PIN, CLEVIS, LENGTH IS FROM UNDER HEAD TO CENTRE OF HOLE, 3/16" X 15/16"
CLZ316	PIN, CLEVIS, LENGTH IS FROM UNDER HEAD TO CENTRE OF HOLE, 3/16" X 1"
CLZ317	PIN, CLEVIS, LENGTH IS FROM UNDER HEAD TO CENTRE OF HOLE, 3/16" X 1 1/16"
CLZ408	PIN, CLEVIS, LENGTH IS FROM UNDER HEAD TO CENTRE OF HOLE, 1/4" X 1/2"

	PIN, CLEVIS, LENGTH IS FROM UNDER HEAD TO CENTRE OF HOLE, 1/4" X 9/19"
CLZ410	PIN, CLEVIS, LENGTH IS FROM UNDER HEAD TO CENTRE OF HOLE, 1/4" X 5/8"
CLZ411	PIN, CLEVIS, LENGTH IS FROM UNDER HEAD TO CENTRE OF HOLE, 1/4" X 11/16"
CLZ412	PIN, CLEVIS, LENGTH IS FROM UNDER HEAD TO CENTRE OF HOLE, 1/4" X 3/4"
CLZ413	PIN, CLEVIS, LENGTH IS FROM UNDER HEAD TO CENTRE OF HOLE, 1/4" X 13/16"
CLZ414	PIN, CLEVIS, LENGTH IS FROM UNDER HEAD TO CENTRE OF HOLE, 1/4" X 7/8"
CLZ415	PIN, CLEVIS, LENGTH IS FROM UNDER HEAD TO CENTRE OF HOLE, 1/4" X 15/16"
CLZ416	PIN, CLEVIS, LENGTH IS FROM UNDER HEAD TO CENTRE OF HOLE, 1/4" X 1"
CLZ417	PIN, CLEVIS, LENGTH IS FROM UNDER HEAD TO CENTRE OF HOLE, 1/4" X 1 1/16"
CLZ427	PIN, CLEVIS, LENGTH IS FROM UNDER HEAD TO CENTRE OF HOLE, 1/4" X 1 11/16"
CLZ510	PIN, CLEVIS, LENGTH IS FROM UNDER HEAD TO CENTRE OF HOLE, 5/16" X 5/8"
CLZ511	PIN, CLEVIS, LENGTH IS FROM UNDER HEAD TO CENTRE OF HOLE, 5/16" X 11/16"
CLZ512	PIN, CLEVIS, LENGTH IS FROM UNDER HEAD TO CENTRE OF HOLE, 5/16" X 3/4"
CLZ513	PIN, CLEVIS, LENGTH IS FROM UNDER HEAD TO CENTRE OF HOLE, 5/16" X 13/16"
CLZ514	PIN, CLEVIS, LENGTH IS FROM UNDER HEAD TO CENTRE OF HOLE, 5/16" X 7/8"
CLZ515	PIN, CLEVIS, LENGTH IS FROM UNDER HEAD TO CENTRE OF HOLE, 5/16" X 15/16"
CLZ516	PIN, CLEVIS, LENGTH IS FROM UNDER HEAD TO CENTRE OF HOLE, 5/16" X 1"
CLZ517	PIN, CLEVIS, LENGTH IS FROM UNDER HEAD TO CENTRE OF HOLE, 5/16" X 1 1/16"
CLZ518	PIN, CLEVIS, LENGTH IS FROM UNDER HEAD TO CENTRE OF HOLE, 5/16" X 1 1/18"
CMP308	SCREW, CROSS HEAD, CSK, CHROME, UNF, NO.10 X 1/2"
CMP310	SCREW, CROSS HEAD, CSK, CHROME, UNF, NO.10 X 5/8"
CMZ203	SCREW, CROSS HEAD, CSK, ZINC, UNF, NO.6 X 3/16"
CMZ204	SCREW, CROSS HEAD, CSK, ZINC, UNF, NO.6 X 1/4"
CMZ208	SCREW, CROSS HEAD, CSK, ZINC, UNF, NO.6 X 1/2"
CMZ304	SCREW, CROSS HEAD, CSK, ZINC, UNF, NO.10 X 1/4"
CMZ305	SCREW, CROSS HEAD, CSK, ZINC, UNF, NO.10 X 5/16"
CMZ306	SCREW, CROSS HEAD, CSK, ZINC, UNF, NO.10 X 3/8"
CMZ307	SCREW, CROSS HEAD, CSK, ZINC, UNF, NO.10 X 7/16"
CMZ308	SCREW, CROSS HEAD, CSK, ZINC, UNF, NO.10 X 1/2"
CMZ310	SCREW, CROSS HEAD, CSK, ZINC, UNF, NO.10 X 5/8"
CMZ312	SCREW, CROSS HEAD, CSK, ZINC, UNF, NO.10 X 3/4"
CMZ316	SCREW, CROSS HEAD, CSK, ZINC, UNF, NO.10 X 1"
CMZ407	SCREW, CROSS HEAD, CSK, ZINC, UNF, 1/4", 7/16"
CMZ408	SCREW, CROSS HEAD, CSK, ZINC, UNF, 1/4", 1/2"
CMZ410	SCREW, CROSS HEAD, CSK, ZINC, UNF, 1/4", 5/8"
CMZ412	SCREW, CROSS HEAD, CSK, ZINC, UNF, 1/4", 3/4"
CMZ414	SCREW, CROSS HEAD, CSK, ZINC, UNF, 1/4", 7/8"
CMZ416	SCREW, CROSS HEAD, CSK, ZINC, UNF, 1/4", 1"
CMZ420	SCREW, CROSS HEAD, CSK, ZINC, UNF, 1/4", 1 1/4"
CMZ428	SCREW, CROSS HEAD, CSK, ZINC, UNF, 1/4", 1 3/4"
CMZ512	SCREW, CROSS HEAD, CSK, ZINC, UNF, 5/16, 3/4"
CMZ516	SCREW, CROSS HEAD, CSK, ZINC, UNF, 5/16", 1"
CN2	CAGE, CAPTIVE NUT, SQUARE, 7/16" AF
CN3	CAGE, CAPTIVE NUT, OBLONG, 7/16" AF
CN4	NUT, CAPTIVE, USE CAGE CN3, 1/4"
CN5	NUT, CAPTIVE, USE CAGE, 60032, 5/16"
CNZ102	NUT, HEX, ZINC, UNF, NO.6
CP105081	CLIP, P-CLIP, METRIC, FIXING HOLE, 5mm CABLE DIA 8mm
CP106161	CLIP, P-CLIP, METRIC, FIXING HOLE, 6mm CABLE DIA 16mm
CP108101	CLIP, P-CLIP, METRIC, FIXING HOLE, 8mm CABLE DIA 10mm
CP108121	

	CLIP, P-CLIP, METRIC, FIXING HOLE, 8mm CABLE DIA 12mm
CP108165	CLIP, P-CLIP, METRIC, FIXING HOLE, 8mm CABLE DIA 16mm
CS4009	CLIP, HOSE, WIRE, 7/16" - 9/16"
CS4011	CLIP, HOSE, WIRE, 1/2" - 11/16"
CS4012	CLIP, HOSE, WIRE, 9/16" - 3/4"
CS4013	CLIP, HOSE, WIRE, 5/8" - 13/16"
CS4014	CLIP, HOSE, WIRE, 11/16" - 7/8"
CS4016	CLIP, HOSE, WIRE, 3/4" - 1"
CS4017	CLIP, HOSE, WIRE, 13/16" - 1 1/16"
CS4018	CLIP, HOSE, WIRE, 7/8" - 1 1/8"
CS4020	CLIP, HOSE, WIRE, 1" - 1 1/4"
CS4022	CLIP, HOSE, WIRE, 1 1/8" - 1 3/8"
CS4023	CLIP, HOSE, WIRE, 1 1/4" - 1 7/16"
CS4024	CLIP, HOSE, WIRE, 1 5/16" - 1 1/2"
CS4025	CLIP, HOSE, WIRE, 1 3/8" - 1 9/16"
CS4026	CLIP, HOSE, WIRE, 1 7/16" - 1 5/8"
CS4028	CLIP, HOSE, WIRE, 1 9/16" - 1 3/4"
CS4029	CLIP, HOSE, WIRE, 1 5/8" - 1 13/16"
CS4030	CLIP, HOSE, WIRE, 1 11/16" - 1 7/8"
CS4032	CLIP, HOSE, WIRE, 1 7/8" - 2"
CS4034	CLIP, HOSE, WIRE, 1 15/16" - 2 1/8"
CS4036	CLIP, HOSE, WIRE, 2 1/16" - 2 1/4"
CS4037	CLIP, HOSE, WIRE, 2 1/8" - 2 5/16"
CS4038	CLIP, HOSE, WIRE, 2 3/16" - 2 7/16"
CS4039	CLIP, HOSE, WIRE, 2 1/4" - 2 7/16"
CS4040	CLIP, HOSE, WIRE, 2 5/16" - 2 1/2"
CS4041	CLIP, HOSE, WIRE, 2 3/8" - 2 9/16"
CS4042	CLIP, HOSE, WIRE, 2 7/16" - 2 5/8"
CS4048	CLIP, HOSE, WIRE, 2 13/16" - 3"
CS4052	CLIP, HOSE, WIRE, 3 1/16" - 3 1/4"
CS4064	CLIP, HOSE, WIRE, 3 13/16" - 4"
DP204	DOWEL, 1/8" X 1/4"
DP205	DOWEL, 1/8" X 5/16"
DP306	DOWEL, 3/16" X 3/8"
DP407	DOWEL, 1/4" X 7/16"
DP408	DOWEL, 1/4" X 1/2"
DP410	DOWEL, 1/4" X 5/8"
DP411	DOWEL, 1/4" X 11/16"
DP414	DOWEL, 1/4" X 7/8"
DP508	DOWEL, 5/16" X 1/2"
DP514	DOWEL, 5/16" X 7/8"
DP608	DOWEL, 3/8" X 1/2"
DP610	DOWEL, 3/8" X 5/8"
DP619	DOWEL, 3/8" X 1 3/16"
FNN104	NUT, HEX, PLAIN, UNF, 1/4"
FNN105	NUT, HEX, PLAIN, UNF, 5/16"
FNN107	NUT, HEX, PLAIN, UNF, 7/16"
FNN207	NUT, LOCK, HEX, PLAIN, UNF, 7/16"
FNN604	NUT, LOCK, HEX, PLAIN, HIGH TENSILE, UNF, 1/4"
FNP103	NUT, LOCK, HEX, CHROME, UNF, NO.10
FNP205	

	NUT, LOCK, HEX, PLAIN, UNF, 5/16"
FNZ103	NUT, HEX, ZINC, UNF, NO.10
FNZ104	NUT, HEX, ZINC, UNF, 1/4"
FNZ105	NUT, HEX, ZINC, UNF, 5/16"
FNZ106	NUT, HEX, ZINC, UNF, 3/8"
FNZ107	NUT, HEX, ZINC, UNF, 7/16"
FNZ108	NUT, HEX, ZINC, UNF, 1/2"
FNZ204	NUT, LOCK, HEX, ZINC, UNF, 1/4"
FNZ205	NUT, LOCK, HEX, ZINC, UNF, 5/16"
FNZ206	NUT, LOCK, HEX, ZINC, UNF, 3/8"
FNZ308	NUT, HEX, SLOTTED, THICK, ZINC, UNF, 1/2"
FNZ407	NUT, HEX, SLOTTED, ZINC, UNF, 7/16"
FNZ408	NUT, HEX, SLOTTED, ZINC, UNF, 1/2"
FNZ504	NUT, HEX, HIGH TENSILE, ZINC, UNF, 1/4"
FNZ505	NUT, HEX, HIGH TENSILE, ZINC, UNF, 5/16"
FNZ506	NUT, HEX, HIGH TENSILE, ZINC, UNF, 3/8"
FNZ507	NUT, HEX, HIGH TENSILE, ZINC, UNF, 7/16"
FNZ508	NUT, HEX, HIGH TENSILE, ZINC, UNF, 1/2"
FNZ512	NUT, HEX, HIGH TENSILE, ZINC, UNF, 3/4"
FNZ604	NUT, HEX, LOCK, HIGH TENSILE, ZINC, UNF, 1/4"
FNZ607	NUT, HEX, LOCK, HIGH TENSILE, ZINC, UNF, 7/16"
FNZ612	NUT, HEX, LOCK, HIGH TENSILE, ZINC, UNF, 3/4"
GGT1108X	CLIP, PETROL PIPE, ENOT, 8mm
GGT1109X	CLIP, PETROL PIPE, ENOT, 9mm
GGT1110X	CLIP, PETROL PIPE, ENOT, 10mm
GGT1111X	CLIP, PETROL PIPE, ENOT, 11mm
GGT1112X	CLIP, PETROL PIPE, ENOT, 12mm
GGT1113X	CLIP, PETROL PIPE, ENOT, 13mm
GGT1114X	CLIP, PETROL PIPE, ENOT, 14mm
GGT1115X	CLIP, PETROL PIPE, ENOT, 15mm
GGT1116X	CLIP, PETROL PIPE, ENOT, 16mm
GGT1117X	CLIP, PETROL PIPE, ENOT, 17mm
GHC1015	CLIP, HOSE, JUBILEE, STEEL, 1 3/8" - 2"
GHC10408	CLIP, HOSE, JUBILEE, STAINLESS, 8-12mm
GHC10410	CLIP, HOSE, JUBILEE, STAINLESS, 12-18mm
GHC10411	CLIP, HOSE, JUBILEE, STAINLESS, 8-16mm
GHC10412	CLIP, HOSE, JUBILEE, STAINLESS, 12-20mm
GHC10413	CLIP, HOSE, JUBILEE, STAINLESS, 16-25mm
GHC10414	CLIP, HOSE, JUBILEE, STAINLESS, 20-32mm
GHC10415	CLIP, HOSE, JUBILEE, STAINLESS, 25-40mm
GHC10416	CLIP, HOSE, JUBILEE, STAINLESS, 32-50mm
GHC10417	CLIP, HOSE, JUBILEE, STAINLESS, 46-60mm
GHC10418	CLIP, HOSE, JUBILEE, STAINLESS, 50-70mm
GHC10419	CLIP, HOSE, JUBILEE, STAINLESS, 60-80mm
GHC10420	CLIP, HOSE, JUBILEE, STAINLESS, 70-90mm
GHC10421	CLIP, HOSE, JUBILEE, STAINLESS, 80-100mm
GHC1217	CLIP, HOSE, JUBILEE, STEEL, 1 1/2" - 2 1/4"
GHC1622	CLIP, HOSE, JUBILEE, STEEL, 2" - 2 3/4"
GHC2228	CLIP, HOSE, JUBILEE, STEEL, 2 3/4" - 3 1/2"
GHC2632	CLIP, HOSE, JUBILEE, STEEL, 3 1/4" - 4"
GHC2636	

	CLIP, HOSE, JUBILEE, STEEL, 3 3/4" - 4 1/2"
GHC304	CLIP, HOSE, JUBILEE, STEEL, 3/8" - 1/2"
GHC3340	CLIP, HOSE, JUBILEE, STEEL, 4 1/8" - 5"
GHC405	CLIP, HOSE, JUBILEE, STEEL, 7/16" - 5/8"
GHC406	CLIP, HOSE, JUBILEE, STEEL, 1/2" - 3/4"
GHC507	CLIP, HOSE, JUBILEE, STEEL, 5/8" - 7/8"
GHC608	CLIP, HOSE, JUBILEE, STEEL, 3/4" - 1"
GHC709	CLIP, HOSE, JUBILEE, STEEL, 5/8" - 1 1/8"
GHC811	CLIP, HOSE, JUBILEE, STEEL, 1" - 1 3/8"
GHC913	CLIP, HOSE, JUBILEE, STEEL, 1 1/8" - 1 5/8"
GHF104	BOLT, UNF, 5/16" X 1 1/2"
GHF105	BOLT, UNF, 3/8" X 1" (shorter of the two starter motor mounting bolts)
GHF106	BOLT, UNF, 3/8" X 1 1/2"
GHF117	SCREW 1/4" UNF x 0.75"
GHF1191	CLIP, PIPE, Single, 3/16"
GHF1192	CLIP, PIPE, Single, 1/4"
GHF200	NUT, PLAIN, FULL, 1/4" UNF X 7/16"
GHF201	NUT, PLAIN, FULL, 5/16" UNF X 1/2"
GHF202	NUT, PLAIN, FULL, 3/8" UNF X 9/16"
GHF203	NUT, PLAIN, FULL, 7/16" UNF X 5/8"
GHF204	NUT, PLAIN, FULL, 1/2" UNF X 3/4"
GHF206	NUT, PLAIN, FULL, SPANNER SIZE 5/16", 3/16"
GHF207	NUT, PLAIN, FULL, 1/4" UNC X 7/16"
GHF208	NUT, PLAIN, FULL, 5/16" UNC X 1/2"
GHF209	NUT, PLAIN, FULL, 3/8" UNC X 9/16"
GHF211	NUT M4 METRIC
GHF220	NUT, NYLOC, FULL, 3/16" UNF
GHF2203	NUT, NYLOC, FULL 3/16" UNF X 3/8"
GHF221	NUT, NYLOC, FULL, 1/4" UNF
GHF222	NUT, NYLOC, FULL, 5/16" UNF
GHF223	NUT, NYLOC, FULL, 3/8" UNF
GHF224	NUT, NYLOC, FULL, 7/16" UNF
GHF225	NUT, NYLOC, FULL, 1/2" UNF
GHF226	NUT, NYLOC, FULL, 5/8" UNF
GHF241	NUT, LOCKING, 1/4" UNF
GHF242	NUT, LOCKING, 5/16" UNF
GHF243	NUT, LOCKING, 3/8" UNF
GHF244	NUT, LOCKING, 7/16" UNF
GHF245	NUT, LOCKING, 1/2" UNF
GHF261	NUT, BRASS, PLAIN, 5/16" UNF
GHF262	NUT, BRASS, PLAIN, 3/8" UNF
GHF269	NUT, BRASS, PLAIN, 3/8" UNC
GHF270	NUT, BRASS, PLAIN, 5/16" UNC
GHF271	NUT, NYLOC, HALF, 1/4"
GHF272	NUT, NYLOC, HALF, 5/16" UNF
GHF273	NUT, NYLOC, HALF, 3/8" UNF
GHF274	NUT, NYLOC, HALF, 7/16" UNF
GHF275	NUT, NYLOC, HALF, 1/2" UNF
GHF276	NUT, NYLOC, HALF, 5/8" UNF
GHF300	WASHER, PLAIN, STANDARD, 1/4"
GHF301	

	WASHER, PLAIN, STANDARD, 5/16"
GHF302	WASHER, PLAIN, STANDARD, 3/8"
GHF303	WASHER, PLAIN, STANDARD, 7/16"
GHF304	WASHER, PLAIN, STANDARD, 1/2"
GHF306	WASHER, PLAIN, STANDARD, 3/16"
GHF314	WASHER, FLAT, LARGE 1/4 X 1" OD
GHF315	WASHER, FLAT, LARGE, 5/16 X 1-1/4" OD
GHF316	WASHER, FLAT, LARGE, 3/8 X 1-3/8" OD
GHF320	WASHER, SHAKEPROOF, INTERNAL STAR, 3/16"
GHF321	WASHER, SHAKEPROOF, INTERNAL STAR, 1/4"
GHF322	WASHER, SHAKEPROOF, INTERNAL STAR, 5/16"
GHF323	WASHER, SHAKEPROOF, INTERNAL STAR, 3/8"
GHF324	WASHER, SHAKEPROOF, INTERNAL STAR, 7/16"
GHF325	WASHER, SHAKEPROOF, INTERNAL STAR, 1/2"
GHF326	WASHER, SHAKEPROOF, INTERNAL STAR, 5/8"
GHF330	WASHER, SPRING, 3/16"
GHF331	WASHER, SPRING, SINGLE COIL, 1/4"
GHF332	WASHER, SPRING, SINGLE COIL, 5/16"
GHF333	WASHER, SPRING, SINGLE COIL, 3/8"
GHF334	WASHER, SPRING, SINGLE COIL, 7/16"
GHF335	WASHER, SPRING, SINGLE COIL, 1/2"
GHF336	WASHER, SPRING, SINGLE COIL, 5/8"
GHF342	WASHER, SEALING, FIBRE, 1/4"
GHF343	WASHER, SEALING, FIBRE, 5/16"
GHF344	WASHER, SEALING, FIBRE, 3/8"
GHF345	WASHER, SEALING, FIBRE, 7/16"
GHF346	WASHER, SEALING, FIBRE, 1/2"
GHF347	WASHER, SEALING, FIBRE, 9/16"
GHF348	WASHER, SEALING, FIBRE, 5/8"
GHF361	WASHER, SEALING, COPPER, 1/4"
GHF362	WASHER, SEALING, COPPER, 5/16"
GHF363	WASHER, SEALING, COPPER, 3/8"
GHF364	WASHER, SEALING, COPPER, 7/16"
GHF365	WASHER, SEALING, COPPER, 1/2"
GHF400	SCREW, SELF TAP, ZINC No.6 X 1/2"(AC606041)
GHF421	SCREW 6X 1/2 AB606041, SELF TAP
GHF431	SCREW, PK, No.14 x 1", SELF TAP
GHF500	PIN, SPLIT, 1/16" X 1 1/2"
GHF501	PIN, SPLIT, 5/64" X 1 1/2"
GHF502	PIN, SPLIT, 3/32" X 1 1/2"
GHF503	PIN, SPLIT, 7/64" X 2 1/4"
GHF504	PIN, SPLIT, 1/8" X 2 1/4"
GHF505	PIN, SPLIT, 9/64" X 2 1/4"
GHF506	PIN, SPLIT, 3/32" X 2 1/4"
GHF513	PIN, SPLIT, 3/16" X 3"
GHF700	NUT, SPIRE, FLAT, No.6
GHF701	NUT, SPIRE, FLAT, No.8
GHF702	NUT, SPIRE, FLAT, No.10
GHF703	NUT, SPIRE, FLAT, No.12
GHF704	NUT, SPIRE, FLAT, No.14
GHF711	

	NUT, SPIRE, FOLDED, No.6
GHF712	NUT, SPIRE, FOLDED, No.8
GHF713	NUT, SPIRE, FOLDED, No.10
GHF714	NUT, SPIRE, FOLDED, No.12
HBN412	BOLT, HEX HEAD, UNF, PLAIN, 1/4" X 1 1/2"
HBZ408	BOLT, HEX HEAD, UNF, ZINC, 1/4" X 1"
HBZ418	BOLT, HEX HEAD, UNF, ZINC, 1/4" X 2 1/4"
HBZ422	BOLT, HEX HEAD, UNF, ZINC, 1/4" X 2 3/4"
HBZ510	BOLT, HEX HEAD, UNF, ZINC, 5/16" X 1 1/4"
HBZ511	BOLT, HEX HEAD, UNF, ZINC, 5/16" X 1 3/8"
HBZ512	BOLT, HEX HEAD, UNF, ZINC, 5/16" X 1 1/2"
HBZ513	BOLT, HEX HEAD, UNF, ZINC, 5/16" X 1 5/8"
HBZ514	BOLT, HEX HEAD, UNF, ZINC, 5/16" X 1 3/4"
HBZ515	BOLT, HEX HEAD, UNF, ZINC, 5/16" X 1 7/8"
HBZ516	BOLT, HEX HEAD, UNF, ZINC, 5/16" X 2"
HBZ518	BOLT, HEX HEAD, UNF, ZINC, 5/16" X 2 1/4"
HBZ520	BOLT, HEX HEAD, UNF, ZINC, 5/16" X 2 1/2"
HBZ522	BOLT, HEX HEAD, UNF, ZINC, 5/16" X 2 3/4"
HBZ524	BOLT, HEX HEAD, UNF, ZINC, 5/16" X 3"
HBZ528	BOLT, HEX HEAD, UNF, ZINC, 5/16" X 3 1/2"
HBZ612	BOLT, HEX HEAD, UNF, ZINC, 3/8" X 1 1/2"
HBZ614	BOLT, HEX HEAD, UNF, ZINC, 3/8" X 1 3/4"
HBZ616	BOLT, HEX HEAD, UNF, ZINC, 3/8" X 2"
HBZ632	BOLT, HEX HEAD, UNF, ZINC, 3/8" X 4"
HBZ726	BOLT, HEX HEAD, UNF, ZINC, 7/16" X 3 1/4"
HBZ732	BOLT, HEX HEAD, UNF, ZINC, 7/16" X 4"
HCZ518	BOLT, HEX HEAD, UNC, ZINC, 5/16" X 2 1/4"
HCZ608	BOLT, HEX HEAD, UNC, ZINC, 3/8" X 1"
HCZ613	BOLT, HEX HEAD, UNC, ZINC, 3/8" X 1 5/8"
HCZ824	BOLT, HEX HEAD, UNC, ZINC, 1/2" X 3"
HN2003	NUT, PLAIN, FULL, UNF, SPANNER SIZE 5/16"NO.6
HN2005	NUT, PLAIN, FULL, SPANNER SIZE 3/8", 3/16"
HN2007	NUT, PLAIN, FULL, 1/4"
HN2008	NUT, PLAIN, FULL, 5/16"
HN2009	NUT, PLAIN, FULL, 3/8"
HN2010	NUT, PLAIN, FULL, 7/16"
HN2011	NUT, PLAIN, FULL, 1/2"
HN2012	NUT, PLAIN, FULL, 9/16"
HN2013	NUT, PLAIN, FULL, 5/8"
HN2057	NUT, PLAIN, FULL, 1/4"
HN2058	NUT, PLAIN, FULL, 5/16"
HN2059	NUT, PLAIN, FULL, 3/8"
HNS412	SCREW, HEX HEAD, FULL THREAD, UNF, PLAIN, 1/4" X 1 1/2"
HNS505	SCREW, HEX HEAD, FULL THREAD, UNF, PLAIN, 5/16" X 5/8"
HNS507	SCREW, HEX HEAD, FULL THREAD, UNF, PLAIN, 5/16" X 7/8"
HU41A	NUT, BRAKE/CLUTCH/FUEL PIPE, FEMALE, STEEL, 1/2" UNF PIPE DIA 5/16"
HU503	SCREW, SET, HEX HEAD, UNF, 3/16" X 3/8"
HU504	SCREW, SET, HEX HEAD, UNF, 3/16" X 1/2"
HU505	SCREW, SET, HEX HEAD, UNF, 3/16" X 5/8"
HU506	SCREW, SET, HEX HEAD, UNF, 3/16" X 3/4"
HU507	

	SCREW, SET, HEX HEAD, UNF, 3/16" X 7/8"
HU508	SCREW, SET, HEX HEAD, UNF, 3/16" X 1"
HZS403	SCREW, HEX HEAD, FULL THREAD, UNF, ZINC, 1/4" X 3/8"
HZS404	SCREW, HEX HEAD, FULL THREAD, UNF, ZINC, 1/4" X 1/2"
HZS405	SCREW, HEX HEAD, FULL THREAD, UNF, ZINC, 1/4" X 5/8"
HZS406	SCREW, HEX HEAD, FULL THREAD, UNF, ZINC, 1/4" X 3/4"
HZS407	SCREW, HEX HEAD, FULL THREAD, UNF, ZINC, 1/4" X 7/8"
HZS408	SCREW, HEX HEAD, FULL THREAD, UNF, ZINC, 1/4" X 1"
HZS409	SCREW, HEX HEAD, FULL THREAD, UNF, ZINC, 1/4" X 1 1/8"
HZS410	SCREW, HEX HEAD, FULL THREAD, UNF, ZINC, 1/4" X 1 1/4"
HZS411	SCREW, HEX HEAD, FULL THREAD, UNF, ZINC, 1/4" X 1 3/8"
HZS412	SCREW, HEX HEAD, FULL THREAD, UNF, ZINC, 1/4" X 1 1/2"
HZS415	SCREW, HEX HEAD, FULL THREAD, UNF, ZINC, 1/4" X 1 7/8"
HZS416	SCREW, HEX HEAD, FULL THREAD, UNF, ZINC, 1/4" X 2"
HZS504	SCREW, HEX HEAD, FULL THREAD, UNF, ZINC, 5/16" X 1/2"
HZS505	SCREW, HEX HEAD, FULL THREAD, UNF, ZINC, 5/16" X 5/8"
HZS506	SCREW, HEX HEAD, FULL THREAD, UNF, ZINC, 5/16" X 3/4"
HZS507	SCREW, HEX HEAD, FULL THREAD, UNF, ZINC, 5/16" X 7/8"
HZS508	SCREW, HEX HEAD, FULL THREAD, UNF, ZINC, 5/16" X 1"
HZS509	SCREW, HEX HEAD, FULL THREAD, UNF, ZINC, 5/16" X 1 1/8"
HZS510	SCREW, HEX HEAD, FULL THREAD, UNF, ZINC, 5/16" X 1 1/4"
HZS511	SCREW, HEX HEAD, FULL THREAD, UNF, ZINC, 5/16" X 1 3/8"
HZS514	SCREW, HEX HEAD, FULL THREAD, UNF, ZINC, 5/16" X 1 3/4"
HZS603	SCREW, HEX HEAD, FULL THREAD, UNF, ZINC, 3/8" X 3/8"
HZS606	SCREW, HEX HEAD, FULL THREAD, UNF, ZINC, 3/8" X 3/4"
HZS607	SCREW, HEX HEAD, FULL THREAD, UNF, ZINC, 3/8" X 7/8"
HZS608	SCREW, HEX HEAD, FULL THREAD, UNF, ZINC, 3/8" X 1"
HZS610	SCREW, HEX HEAD, FULL THREAD, UNF, ZINC, 3/8" X 1 1/4"
HZS710	SCREW, HEX HEAD, FULL THREAD, UNF, ZINC, 7/16" X 1 1/4"
JN2108	NUT, PLAIN, HALF, 5/16"
JN2109	NUT, PLAIN, HALF, 3/8"
JN2110	NUT, PLAIN, HALF, 7/16"
JN2111	NUT, PLAIN, HALF, 1/2"
JN2112	NUT, PLAIN, HALF, 9/16"
JN2113	NUT, PLAIN, HALF, 5/8"
JN2157	NUT, PLAIN, HALF, 1/4"
JN2158	NUT, PLAIN, HALF, 5/16"
JN2159	NUT, PLAIN, HALF, 3/8"
LK21994	NUT, BRAKE/CLUTCH/FUEL PIPE, MALE, STEEL, 3/8" BSF PIPE DIA 3/16"
LN2209	NUT, CASTLE, HALF, 3/8"
LN2211	NUT, CASTLE, HALF, 1/2"
LN2212	NUT, CASTLE, HALF, 9/16"
LN30041	NIPPLE, GREASE, 90 DEGREE, 1/8" BSP
LNN208	NUT, LOCK, PLAIN, UNF, 1/2"
LNZ102	NUT, LOCK, ZINC, UNF, NO.6
LNZ103	NUT, LOCK, ZINC, UNF, NO.10
LNZ104	NUT, LOCK, ZINC, UNF, 1/4"
LNZ105	NUT, LOCK, ZINC, UNF, 5/16"
LNZ106	NUT, LOCK, ZINC, UNF, 3/8"
LNZ108	NUT, LOCK, ZINC, UNF, 1/2"
LNZ109	

	NUT, NYLOCK, ZINC, UNF, NO.10
LNZ204	NUT, NYLOCK, ZINC, UNF, 1/4"
LNZ205	NUT, NYLOCK, ZINC, UNF, 5/16"
LNZ206	NUT, NYLOCK, ZINC, UNF, 3/8"
LNZ207	NUT, NYLOCK, ZINC, UNF, 7/16"
LNZ208	NUT, NYLOCK, ZINC, UNF, 1/2"
LNZ405	NUT, LOCK, ZINC, UNF, 5/16"
LNZ406	NUT, LOCK, ZINC, UNF, 3/8"
LWN204	WASHER, SPRING, MEDIUM, PLAIN, 1/4"
LWN205	WASHER, SPRING, MEDIUM, PLAIN, 5/16"
LWN206	WASHER, SPRING, MEDIUM, PLAIN, 3/8"
LWN304	WASHER, SPRING, HEAVY, PLAIN, 1/4"
LWN305	WASHER, SPRING, HEAVY, PLAIN, 5/16"
LWN306	WASHER, SPRING, HEAVY, PLAIN, 3/8"
LWN307	WASHER, SPRING, HEAVY, PLAIN, 7/16"
LWN404	WASHER, SHAKEPROOF, INTERNAL TEETH, PLAIN, 1/4"
LWN405	WASHER, SHAKEPROOF, INTERNAL TEETH, PLAIN, 5/16"
LWZ202	WASHER, SPRING, MEDIUM, ZINC, NO.6
LWZ203	WASHER, SPRING, MEDIUM, ZINC, NO.10
LWZ204	WASHER, SPRING, MEDIUM, ZINC, 1/4"
LWZ205	WASHER, SPRING, MEDIUM, ZINC, 5/16"
LWZ206	WASHER, SPRING, MEDIUM, ZINC, 3/8"
LWZ207	WASHER, SPRING, MEDIUM, ZINC, 7/16"
LWZ208	WASHER, SPRING, MEDIUM, ZINC, 1/2"
LWZ212	WASHER, SPRING, MEDIUM, ZINC, 3/4"
LWZ303	WASHER, SPRING, HEAVY, ZINC, NO.10
LWZ304	WASHER, SPRING, HEAVY, ZINC, 1/4"
LWZ305	WASHER, SPRING, HEAVY, ZINC, 5/16"
LWZ306	WASHER, SPRING, HEAVY, ZINC, 3/8"
LWZ307	WASHER, SPRING, HEAVY, ZINC, 7/17"
LWZ308	WASHER, SPRING, HEAVY, ZINC, 1/2"
LWZ402	WASHER, SHAKEPROOF, INTERNAL TEETH, ZINC, NO.6
LWZ403	WASHER, SHAKEPROOF, INTERNAL TEETH, ZINC, NO.10
LWZ404	WASHER, SHAKEPROOF, INTERNAL TEETH, ZINC, 1/4"
LWZ405	WASHER, SHAKEPROOF, INTERNAL TEETH, ZINC, 5/16"
LWZ408	WASHER, SHAKEPROOF, INTERNAL TEETH, ZINC, 1/2"
LWZ505	WASHER, SHAKEPROOF, EXTERNAL TEETH, ZINC, 5/16"
LWZ510	WASHER, SHAKEPROOF, EXTERNAL TEETH, ZINC, 5/8"
LWZ607	WASHER, SHAKEPROOF, INTERNAL TEETH, ZINC, 7/16"
MNZ206	NUT, HEX,
NCS505	SCREW, 5/16"
NCS612	SCREW, 3/8"
ND606041	NUT, CASTLE, FULL, 3/8"
ND607041	NUT, CASTLE, FULL, 7/16"
ND608041	NUT, CASTLE, FULL, 1/2"
ND609041	NUT, CASTLE, FULL, 9/16"
ND610041	NUT, CASTLE, FULL, 5/8"
NH604041	NUT, HEX, UNF, 1/4"
NH605041	NUT, HEX, UNF, 5/16"
NH606041	NUT, HEX, UNF, 3/8"
NH608041	NUT, HEX, UNF, 1/2"

	NUT, PLAIN, FULL, 9/19" UNF X 7/8"
NH610041	NUT, PLAIN, FULL, 5/8" UNF X 15/16"
NH806011	NUT, LOCK, UNC, NO.6
NH910011	NUT, HEX, PLAIN, UNF, 3/16"
NJ2107	NUT, PLAIN, HALF, 1/4"
NL606041	NUT, CASTLE, HALF, 3/8" UNF X 9/16"
NL607041	NUT, CASTLE, HALF, 7/16" UNF X 5/8"
NL607041	NUT, CASTLE, HALF, 7/16"
NL608041	NUT, CASTLE, HALF, 1/2" UNF X 3/4"
NL609041	NUT, CASTLE, HALF, 9/16" UNF X 7/8"
NL610041	NUT, CASTLE, HALF, 5/8" UNF X 15/16"
NQ2707	NUT, 7/16" AF 1/4"
NQ2707	NUT, CAPTIVE, USE CAGE CN2 OR CN3, 1/4"
NQ2708	NUT, 5/8" AF 5/16"
NQ2708	NUT, CAPTIVE, 5/16"
NT504041	NUT, PLAIN, HALF, 1/4" UNC X 7/16"
NT505041	NUT, PLAIN, HALF, 5/16" UNC X 1/2"
NT506041	NUT, PLAIN, HALF, 3/8" UNC X 9/16"
NT604041	NUT, PLAIN, HALF, 1/4" UNF X 7/16"
NT605041	NUT, PLAIN, HALF, 5/16" UNF X 1/2"
NT606041	NUT, PLAIN, HALF, 3/8" UNF X 9/16"
NT607041	NUT, PLAIN, HALF, 7/16" UNF X 5/8"
NT608041	NUT, PLAIN, HALF, 1/2" UNF X 3/4"
NT609041	NUT, PLAIN, HALF, 9/19" UNF X 7/8"
NT610041	NUT, PLAIN, HALF, 5/8" UNF X 15/16"
PCR1007	CLIP, P-CLIP, IMPERIAL, FIXING HOLE, 7/32" CABLE DIA 5/8"
PCR1009	CLIP, P-CLIP, IMPERIAL, FIXING HOLE, 9/32" CABLE DIA 5/8"
PCR1011	CLIP, P-CLIP, IMPERIAL, FIXING HOLE, 11/32" CABLE DIA 5/8"
PCR1207	CLIP, P-CLIP, IMPERIAL, FIXING HOLE, 7/32" CABLE DIA 3/4"
PCR1209	CLIP, P-CLIP, IMPERIAL, FIXING HOLE, 9/32" CABLE DIA 3/4"
PCR1211	CLIP, P-CLIP, IMPERIAL, FIXING HOLE, 11/32" CABLE DIA 3/4"
PCR1407	CLIP, P-CLIP, IMPERIAL, FIXING HOLE, 7/32" CABLE DIA 7/8"
PCR1409	CLIP, P-CLIP, IMPERIAL, FIXING HOLE, 9/32" CABLE DIA 7/8"
PCR1411	CLIP, P-CLIP, IMPERIAL, FIXING HOLE, 11/32" CABLE DIA 7/8"
PCR1607	CLIP, P-CLIP, IMPERIAL, FIXING HOLE, 7/32" CABLE DIA 1"
PCR207	CLIP, P-CLIP, IMPERIAL, FIXING HOLE, 7/32" CABLE DIA 1/8"
PCR307	CLIP, P-CLIP, IMPERIAL, FIXING HOLE, 7/32" CABLE DIA 3/16"
PCR309	CLIP, P-CLIP, IMPERIAL, FIXING HOLE, 9/32" CABLE DIA 3/16"
PCR311	CLIP, P-CLIP, IMPERIAL, FIXING HOLE, 11/32" CABLE DIA 3/16"
PCR407	CLIP, P-CLIP, IMPERIAL, FIXING HOLE, 7/32" CABLE DIA 1/4"
PCR409	CLIP, P-CLIP, IMPERIAL, FIXING HOLE, 9/32" CABLE DIA 1/4"
PCR411	CLIP, P-CLIP, IMPERIAL, FIXING HOLE, 11/32" CABLE DIA 1/4"
PCR507	CLIP, P-CLIP, IMPERIAL, FIXING HOLE, 7/32" CABLE DIA 5/16"
PCR509	CLIP, P-CLIP, IMPERIAL, FIXING HOLE, 9/32" CABLE DIA 5/16"
PCR511	CLIP, P-CLIP, IMPERIAL, FIXING HOLE, 11/32" CABLE DIA 5/16"
PCR607	CLIP, P-CLIP, IMPERIAL, FIXING HOLE, 7/32" CABLE DIA 3/8"
PCR609	CLIP, P-CLIP, IMPERIAL, FIXING HOLE, 9/32" CABLE DIA 3/8"
PCR611	CLIP, P-CLIP, IMPERIAL, FIXING HOLE, 11/32" CABLE DIA 3/8"
PCR707	CLIP, P-CLIP, IMPERIAL, FIXING HOLE, 7/32" CABLE DIA 7/16"
PCR709	CLIP, P-CLIP, IMPERIAL, FIXING HOLE, 9/32" CABLE DIA 7/16"
PCR711	

	CLIP, P-CLIP, IMPERIAL, FIXING HOLE, 11/32" CABLE DIA 7/16"
PCR807	CLIP, P-CLIP, IMPERIAL, FIXING HOLE, 7/32" CABLE DIA 1/2"
PCR809	CLIP, P-CLIP, IMPERIAL, FIXING HOLE, 9/32" CABLE DIA 1/2"
PCR811	CLIP, P-CLIP, IMPERIAL, FIXING HOLE, 1/32" CABLE DIA 1/2"
PCR813	CLIP, P-CLIP, IMPERIAL, FIXING HOLE, 13/32" CABLE DIA 1/2"
PFS103S	NUT, SPIRE, 3/32"
PFS104S	NUT, SPIRE, 1/8"
PFS105S	NUT, SPIRE, 5/32"
PFS106S	NUT, SPIRE, 3/16"
PJ8504	PIN, CLEVIS, LENGTH IS FROM UNDER HEAD TO END, 3/16" X 3/8"
PMP208	SCREW, CROSS HEAD, PAN HEAD, CHROME, UNF, NO.6 X 1/2"
PMP214	SCREW, CROSS HEAD, PAN HEAD, CHROME, UNF, NO.6 X 7/8"
PMP308	SCREW, CROSS HEAD, PAN HEAD, CHROME, UNF, NO.10 X 1/2"
PMP312	SCREW, CROSS HEAD, PAN HEAD, CHROME, UNF, NO.10 X 3/4"
PMP412	SCREW, CROSS HEAD, PAN HEAD, CHROME, UNF, 1/4" X 3/4"
PMP516	SCREW, CROSS HEAD, PAN HEAD, CHROME, UNF, 5/16" X 1"
PMZ204	SCREW, CROSS HEAD, PAN HEAD, ZINC, UNF, NO.6 X 1/4"
PMZ206	SCREW, CROSS HEAD, PAN HEAD, ZINC, UNF, NO.6 X 3/8"
PMZ208	SCREW, CROSS HEAD, PAN HEAD, ZINC, UNF, NO.6 X 1/2"
PMZ210	SCREW, CROSS HEAD, PAN HEAD, ZINC, UNF, NO.6 X 5/8"
PMZ216	SCREW, CROSS HEAD, PAN HEAD, ZINC, UNF, NO.6 X 1"
PMZ304	SCREW, CROSS HEAD, PAN HEAD, ZINC, UNF, NO.10 X 1/4"
PMZ305	SCREW, CROSS HEAD, PAN HEAD, ZINC, UNF, NO.10 X 5/16"
PMZ306	SCREW, CROSS HEAD, PAN HEAD, ZINC, UNF, NO.10 X 3/8"
PMZ307	SCREW, CROSS HEAD, PAN HEAD, ZINC, UNF, NO.10 X 7/16"
PMZ308	SCREW, CROSS HEAD, PAN HEAD, ZINC, UNF, NO.10 X 1/2"
PMZ310	SCREW, CROSS HEAD, PAN HEAD, ZINC, UNF, NO.10 X 5/8"
PMZ312	SCREW, CROSS HEAD, PAN HEAD, ZINC, UNF, NO.10 X 3/4"
PMZ314	SCREW, CROSS HEAD, PAN HEAD, ZINC, UNF, NO.10 X 7/8"
PMZ316	SCREW, CROSS HEAD, PAN HEAD, ZINC, UNF, NO.10 X 1"
PMZ320	SCREW, CROSS HEAD, PAN HEAD, ZINC, UNF, NO.10 X 1 1/4"
PMZ406	SCREW, CROSS HEAD, PAN HEAD, ZINC, UNF, 1/4" X 3/8"
PMZ408	SCREW, CROSS HEAD, PAN HEAD, ZINC, UNF, 1/4" X 1/2"
PMZ410	SCREW, CROSS HEAD, PAN HEAD, ZINC, UNF, 1/4" X 5/8"
PMZ416	SCREW, CROSS HEAD, PAN HEAD, ZINC, UNF, 1/4" X 1"
PMZ810	SCREW, CROSS HEAD, PAN HEAD, ZINC, UNF, 1/2" X 5/8"
PPZ308	SCREW, CROSS HEAD, PAN HEAD, POINTED, ZINC, UNF, NO.10 X 1/2"
PTZ804	SCREW, CROSS HEAD, PAN HEAD, ZINC, UNF, NO.8 X 1/2"
PWN105	WASHER, FLAT, STANDARD, PLAIN, 5/16"
PWN106	WASHER, FLAT, STANDARD, PLAIN, 3/8"
PWP204	WASHER, FLAT, LARGE OD, CHROME, 1/4"
PWZ102	WASHER, FLAT, STANDARD, ZINC, NO.6
PWZ103	WASHER, FLAT, STANDARD, ZINC, NO.10
PWZ104	WASHER, FLAT, STANDARD, ZINC, 1/4"
PWZ105	WASHER, FLAT, STANDARD, ZINC, 5/16"
PWZ106	WASHER, FLAT, STANDARD, ZINC, 3/8"
PWZ107	WASHER, FLAT, STANDARD, ZINC, 7/16"
PWZ108	WASHER, FLAT, STANDARD, ZINC, 1"
PWZ110	WASHER, PLAIN, REPAIR, 5/8"
PWZ202	WASHER, FLAT, LARGE OD, ZINC, NO.6
PWZ203	

	WASHER, FLAT, LARGE OD, ZINC, NO.10
PWZ204	WASHER, FLAT, LARGE OD, ZINC, 1/4"
PWZ205	WASHER, FLAT, LARGE OD, ZINC, 5/16"
PWZ206	WASHER, FLAT, LARGE OD, ZINC, 3/8"
PWZ207	WASHER, FLAT, LARGE OD, ZINC, 7/16"
PWZ208	WASHER, FLAT, LARGE OD, ZINC, 1"
PWZ305	WASHER, FLAT, LARGE OD, ZINC, 5/16" X 7/8"
PWZ306	WASHER, FLAT, LARGE OD, ZINC, 3/8" X 1"
PWZ307	WASHER, FLAT, LARGE OD, ZINC, 7/16" X 1 1/8"
RA607096	RIVET, POP, OPEN END, 2.9mm x 5mm
RA608126	RIVET, POP, OPEN END, 1/8" x 3/16"
RA608176	RIVET, POP, OPEN END, 1/8" x 1/4"
RA608236	RIVET, POP, OPEN END, 1/8" x 5/16"
RA608253	RIVET, POP, OPEN END, 1/8" x 3/8"
RFN207	GROMMET, BLANKING, 7/16
RFN210	GROMMET, BLANKING, 5/8"
RFN303	GROMMET 5/8"OD x 3/16"ID
RFN403	GROMMET 5/8"OD X 3/16"ID
RFR503	GROMMET 1"OD X 3/16"
RMP212	SCREW, CSK, RAISED HEAD, CHROME, UNF, NO.6 X 3/4"
RMP214	SCREW, CSK, RAISED HEAD, CHROME, UNF, NO.6 X 7/8"
RMP306	SCREW, CSK, RAISED HEAD, CHROME, UNF, NO.10 X 3/8"
RMP308	SCREW, CSK, RAISED HEAD, CHROME, UNF, NO.10 X 1/2"
RMP310	SCREW, CSK, RAISED HEAD, CHROME, UNF, NO.10 X 3/8"
RMP312	SCREW, CSK, RAISED HEAD, CHROME, UNF, NO.10 X 3/4"
RMP316	SCREW, CSK, RAISED HEAD, CHROME, UNF, NO.10 X 1"
RMP320	SCREW, CSK, RAISED HEAD, CHROME, UNF, NO.10 X 1 1/4"
RMZ204	SCREW, CSK, RAISED HEAD, ZINC, UNF, NO.10 X 1/4"
RMZ308	SCREW, CSK, RAISED HEAD, ZINC, UNF, NO.10 X 1/2"
RMZ310	SCREW, CSK, RAISED HEAD, ZINC, UNF, NO.10 X 5/8"
RU608123	RIVET, POP, CLOSED END, 1/8" x 3/8"
RU608313	RIVET, POP, CLOSED END, 1/8" x 1/2"
RU612123	RIVET, POP, CLOSED END, 3/16" x 5/16"
SE604041	SCREW, PAN, CROSS, ZINC, UNF, 1/4" X 1/2"
SE604051	SCREW, PAN, CROSS, ZINC, UNF, 1/4" X 5/8"
SE604061	SCREW, PAN, CROSS, ZINC, UNF, 1/4" X 3/4"
SE604071	SCREW, PAN, CROSS, ZINC, UNF, 1/4" X 7/8"
SE604081	SCREW, PAN, CROSS, ZINC, UNF, 1/4" X 1"
SE604121	SCREW, PAN, CROSS, ZINC, UNF, 1/4" X 1 1/2"
SE605061	SCREW, PAN, CROSS, ZINC, UNF, 1/4" X 3/4"
SE605081	SCREW, PAN, CROSS, ZINC, UNF, 1/4" X 1"
SF604041	SCREW, PAN, CSK, ZINC, UNF, 1/4" X 1/2"
SF604051	SCREW, PAN, CSK, ZINC, UNF, 1/4" X 5/8"
SF604061	SCREW, PAN, CSK, ZINC, UNF, 1/4" X 3/4"
SF604071	SCREW, PAN, CSK, ZINC, UNF, 1/4" X 7/8"
SF604081	SCREW, PAN, CSK, ZINC, UNF, 1/4" X 1"
SF604083	SCREW, PAN, CSK, ZINC, UNF,
SF604101	SCREW, PAN, CSK, ZINC, UNF,
SF604121	SCREW, PAN, CSK, ZINC, UNF, 1/4" X 1 1/2"
SF605061	SCREW, PAN, CSK, ZINC, UNF, 5/16" X 3/4"
SF605081	SCREW, PAN, CSK, ZINC, UNF, 1/4" X 1"

	SCREW, PAN, CSK, ZINC, UNF, 5/16" X 1"
SG604083	SCREW, RSD HD, CSK, CHROME, UNF, 1/4" X 1"
SG604103	SCREW, RSD HD, CSK, CHROME, UNF, 1/4" X 1 1/4"
SG605061	SCREW, RSD HD, CSK, ZINC, UNF, 5/16" X 3/4"
SH504031	SCREW, SET, HEX HEAD, UNC, 1/4" X 3/8"
SH504041	SCREW, SET, HEX HEAD, UNC, 1/4" X 1/2"
SH504051	SCREW, SET, HEX HEAD, UNC, 1/4" X 5/8"
SH504061	SCREW, SET, HEX HEAD, UNC, 1/4" X 3/4"
SH504071	SCREW, SET, HEX HEAD, UNC, 1/4" X 7/8"
SH504081	SCREW, SET, HEX HEAD, UNC, 1/4" X 1"
SH504091	SCREW, SET, HEX HEAD, UNC, 1/4" X 1 1/8"
SH504101	SCREW, SET, HEX HEAD, UNC, 1/4" X 1 1/4"
SH504111	SCREW, SET, HEX HEAD, UNC, 1/4" X 1 3/8"
SH504121	SCREW, SET, HEX HEAD, UNC, 1/4" X 1 1/2"
SH504141	SCREW, SET, HEX HEAD, UNC, 1/4" X 1 3/4"
SH504181	SCREW, SET, HEX HEAD, UNC, 1/4" X 2 1/4"
SH505031	SCREW, HEX, UNC, 5/16" X 3/8"
SH505041	SCREW, HEX, UNC, 5/16" X 1/2"
SH505051	SCREW, HEX, UNC, 5/16" X 5/8"
SH505061	SCREW, HEX, UNC, 5/16" X 3/4"
SH505071	SCREW, HEX, UNC, 5/16" X 7/8"
SH505081	SCREW, HEX, UNC, 5/16" X 1"
SH505091	SCREW, HEX, UNC, 5/16" X 1 1/8"
SH505101	SCREW, HEX, UNC, 5/16" X 1 1/4"
SH505111	SCREW, HEX, UNC, 5/16" X 1 3/8"
SH505121	SCREW, HEX, UNC, 5/16" X 1 1/2"
SH505141	SCREW, HEX, UNC, 5/16" X 1 3/4"
SH505201	SCREW, HEX, UNC, 5/16" X 2 1/2"
SH506041	SCREW, HEX, UNC, 3/8" X 1/2"
SH506061	SCREW, HEX, UNC, 3/8" X 3/4"
SH506071	SCREW, HEX, UNC, 3/8" X 7/8"
SH506081	SCREW, HEX, UNC, 3/8" X 1"
SH506091	SCREW, HEX, UNC, 3/8" X 1 1/8"
SH506101	SCREW, HEX, UNC, 3/8" X 1 1/4"
SH506111	SCREW, HEX, UNC, 3/8" X 1 3/8"
SH506121	SCREW, HEX, UNC, 3/8" X 1 1/2"
SH506161	SCREW, HEX, UNC, 3/8" X 2"
SH506241	SCREW, HEX, UNC, 3/8" X 3"
SH604031	SCREW, SET, HEX HEAD, UNF, 1/4" X 3/8"
SH604041	SCREW, SET, HEX HEAD, UNF, 1/4" X 1/2"
SH604051	SCREW, SET, HEX HEAD, UNF, 1/4" X 5/8"
SH604061	SCREW, SET, HEX HEAD, UNF, 1/4" X 3/4"
SH604071	SCREW, SET, HEX HEAD, UNF, 1/4" X 7/8"
SH604081	SCREW, SET, HEX HEAD, UNF, 1/4" X 1"
SH604091	SCREW, SET, HEX HEAD, UNF, 1/4" X 1 1/8"
SH604101	SCREW, SET, HEX HEAD, UNF, 1/4" X 1 1/4"
SH604111	SCREW, SET, HEX HEAD, UNF, 1/4" X 1 3/8"
SH604121	SCREW, SET, HEX HEAD, UNF, 1/4" X 1 1/2"
SH604141	SCREW, SET, HEX HEAD, UNF, 1/4" X 1 3/4"
SH604161	SCREW, SET, HEX HEAD, UNF, 1/4" X 2
SH605031	

	SCREW, SET, HEX HEAD, UNF, 5/16" X 3/8"
SH605041	SCREW, SET, HEX HEAD, UNF, 5/16" X 1/2"
SH605051	SCREW, SET, HEX HEAD, UNF, 5/16" X 5/8"
SH605061	SCREW, SET, HEX HEAD, UNF, 5/16" X 3/4"
SH605071	SCREW, SET, HEX HEAD, UNF, 5/16" X 7/8"
SH605081	SCREW, SET, HEX HEAD, UNF, 5/16" X 1"
SH605091	SCREW, SET, HEX HEAD, UNF, 5/16" X 1 1/8"
SH605101	SCREW, SET, HEX HEAD, UNF, 5/16" X 1 1/4"
SH605111	SCREW, SET, HEX HEAD, UNF, 5/16" X 1 3/8"
SH605121	SCREW, SET, HEX HEAD, UNF, 5/16" X 1 1/2"
SH605141	SCREW, SET, HEX HEAD, UNF, 5/16" X 1 3/4"
SH605151	SCREW, SET, HEX HEAD, UNF, 5/16" X 1 7/8"
SH605161	SCREW, SET, HEX HEAD, UNF, 5/16" X 2"
SH605181	SCREW, SET, HEX HEAD, UNF, 5/16" X 2 1/4"
SH605201	SCREW, SET, HEX HEAD, UNF, 5/16" X 2 1/2"
SH605221	SCREW, SET, HEX HEAD, UNF, 5/16" X 2 3/4"
SH605241	SCREW, SET, HEX HEAD, UNF, 5/16" X 3"
SH606031	SCREW, SET, HEX HEAD, UNF, 3/8" X 3/8"
SH606041	SCREW, SET, HEX HEAD, UNF, 3/8" X 1/2"
SH606051	SCREW, SET, HEX HEAD, UNF, 3/8" X 5/8"
SH606061	SCREW, SET, HEX HEAD, UNF, 3/8" X 3/4"
SH606071	SCREW, SET, HEX HEAD, UNF, 3/8" X 7/8"
SH606081	SCREW, SET, HEX HEAD, UNF, 3/8" X 1"
SH606091	SCREW, SET, HEX HEAD, UNF, 3/8" X 1 1/8"
SH606101	SCREW, SET, HEX HEAD, UNF, 3/8" X 1 1/4"
SH606111	SCREW, SET, HEX HEAD, UNF, 3/8" X 1 3/8"
SH606121	SCREW, SET, HEX HEAD, UNF, 3/8" X 1 1/2"
SH606141	SCREW, SET, HEX HEAD, UNF, 3/8" X 1 3/4"
SH606161	SCREW, SET, HEX HEAD, UNF, 3/8" X 2"
SH606181	SCREW, SET, HEX HEAD, UNF, 3/8" X 2 1/4"
SH606201	SCREW, SET, HEX HEAD, UNF, 3/8" X 2 1/2"
SH607051	SCREW, SET, HEX HEAD, UNF, 7/16" X 5/8"
SH607061	SCREW, SET, HEX HEAD, UNF, 7/16" X 3/4"
SH607071	SCREW, SET, HEX HEAD, UNF, 7/16" X 7/8"
SH607081	SCREW, SET, HEX HEAD, UNF, 7/16" X 1"
SH607091	SCREW, SET, HEX HEAD, UNF, 7/16" X 1 1/8"
SH607101	SCREW, SET, HEX HEAD, UNF, 7/16" X 1 1/4"
SH607111	SCREW, SET, HEX HEAD, UNF, 7/16" X 1 3/8"
SH607121	SCREW, SET, HEX HEAD, UNF, 7/16" X 1 1/2"
SH607141	SCREW, SET, HEX HEAD, UNF, 7/16" X 1 3/4"
SH607161	SCREW, SET, HEX HEAD, UNF, 7/16" X 2"
SH607181	SCREW, SET, HEX HEAD, UNF, 7/16" X 2 1/4"
SH608041	SCREW, SET, HEX HEAD, UNF, 1/2" X 1/2" S
SH608051	SCREW, SET, HEX HEAD, UNF, 1/2" X 5/8" S
SH608081	SCREW, SET, HEX HEAD, UNF, 1/2" X 1" SH6
SH608121	SCREW, SET, HEX HEAD, UNF, 1/2" X 1 1/2"
SH608141	SCREW, SET, HEX HEAD, UNF, 1/2" X 1 3/4"
SH608201	SCREW, SET, HEX HEAD, UNF, 1/2" X 2 1/2"
SU2A	NUT, BRAKE/CLUTCH/FUEL PIPE, FEMALE, STEEL, 10mm x 1mm PIPE DIA 3/16"
SU4A	NUT, BRAKE/CLUTCH/FUEL PIPE, FEMALE, STEEL, 7/16" UNF PIPE DIA 1/4"
SH604001	

	STUD, UNF ONE END UNC THE OTHER, 1/4" X 1"
TE504131	STUD, UNF ONE END UNC THE OTHER, 1/4" X 1 5/8"
TE505091	STUD, UNF ONE END UNC THE OTHER, 5/16" X 1 1/8"
TE505111	STUD, UNF ONE END UNC THE OTHER, 5/16" X 1 3/8"
TE505121	STUD, UNF ONE END UNC THE OTHER, 5/16" X 1 1/2"
TE505131	STUD, UNF ONE END UNC THE OTHER, 5/16" X 1 5/8"
TE505141	STUD, UNF ONE END UNC THE OTHER, 5/16" X 1 3/4"
TE505151	STUD, UNF ONE END UNC THE OTHER, 5/16" X 1 7/8"
TE505161	STUD, UNF ONE END UNC THE OTHER, 5/16" X 2"
TE505181	STUD, UNF ONE END UNC THE OTHER, 5/16" X 2 1/4"
TE505201	STUD, UNF ONE END UNC THE OTHER, 5/16" X 2 1/2"
TE505221	STUD, UNF ONE END UNC THE OTHER, 5/16" X 2 3/4"
TE505241	STUD, UNF ONE END UNC THE OTHER, 5/16" X 3"
TE505261	STUD, UNF ONE END UNC THE OTHER, 5/16" X 3 1/4"
TE505271	STUD, UNF ONE END UNC THE OTHER, 5/16" X 3 3/8"
TE505281	STUD, UNF ONE END UNC THE OTHER, 5/16" X 3 1/2"
TE505341	STUD, UNF ONE END UNC THE OTHER, 5/16" X 4 1/4"
TE506101	STUD, UNF ONE END UNC THE OTHER, 3/8" X 1 5/16"
TE506131	STUD, UNF ONE END UNC THE OTHER, 3/8" X 1 5/8"
TE506141	STUD, UNF ONE END UNC THE OTHER, 3/8" X 1 3/4"
TE506161	STUD, UNF ONE END UNC THE OTHER, 3/8" X 2"
TE506201	STUD, UNF ONE END UNC THE OTHER, 3/8" X 2 1/2"
TE506361	STUD, UNF ONE END UNC THE OTHER, 3/8" X 3 1/2"
TE604081	STUD, UNF BOTH ENDS, 1/4" X 1"
TE604091	STUD, UNF BOTH ENDS, 1/4" X 1 1/8"
TE604101	STUD, UNF BOTH ENDS, 1/4" X 1 1/4"
TE605101	STUD, UNF BOTH ENDS, 5/16" X 1 1/4"
TE605111	STUD, UNF BOTH ENDS, 5/16" X 1 3/8"
TE605121	STUD, UNF BOTH ENDS, 5/16" X 1 1/2"
TE605131	STUD, UNF BOTH ENDS, 5/16" X 1 5/8"
TE605141	STUD, UNF BOTH ENDS, 5/16" X 1 3/4"
TE605151	STUD, UNF BOTH ENDS, 5/16" X 1 7/8"
TE605181	STUD, UNF BOTH ENDS, 5/16" X 2 1/4"
TE605201	STUD, UNF BOTH ENDS, 5/16" X 2 1/2"
TE605221	STUD, UNF BOTH ENDS, 5/16" X 2 3/4"
TE605251	STUD, UNF BOTH ENDS, 5/16" X 3 1/8"
TE605291	STUD, UNF BOTH ENDS, 5/16" X 3 5/8"
TE606101	STUD, UNF BOTH ENDS, 3/8" X 1 1/4"
TE606111	STUD, UNF BOTH ENDS, 3/8" X 1 3/8"
TE606121	STUD, UNF BOTH ENDS, 3/8" X 1 1/2"
TE606141	STUD, UNF BOTH ENDS, 3/8" X 1 3/4"
TE606151	STUD, UNF BOTH ENDS, 3/8" X 1 7/8"
TM110051	NUT, BRAKE/CLUTCH/FUEL PIPE, MALE, STEEL, 10mm x 1mm PIPE DIA 3/16"
TM606031	NUT, BRAKE/CLUTCH/FUEL PIPE, MALE, STEEL, 3/8" UNF PIPE DIA 3/16"
TN3208	NUT, NYLOC, HALF, 5/16"
TN3209	NUT, NYLOC, HALF, 3/8"
TN3210	NUT, NYLOC, HALF, 7/16"
TN3211	NUT, NYLOC, HALF, 1/2"
TN3212	NUT, NYLOC, HALF, 9/16" UNF
TN3212	NUT, NYLOC, HALF, 9/16"
TN3212	

	NUT, NYLOC, HALF, 5/8"
TN606031	NUT, BRAKE/CLUTCH/FUEL PIPE, FEMALE, STEEL, 3/8" UNF PIPE DIA 3/16"
UHN400	NIPPLE, GREASE, STRAIGHT, SHORT, 1/8" BSP
UHN445	NIPPLE, GREASE, 45 DEGREE, 1/8" BSP
WE600041	WASHER, SHAKEPROOF, EXTERNAL STAR, 1/4"
WE600051	WASHER, SHAKEPROOF, EXTERNAL STAR, 5/16"
WE600061	WASHER, SHAKEPROOF, EXTERNAL STAR, 3/8"
WE600071	WASHER, SHAKEPROOF, EXTERNAL STAR, 7/16"
WE600081	WASHER, SHAKEPROOF, EXTERNAL STAR, 1/2"
WE600101	WASHER, SHAKEPROOF, EXTERNAL STAR, 5/8"
WE702101	WASHER, SHAKEPROOF, EXTERNAL STAR, 3/16"
WE704061	WASHER, SHAKEPROOF, EXTERNAL STAR, No. 6
WF505	WASHER, SEALING, FIBRE, 3/16"
WF600041	WASHER, SHAKEPROOF, INTERNAL STAR, 1/4"
WF600051	WASHER, SHAKEPROOF, INTERNAL STAR, 5/16"
WF600061	WASHER, SHAKEPROOF, INTERNAL STAR, 3/8"
WF600071	WASHER, SHAKEPROOF, INTERNAL STAR, 7/16"
WF600081	WASHER, SHAKEPROOF, INTERNAL STAR, 1/2"
WF600091	WASHER, SHAKEPROOF, INTERNAL STAR, 9/16"
WF600101	WASHER, SHAKEPROOF, INTERNAL STAR, 5/8"
WF702101	WASHER, SHAKEPROOF, INTERNAL STAR, 3/16"
WF704061	WASHER, SHAKEPROOF, INTERNAL STAR, No. 6
WL700061	WASHER, SPRING, SINGLE COIL, No.6
WL700081	WASHER, SPRING, SINGLE COIL, No.8
WL700101	WASHER, SPRING, SINGLE COIL, 3/16"
WM69	WASHER, PLAIN, REPAIR, 7/16"
WP105	WASHER, PLAIN, REPAIR, 5/16"
WP12	WASHER, PLAIN, REPAIR, 9/16"
WP120	WASHER, PLAIN, REPAIR, 1/4"
WP130	WASHER, PLAIN, REPAIR, 3/8"
WP3	WASHER, PLAIN, REPAIR, NO.6
WP4	WASHER, PLAIN, REPAIR, NO.8
WP5	WASHER, PLAIN, REPAIR, 3/16"
YN2905	NUT, NYLOCK, FULL, 3/16"
YN2907	NUT, NYLOCK, FULL, 1/4"
YN2908	NUT, NYLOCK, FULL, 5/16"
YN2909	NUT, NYLOCK, FULL, 3/8"
YN2910	NUT, NYLOCK, FULL, 7/16"
YN2911	NUT, NYLOCK, FULL, 1/2"
YN2912	NUT, NYLOCK, FULL, 9/16"
YN2913	NUT, NYLOCK, FULL, 5/8"
ZCS505	SCREW, SET, HIGH TENSILE, UNC, 5/16" X 5/8"
ZCS507	SCREW, SET, HIGH TENSILE, UNC, 5/16" X 7/8"
ZCS508	SCREW, SET, HIGH TENSILE, UNC, 5/16" X 1"
ZCS610	SCREW, SET, HIGH TENSILE, UNC, 3/8" X 1 1/4"

Description to Part Number

BLS106	BALL, STEEL, 3/16"
BLS108	BALL, STEEL, 1/4"
BLS110	BALL, STEEL, 5/16"

BLS112	BALL, STEEL, 3/8"
BLS28	BALL, STEEL, 7/16"
C5192A	BOLT, BANJO, UNF3/8"
BH504091	BOLT, HEX HEAD, UNC, 1/4" X 1 1/8"
BH504111	BOLT, HEX HEAD, UNC, 1/4" X 1 3/8"
BH504121	BOLT, HEX HEAD, UNC, 1/4" X 1 1/2"
BH504141	BOLT, HEX HEAD, UNC, 1/4" X 1 3/4"
BH504161	BOLT, HEX HEAD, UNC, 1/4" X 2"
BH504181	BOLT, HEX HEAD, UNC, 1/4" X 2 1/4"
BH504201	BOLT, HEX HEAD, UNC, 1/4" X 2 1/2"
HCZ518	BOLT, HEX HEAD, UNC, ZINC, 5/16" X 2 1/4"
HCZ608	BOLT, HEX HEAD, UNC, ZINC, 3/8" X 1"
HCZ613	BOLT, HEX HEAD, UNC, ZINC, 3/8" X 1 5/8"
HCZ824	BOLT, HEX HEAD, UNC, ZINC, 1/2" X 3"
BH604081	BOLT, HEX HEAD, UNF, 1/4" X 1"
BH604091	BOLT, HEX HEAD, UNF, 1/4" X 1 1/8"
BH604101	BOLT, HEX HEAD, UNF, 1/4" X 1 1/4"
BH604111	BOLT, HEX HEAD, UNF, 1/4" X 1 3/8"
BH604121	BOLT, HEX HEAD, UNF, 1/4" X 1 1/2"
BH604141	BOLT, HEX HEAD, UNF, 1/4" X 1 3/4"
BH604161	BOLT, HEX HEAD, UNF, 1/4" X 2"
BH604181	BOLT, HEX HEAD, UNF, 1/4" X 2 1/4"
BH604201	BOLT, HEX HEAD, UNF, 1/4" X 2 1/2"
BH604221	BOLT, HEX HEAD, UNF, 1/4" X 2 3/4"
BH604241	BOLT, HEX HEAD, UNF, 1/4" X 3"
BH605091	BOLT, HEX HEAD, UNF, 5/16" X 1 1/8"
BH605101	BOLT, HEX HEAD, UNF, 5/16" X 1 1/4"
BH605111	BOLT, HEX HEAD, UNF, 5/16" X 1 3/8"
BH605121	BOLT, HEX HEAD, UNF, 5/16" X 1 1/2"
BH605141	BOLT, HEX HEAD, UNF, 5/16" X 1 3/4"
BH605151	BOLT, HEX HEAD, UNF, 5/16" X 1 7/8"
BH605161	BOLT, HEX HEAD, UNF, 5/16" X 2"
BH605181	BOLT, HEX HEAD, UNF, 5/16" X 2 1/4"
BH605201	BOLT, HEX HEAD, UNF, 5/16" X 2 1/2"
BH605221	BOLT, HEX HEAD, UNF, 5/16" X 2 3/4"
BH605241	BOLT, HEX HEAD, UNF, 5/16" X 3"
BH605401	BOLT, HEX HEAD, UNF, 5/16" X 5"
BH606081	BOLT, HEX HEAD, UNF, 3/8" X 1"
BH606091	BOLT, HEX HEAD, UNF, 3/8" X 1 1/8"
BH606101	BOLT, HEX HEAD, UNF, 3/8" X 1 1/4"
BH606111	BOLT, HEX HEAD, UNF, 3/8" X 1 3/8"
BH606121	BOLT, HEX HEAD, UNF, 3/8" X 1 1/2"
BH606141	BOLT, HEX HEAD, UNF, 3/8" X 1 3/4"
BH606161	BOLT, HEX HEAD, UNF, 3/8" X 2"
BH606181	BOLT, HEX HEAD, UNF, 3/8" X 2 1/4"
BH606201	BOLT, HEX HEAD, UNF, 3/8" X 2 1/2"
BH606221	BOLT, HEX HEAD, UNF, 3/8" X 2 3/4"
BH606241	BOLT, HEX HEAD, UNF, 3/8" X 3"
BH606261	BOLT, HEX HEAD, UNF, 3/8" X 3 1/4"
BH606281	BOLT, HEX HEAD, UNF, 3/8" X 3 1/2"
BH606301	

	BOLT, HEX HEAD, UNF, 3/8" X 3 3/4"
BH606321	BOLT, HEX HEAD, UNF, 3/8" X 4"
BH607121	BOLT, HEX HEAD, UNF, 7/16" X 1 1/2"
BH607141	BOLT, HEX HEAD, UNF, 7/16" X 1 3/4"
BH607161	BOLT, HEX HEAD, UNF, 7/16" X 2"
BH607181	BOLT, HEX HEAD, UNF, 7/16" X 2 1/4"
BH607201	BOLT, HEX HEAD, UNF, 7/16" X 2 1/2"
BH607241	BOLT, HEX HEAD, UNF, 7/16" X 3"
BH608141	BOLT, HEX HEAD, UNF, 1/2" X 1 3/4"
BH608161	BOLT, HEX HEAD, UNF, 1/2" X 2"
BH608181	BOLT, HEX HEAD, UNF, 1/2" X 2 1/4"
BH608201	BOLT, HEX HEAD, UNF, 1/2" X 2 1/2"
BH608241	BOLT, HEX HEAD, UNF, 1/2" X 3"
HBN412	BOLT, HEX HEAD, UNF, PLAIN, 1/4" X 1 1/2"
HBZ408	BOLT, HEX HEAD, UNF, ZINC, 1/4" X 1"
HBZ418	BOLT, HEX HEAD, UNF, ZINC, 1/4" X 2 1/4"
HBZ422	BOLT, HEX HEAD, UNF, ZINC, 1/4" X 2 3/4"
HBZ510	BOLT, HEX HEAD, UNF, ZINC, 5/16" X 1 1/4"
HBZ511	BOLT, HEX HEAD, UNF, ZINC, 5/16" X 1 3/8"
HBZ512	BOLT, HEX HEAD, UNF, ZINC, 5/16" X 1 1/2"
HBZ513	BOLT, HEX HEAD, UNF, ZINC, 5/16" X 1 5/8"
HBZ514	BOLT, HEX HEAD, UNF, ZINC, 5/16" X 1 3/4"
HBZ515	BOLT, HEX HEAD, UNF, ZINC, 5/16" X 1 7/8"
HBZ516	BOLT, HEX HEAD, UNF, ZINC, 5/16" X 2"
HBZ518	BOLT, HEX HEAD, UNF, ZINC, 5/16" X 2 1/4"
HBZ520	BOLT, HEX HEAD, UNF, ZINC, 5/16" X 2 1/2"
HBZ522	BOLT, HEX HEAD, UNF, ZINC, 5/16" X 2 3/4"
HBZ524	BOLT, HEX HEAD, UNF, ZINC, 5/16" X 3"
HBZ528	BOLT, HEX HEAD, UNF, ZINC, 5/16" X 3 1/2"
HBZ612	BOLT, HEX HEAD, UNF, ZINC, 3/8" X 1 1/2"
HBZ614	BOLT, HEX HEAD, UNF, ZINC, 3/8" X 1 3/4"
HBZ616	BOLT, HEX HEAD, UNF, ZINC, 3/8" X 2"
HBZ632	BOLT, HEX HEAD, UNF, ZINC, 3/8" X 4"
HBZ726	BOLT, HEX HEAD, UNF, ZINC, 7/16" X 3 1/4"
HBZ732	BOLT, HEX HEAD, UNF, ZINC, 7/16" X 4"
BH506081	BOLT, HEX, UNC, 3/8" X 1"
BH506111	BOLT, HEX, UNC, 3/8" X 1 3/8"
BH506121	BOLT, HEX, UNC, 3/8" X 1 1/2"
BH506141	BOLT, HEX, UNC, 3/8" X 1 3/4"
BH506161	BOLT, HEX, UNC, 3/8" X 2"
BH506181	BOLT, HEX, UNC, 3/8" X 2 1/4"
BH506201	BOLT, HEX, UNC, 3/8" X 2 1/2"
BH506241	BOLT, HEX, UNC, 3/8" X 3"
BH505101	BOLT, HEX, UNC, 5/16" X 1 1/4"
BH505111	BOLT, HEX, UNC, 5/16" X 1 3/8"
BH505121	BOLT, HEX, UNC, 5/16" X 1 1/2"
BH505141	BOLT, HEX, UNC, 5/16" X 1 3/4"
BH505161	BOLT, HEX, UNC, 5/16" X 2"
BH505181	BOLT, HEX, UNC, 5/16" X 2 1/4"
BH505201	BOLT, HEX, UNC, 5/16" X 2 1/2"
BH505241	

	BOLT, HEX, UNC, 5/16" X 3"
GHF104	BOLT, UNF, 5/16" X 1 1/2"
GHF105	BOLT, UNF, 3/8" X 1" (shorter of the two starter mounting bolts)
GHF106	BOLT, UNF, 3/8" X 1 1/2"
AHH7921.	BUSH, ANTIROLLBAR MOUNTING, 11/16"
1B4526.	BUSH, ANTIROLLBAR MOUNTING, 5/8"
AHH6541.	BUSH, ANTIROLLBAR MOUNTING, 9/16"
CN3	CAGE, CAPTIVE NUT, OBLONG, 7/16" AF
CN2	CAGE, CAPTIVE NUT, SQUARE, 7/16" AF
600032	CAGE, CAPTIVE NUT, SQUARE, 1/2" AF
BMK385	CLIP, FUEL PIPE, 1/4"
17H1595	CLIP, HEATERBOX, 3"
GHC10408	CLIP, HOSE, JUBILEE, STAINLESS, 8-12mm
GHC10410	CLIP, HOSE, JUBILEE, STAINLESS, 12-18mm
GHC10411	CLIP, HOSE, JUBILEE, STAINLESS, 8-16mm
GHC10412	CLIP, HOSE, JUBILEE, STAINLESS, 12-20mm
GHC10413	CLIP, HOSE, JUBILEE, STAINLESS, 16-25mm
GHC10414	CLIP, HOSE, JUBILEE, STAINLESS, 20-32mm
GHC10415	CLIP, HOSE, JUBILEE, STAINLESS, 25-40mm
GHC10416	CLIP, HOSE, JUBILEE, STAINLESS, 32-50mm
GHC10417	CLIP, HOSE, JUBILEE, STAINLESS, 46-60mm
GHC10418	CLIP, HOSE, JUBILEE, STAINLESS, 50-70mm
GHC10419	CLIP, HOSE, JUBILEE, STAINLESS, 60-80mm
GHC10420	CLIP, HOSE, JUBILEE, STAINLESS, 70-90mm
GHC10421	CLIP, HOSE, JUBILEE, STAINLESS, 80-100mm
GHC1015	CLIP, HOSE, JUBILEE, STEEL, 1 3/8" - 2"
GHC1217	CLIP, HOSE, JUBILEE, STEEL, 1 1/2" - 2 1/4"
GHC1622	CLIP, HOSE, JUBILEE, STEEL, 2" - 2 3/4"
GHC2228	CLIP, HOSE, JUBILEE, STEEL, 2 3/4" - 3 1/2"
GHC2632	CLIP, HOSE, JUBILEE, STEEL, 3 1/4" - 4"
GHC3036	CLIP, HOSE, JUBILEE, STEEL, 3 3/4" - 4 1/2"
GHC304	CLIP, HOSE, JUBILEE, STEEL, 3/8" - 1/2"
GHC3340	CLIP, HOSE, JUBILEE, STEEL, 4 1/8" - 5"
GHC405	CLIP, HOSE, JUBILEE, STEEL, 7/16" - 5/8"
GHC406	CLIP, HOSE, JUBILEE, STEEL, 1/2" - 3/4"
GHC507	CLIP, HOSE, JUBILEE, STEEL, 5/8" - 7/8"
GHC608	CLIP, HOSE, JUBILEE, STEEL, 3/4" - 1"
GHC709	CLIP, HOSE, JUBILEE, STEEL, 5/8" - 1 1/8"
GHC811	CLIP, HOSE, JUBILEE, STEEL, 1" - 1 3/8"
GHC913	CLIP, HOSE, JUBILEE, STEEL, 1 1/8" - 1 5/8"
CS4009	CLIP, HOSE, WIRE, 7/16" - 9/16"
CS4011	CLIP, HOSE, WIRE, 1/2" - 11/16"
CS4012	CLIP, HOSE, WIRE, 9/16" - 3/4"
CS4013	CLIP, HOSE, WIRE, 5/8" - 13/16"
CS4014	CLIP, HOSE, WIRE, 11/16" - 7/8"
CS4016	CLIP, HOSE, WIRE, 3/4" - 1"
CS4017	CLIP, HOSE, WIRE, 13/16" - 1 1/16"
CS4018	CLIP, HOSE, WIRE, 7/8" - 1 1/8"
CS4020	CLIP, HOSE, WIRE, 1" - 1 1/4"
CS4022	CLIP, HOSE, WIRE, 1 1/8" - 1 3/8"
CS4023	

	CLIP, HOSE, WIRE, 1 1/4" - 1 7/16"
CS4024	CLIP, HOSE, WIRE, 1 5/16" - 1 1/2"
CS4025	CLIP, HOSE, WIRE, 1 3/8" - 1 9/16"
CS4026	CLIP, HOSE, WIRE, 1 7/16" - 1 5/8"
CS4028	CLIP, HOSE, WIRE, 1 9/16" - 1 3/4"
CS4029	CLIP, HOSE, WIRE, 1 5/8" - 1 13/16"
CS4030	CLIP, HOSE, WIRE, 1 11/16" - 1 7/8"
CS4032	CLIP, HOSE, WIRE, 1 7/8" - 2"
CS4034	CLIP, HOSE, WIRE, 1 15/16" - 2 1/8"
CS4036	CLIP, HOSE, WIRE, 2 1/16" - 2 1/4"
CS4037	CLIP, HOSE, WIRE, 2 1/8" - 2 5/16"
CS4038	CLIP, HOSE, WIRE, 2 3/16" - 2 7/16"
CS4039	CLIP, HOSE, WIRE, 2 1/4" - 2 7/16"
CS4040	CLIP, HOSE, WIRE, 2 5/16" - 2 1/2"
CS4041	CLIP, HOSE, WIRE, 2 3/8" - 2 9/16"
CS4042	CLIP, HOSE, WIRE, 2 7/16" - 2 5/8"
CS4048	CLIP, HOSE, WIRE, 2 13/16" - 3"
CS4052	CLIP, HOSE, WIRE, 3 1/16" - 3 1/4"
CS4064	CLIP, HOSE, WIRE, 3 13/16" - 4"
PCR1007	CLIP, P-CLIP, IMPERIAL, FIXING HOLE, 7/32" CABLE DIA 5/8"
PCR1009	CLIP, P-CLIP, IMPERIAL, FIXING HOLE, 9/32" CABLE DIA 5/8"
PCR1011	CLIP, P-CLIP, IMPERIAL, FIXING HOLE, 11/32" CABLE DIA 5/8"
PCR1207	CLIP, P-CLIP, IMPERIAL, FIXING HOLE, 7/32" CABLE DIA 3/4"
PCR1209	CLIP, P-CLIP, IMPERIAL, FIXING HOLE, 9/32" CABLE DIA 3/4"
PCR1211	CLIP, P-CLIP, IMPERIAL, FIXING HOLE, 11/32" CABLE DIA 3/4"
PCR1407	CLIP, P-CLIP, IMPERIAL, FIXING HOLE, 7/32" CABLE DIA 7/8"
PCR1409	CLIP, P-CLIP, IMPERIAL, FIXING HOLE, 9/32" CABLE DIA 7/8"
PCR1411	CLIP, P-CLIP, IMPERIAL, FIXING HOLE, 11/32" CABLE DIA 7/8"
PCR1607	CLIP, P-CLIP, IMPERIAL, FIXING HOLE, 7/32" CABLE DIA 1"
PCR207	CLIP, P-CLIP, IMPERIAL, FIXING HOLE, 7/32" CABLE DIA 1/8"
PCR307	CLIP, P-CLIP, IMPERIAL, FIXING HOLE, 7/32" CABLE DIA 3/16"
PCR309	CLIP, P-CLIP, IMPERIAL, FIXING HOLE, 9/32" CABLE DIA 3/16"
PCR311	CLIP, P-CLIP, IMPERIAL, FIXING HOLE, 11/32" CABLE DIA 3/16"
PCR407	CLIP, P-CLIP, IMPERIAL, FIXING HOLE, 7/32" CABLE DIA 1/4"
PCR409	CLIP, P-CLIP, IMPERIAL, FIXING HOLE, 9/32" CABLE DIA 1/4"
PCR411	CLIP, P-CLIP, IMPERIAL, FIXING HOLE, 11/32" CABLE DIA 1/4"
PCR507	CLIP, P-CLIP, IMPERIAL, FIXING HOLE, 7/32" CABLE DIA 5/16"
PCR509	CLIP, P-CLIP, IMPERIAL, FIXING HOLE, 9/32" CABLE DIA 5/16"
PCR511	CLIP, P-CLIP, IMPERIAL, FIXING HOLE, 11/32" CABLE DIA 5/16"
PCR607	CLIP, P-CLIP, IMPERIAL, FIXING HOLE, 7/32" CABLE DIA 3/8"
PCR609	CLIP, P-CLIP, IMPERIAL, FIXING HOLE, 9/32" CABLE DIA 3/8"
PCR611	CLIP, P-CLIP, IMPERIAL, FIXING HOLE, 11/32" CABLE DIA 3/8"
PCR707	CLIP, P-CLIP, IMPERIAL, FIXING HOLE, 7/32" CABLE DIA 7/16"
PCR709	CLIP, P-CLIP, IMPERIAL, FIXING HOLE, 9/32" CABLE DIA 7/16"
PCR711	CLIP, P-CLIP, IMPERIAL, FIXING HOLE, 11/32" CABLE DIA 7/16"
PCR807	CLIP, P-CLIP, IMPERIAL, FIXING HOLE, 7/32" CABLE DIA 1/2"
PCR809	CLIP, P-CLIP, IMPERIAL, FIXING HOLE, 9/32" CABLE DIA 1/2"
PCR811	CLIP, P-CLIP, IMPERIAL, FIXING HOLE, 1/32" CABLE DIA 1/2"
PCR813	CLIP, P-CLIP, IMPERIAL, FIXING HOLE, 13/32" CABLE DIA 1/2"
CPI05081	CLIP, P-CLIP, METRIC, FIXING HOLE, 5mm CABLE DIA 8mm

	CLIP, P-CLIP, METRIC, FIXING HOLE, 6mm CABLE DIA 16mm
CP108101	CLIP, P-CLIP, METRIC, FIXING HOLE, 8mm CABLE DIA 10mm
CP108121	CLIP, P-CLIP, METRIC, FIXING HOLE, 8mm CABLE DIA 12mm
CP108165	CLIP, P-CLIP, METRIC, FIXING HOLE, 8mm CABLE DIA 16mm
GGT1108X	CLIP, PETROL PIPE, ENOT, 8mm
GGT1109X	CLIP, PETROL PIPE, ENOT, 9mm
GGT1110X	CLIP, PETROL PIPE, ENOT, 10mm
GGT1111X	CLIP, PETROL PIPE, ENOT, 11mm
GGT1112X	CLIP, PETROL PIPE, ENOT, 12mm
GGT1113X	CLIP, PETROL PIPE, ENOT, 13mm
GGT1114X	CLIP, PETROL PIPE, ENOT, 14mm
GGT1115X	CLIP, PETROL PIPE, ENOT, 15mm
GGT1116X	CLIP, PETROL PIPE, ENOT, 16mm
GGT1117X	CLIP, PETROL PIPE, ENOT, 17mm
624155	CLIP, PIPE, Double, 3/16"
GHF1191	CLIP, PIPE, Single, 3/16"
GHF1192	CLIP, PIPE, Single, 1/4"
DP204	DOWEL, 1/8" X 1/4"
DP205	DOWEL, 1/8" X 5/16"
DP306	DOWEL, 3/16" X 3/8"
DP407	DOWEL, 1/4" X 7/16"
DP408	DOWEL, 1/4" X 1/2"
DP410	DOWEL, 1/4" X 5/8"
DP411	DOWEL, 1/4" X 11/16"
DP414	DOWEL, 1/4" X 7/8"
DP508	DOWEL, 5/16" X 1/2"
DP514	DOWEL, 5/16" X 7/8"
DP608	DOWEL, 3/8" X 1/2"
DP610	DOWEL, 3/8" X 5/8"
DP619	DOWEL, 3/8" X 1 3/16"
ACB8474	GROMMET
RFR503	GROMMET 1"OD X 3/16"
5L62	GROMMET 1"OD x 1/8"ID
5L489	GROMMET 1-3/4 INCH
RFN303	GROMMET 5/8"OD x 3/16"ID
RFN403	GROMMET 5/8"OD X 3/16"ID
3H822	GROMMET, 3/4"OD x 1/2"ID
14A7033	GROMMET, 5/8"OD x 3/16"ID
RFN210	GROMMET, BLANKING, 5/8"
RFN207	GROMMET, BLANKING, 7/16
CFP1000	GROMMET, BLANKING, PLASTIC, 1"
CFP500	GROMMET, BLANKING, PLASTIC, 1/2"
CFP750	GROMMET, BLANKING, PLASTIC, 3/4"
CFP375	GROMMET, BLANKING, PLASTIC, 3/8"
CFP625	GROMMET, BLANKING, PLASTIC, 5/8"
2H2065	GROMMET, WIRING, 1-5/8" x 5/8"
125361	NIPPLE, GREASE, 45 DEGREE, 1/4" BSP
UHN445	NIPPLE, GREASE, 45 DEGREE, 1/8" BSP
56934	NIPPLE, GREASE, 90 DEGREE, 1/4" BSP
LN30041	NIPPLE, GREASE, 90 DEGREE, 1/8" BSP
56935	

	NIPPLE, GREASE, STRAIGHT, 1/4" BSP
144825	NIPPLE, GREASE, STRAIGHT, LONG, 1/8" BSP
UHN400	NIPPLE, GREASE, STRAIGHT, SHORT, 1/8" BSP
GHF211	NUT M4 METRIC
NQ2708	NUT, 5/8" AF 5/16"
NQ2707	NUT, 7/16" AF 1/4"
AEHU1A	NUT, BRAKE/CLUTCH/FUEL PIPE, FEMALE, BRASS, 3/8" UNF PIPE DIA 3/16"
AEHU2A	NUT, BRAKE/CLUTCH/FUEL PIPE, FEMALE, BRASS, 10mm x 1mm PIPE DIA 3/16"
AEHU4A	NUT, BRAKE/CLUTCH/FUEL PIPE, FEMALE, BRASS, 7/16" UNF PIPE DIA 1/4"
HU41A	NUT, BRAKE/CLUTCH/FUEL PIPE, FEMALE, STEEL, 1/2" UNF PIPE DIA 5/16"
SU2A	NUT, BRAKE/CLUTCH/FUEL PIPE, FEMALE, STEEL, 10mm x 1mm PIPE DIA 3/16"
SU4A	NUT, BRAKE/CLUTCH/FUEL PIPE, FEMALE, STEEL, 7/16" UNF PIPE DIA 1/4"
TN606031	NUT, BRAKE/CLUTCH/FUEL PIPE, FEMALE, STEEL, 3/8" UNF PIPE DIA 3/16"
AEHU1	NUT, BRAKE/CLUTCH/FUEL PIPE, MALE, BRASS, 3/8" UNF PIPE DIA 3/16"
AEHU2	NUT, BRAKE/CLUTCH/FUEL PIPE, MALE, BRASS, 10mm x 1mm PIPE DIA 3/16"
AEHU3	NUT, BRAKE/CLUTCH/FUEL PIPE, MALE, BRASS, 3/8" BSF PIPE DIA 3/16"
AEHU7	NUT, BRAKE/CLUTCH/FUEL PIPE, MALE, BRASS, 7/16" UNF PIPE DIA 1/4"
AUSU40A	NUT, BRAKE/CLUTCH/FUEL PIPE, MALE, STEEL, 1/2" UNF PIPE DIA 5/16"
BCA4370	NUT, BRAKE/CLUTCH/FUEL PIPE, MALE, STEEL, 7/16" UNF PIPE DIA 3/16"
BHA4706	NUT, BRAKE/CLUTCH/FUEL PIPE, MALE, STEEL, 7/16" UNF PIPE DIA 1/4"
LK21994	NUT, BRAKE/CLUTCH/FUEL PIPE, MALE, STEEL, 3/8" BSF PIPE DIA 3/16"
TM110051	NUT, BRAKE/CLUTCH/FUEL PIPE, MALE, STEEL, 10mm x 1mm PIPE DIA 3/16"
TM606031	NUT, BRAKE/CLUTCH/FUEL PIPE, MALE, STEEL, 3/8" UNF PIPE DIA 3/16"
GHF261	NUT, BRASS, PLAIN, 5/16" UNF
GHF262	NUT, BRASS, PLAIN, 3/8" UNF
GHF269	NUT, BRASS, PLAIN, 3/8" UNC
GHF270	NUT, BRASS, PLAIN, 5/16" UNC
NQ2708	NUT, CAPTIVE, 5/16"
NQ2707	NUT, CAPTIVE, USE CAGE CN2 OR CN3, 1/4"
CN4	NUT, CAPTIVE, USE CAGE CN3, 1/4"
CN5	NUT, CAPTIVE, USE CAGE, 60032, 5/16"
ND606041	NUT, CASTLE, FULL, 3/8"
ND607041	NUT, CASTLE, FULL, 7/16"
ND608041	NUT, CASTLE, FULL, 1/2"
ND609041	NUT, CASTLE, FULL, 9/16"
ND610041	NUT, CASTLE, FULL, 5/8"
NL606041	NUT, CASTLE, HALF, 3/8" UNF X 9/16"
NL607041	NUT, CASTLE, HALF, 7/16" UNF X 5/8"
NL608041	NUT, CASTLE, HALF, 1/2" UNF X 3/4"
NL609041	NUT, CASTLE, HALF, 9/16" UNF X 7/8"
NL610041	NUT, CASTLE, HALF, 5/8" UNF X 15/16"
LN2209	NUT, CASTLE, HALF, 3/8"
LN2211	NUT, CASTLE, HALF, 1/2"
LN2212	NUT, CASTLE, HALF, 9/16"
NL607041	NUT, CASTLE, HALF, 7/16"
14B2685	NUT, CHROME DOME, 5/16UNF
BNN105	NUT, HEX BRASS, UNF, 5/16"
MNZ206	NUT, HEX,
FNZ504	NUT, HEX, HIGH TENSILE, ZINC, UNF, 1/4"
FNZ505	NUT, HEX, HIGH TENSILE, ZINC, UNF, 5/16"
FNZ506	

	NUT, HEX, HIGH TENSILE, ZINC, UNF, 3/8"
FNZ507	NUT, HEX, HIGH TENSILE, ZINC, UNF, 7/16"
FNZ508	NUT, HEX, HIGH TENSILE, ZINC, UNF, 1/2"
FNZ512	NUT, HEX, HIGH TENSILE, ZINC, UNF, 3/4"
FNZ604	NUT, HEX, LOCK, HIGH TENSILE, ZINC, UNF, 1/4"
FNZ607	NUT, HEX, LOCK, HIGH TENSILE, ZINC, UNF, 7/16"
FNZ612	NUT, HEX, LOCK, HIGH TENSILE, ZINC, UNF, 3/4"
FNN104	NUT, HEX, PLAIN, UNF, 1/4"
NH910011	NUT, HEX, PLAIN, UNF, 3/16"
FNN105	NUT, HEX, PLAIN, UNF, 5/16"
FNN107	NUT, HEX, PLAIN, UNF, 7/16"
FNZ308	NUT, HEX, SLOTTED, THICK, ZINC, UNF, 1/2"
FNZ408	NUT, HEX, SLOTTED, ZINC, UNF, 1/2"
FNZ407	NUT, HEX, SLOTTED, ZINC, UNF, 7/16"
NH604041	NUT, HEX, UNF, 1/4"
NH606041	NUT, HEX, UNF, 3/8"
NH605041	NUT, HEX, UNF, 5/16"
FNZ108	NUT, HEX, ZINC, UNF, 1/2"
FNZ104	NUT, HEX, ZINC, UNF, 1/4"
FNZ106	NUT, HEX, ZINC, UNF, 3/8"
FNZ105	NUT, HEX, ZINC, UNF, 5/16"
FNZ107	NUT, HEX, ZINC, UNF, 7/16"
FNZ103	NUT, HEX, ZINC, UNF, NO.10
CNZ102	NUT, HEX, ZINC, UNF, NO.6
AN3507	NUT, LOCK, FULL, 1/4"
AN3508	NUT, LOCK, FULL, 5/16"
AN3509	NUT, LOCK, FULL, 3/8"
AN3510	NUT, LOCK, FULL, 7/16"
AN3511	NUT, LOCK, FULL, 1/2"
FNP103	NUT, LOCK, HEX, CHROME, UNF, NO.10
FNN604	NUT, LOCK, HEX, PLAIN, HIGH TENSILE, UNF, 1/4"
FNP205	NUT, LOCK, HEX, PLAIN, UNF, 5/16"
FNN207	NUT, LOCK, HEX, PLAIN, UNF, 7/16"
FNZ204	NUT, LOCK, HEX, ZINC, UNF, 1/4"
FNZ206	NUT, LOCK, HEX, ZINC, UNF, 3/8"
FNZ205	NUT, LOCK, HEX, ZINC, UNF, 5/16"
LNN208	NUT, LOCK, PLAIN, UNF, 1/2"
NH806011	NUT, LOCK, UNC, NO.6
LNZ102	NUT, LOCK, ZINC, UNF, NO.6
LNZ103	NUT, LOCK, ZINC, UNF, NO.10
LNZ104	NUT, LOCK, ZINC, UNF, 1/4"
LNZ105	NUT, LOCK, ZINC, UNF, 5/16"
LNZ106	NUT, LOCK, ZINC, UNF, 3/8"
LNZ108	NUT, LOCK, ZINC, UNF, 1/2"
LNZ405	NUT, LOCK, ZINC, UNF, 5/16"
LNZ406	NUT, LOCK, ZINC, UNF, 3/8"
GHF241	NUT, LOCKING, 1/4" UNF
GHF242	NUT, LOCKING, 5/16" UNF
GHF243	NUT, LOCKING, 3/8" UNF
GHF244	NUT, LOCKING, 7/16" UNF
GHF245	

	NUT, LOCKING, 1/2" UNF
GHF220	NUT, NYLOC, FULL, 3/16" UNF
GHF2203	NUT, NYLOC, FULL 3/16" UNF X 3/8"
GHF221	NUT, NYLOC, FULL, 1/4" UNF
GHF222	NUT, NYLOC, FULL, 5/16" UNF
GHF223	NUT, NYLOC, FULL, 3/8" UNF
GHF224	NUT, NYLOC, FULL, 7/16" UNF
GHF225	NUT, NYLOC, FULL, 1/2" UNF
GHF226	NUT, NYLOC, FULL, 5/8" UNF
GHF272	NUT, NYLOC, HALF, 5/16" UNF
GHF273	NUT, NYLOC, HALF, 3/8" UNF
GHF274	NUT, NYLOC, HALF, 7/16" UNF
GHF275	NUT, NYLOC, HALF, 1/2" UNF
GHF276	NUT, NYLOC, HALF, 5/8" UNF
TN3212	NUT, NYLOC, HALF, 9/16" UNF
GHF271	NUT, NYLOC, HALF, 1/4"
TN3208	NUT, NYLOC, HALF, 5/16"
TN3209	NUT, NYLOC, HALF, 3/8"
TN3210	NUT, NYLOC, HALF, 7/16"
TN3211	NUT, NYLOC, HALF, 1/2"
TN3212	NUT, NYLOC, HALF, 9/16"
TN3213	NUT, NYLOC, HALF, 5/8"
YN2905	NUT, NYLOCK, FULL, 3/16"
YN2907	NUT, NYLOCK, FULL, 1/4"
YN2908	NUT, NYLOCK, FULL, 5/16"
YN2909	NUT, NYLOCK, FULL, 3/8"
YN2910	NUT, NYLOCK, FULL, 7/16"
YN2911	NUT, NYLOCK, FULL, 1/2"
YN2912	NUT, NYLOCK, FULL, 9/16"
YN2913	NUT, NYLOCK, FULL, 5/8"
LNZ203	NUT, NYLOCK, ZINC, UNF, NO.10
LNZ204	NUT, NYLOCK, ZINC, UNF, 1/4"
LNZ205	NUT, NYLOCK, ZINC, UNF, 5/16"
LNZ206	NUT, NYLOCK, ZINC, UNF, 3/8"
LNZ207	NUT, NYLOCK, ZINC, UNF, 7/16"
LNZ208	NUT, NYLOCK, ZINC, UNF, 1/2"
GHF200	NUT, PLAIN, FULL, 1/4" UNF X 7/16"
GHF201	NUT, PLAIN, FULL, 5/16" UNF X 1/2"
GHF202	NUT, PLAIN, FULL, 3/8" UNF X 9/16"
GHF203	NUT, PLAIN, FULL, 7/16" UNF X 5/8"
GHF204	NUT, PLAIN, FULL, 1/2" UNF X 3/4"
GHF207	NUT, PLAIN, FULL, 1/4" UNC X 7/16"
GHF208	NUT, PLAIN, FULL, 5/16" UNC X 1/2"
GHF209	NUT, PLAIN, FULL, 3/8" UNC X 9/16"
NH609041	NUT, PLAIN, FULL, 9/19" UNF X 7/8"
NH610041	NUT, PLAIN, FULL, 5/8" UNF X 15/16"
HN2007	NUT, PLAIN, FULL, 1/4"
HN2008	NUT, PLAIN, FULL, 5/16"
HN2009	NUT, PLAIN, FULL, 3/8"
HN2010	NUT, PLAIN, FULL, 7/16"
HN2011	

	NUT, PLAIN, FULL, 1/2"
HN2012	NUT, PLAIN, FULL, 9/16"
HN2013	NUT, PLAIN, FULL, 5/8"
HN2057	NUT, PLAIN, FULL, 1/4"
HN2058	NUT, PLAIN, FULL, 5/16"
HN2059	NUT, PLAIN, FULL, 3/8"
HN2005	NUT, PLAIN, FULL, SPANNER SIZE 3/8", 3/16"
GHF206	NUT, PLAIN, FULL, SPANNER SIZE 5/16", 3/16"
HN2003	NUT, PLAIN, FULL, UNF, SPANNER SIZE 5/16"NO.6
NT504041	NUT, PLAIN, HALF, 1/4" UNC X 7/16"
NT505041	NUT, PLAIN, HALF, 5/16" UNC X 1/2"
NT506041	NUT, PLAIN, HALF, 3/8" UNC X 9/16"
NT604041	NUT, PLAIN, HALF, 1/4" UNF X 7/16"
NT605041	NUT, PLAIN, HALF, 5/16" UNF X 1/2"
NT606041	NUT, PLAIN, HALF, 3/8" UNF X 9/16"
NT607041	NUT, PLAIN, HALF, 7/16" UNF X 5/8"
NT608041	NUT, PLAIN, HALF, 1/2" UNF X 3/4"
NT609041	NUT, PLAIN, HALF, 9/19" UNF X 7/8"
NT610041	NUT, PLAIN, HALF, 5/8" UNF X 15/16"
JN2108	NUT, PLAIN, HALF, 5/16"
JN2109	NUT, PLAIN, HALF, 3/8"
JN2110	NUT, PLAIN, HALF, 7/16"
JN2111	NUT, PLAIN, HALF, 1/2"
JN2112	NUT, PLAIN, HALF, 9/16"
JN2113	NUT, PLAIN, HALF, 5/8"
JN2157	NUT, PLAIN, HALF, 1/4"
JN2158	NUT, PLAIN, HALF, 5/16"
JN2159	NUT, PLAIN, HALF, 3/8"
NJ2107	NUT, PLAIN, HALF, 1/4"
PFS104S	NUT, SPIRE, 1/8"
PFS106S	NUT, SPIRE, 3/16"
PFS103S	NUT, SPIRE, 3/32"
PFS105S	NUT, SPIRE, 5/32"
GHF700	NUT, SPIRE, FLAT, No.6
GHF701	NUT, SPIRE, FLAT, No.8
GHF702	NUT, SPIRE, FLAT, No.10
GHF703	NUT, SPIRE, FLAT, No.12
GHF704	NUT, SPIRE, FLAT, No.14
GHF711	NUT, SPIRE, FOLDED, No.6
GHF712	NUT, SPIRE, FOLDED, No.8
GHF713	NUT, SPIRE, FOLDED, No.10
GHF714	NUT, SPIRE, FOLDED, No.12
108326	PIN, CLEVIS, 1/8" X 1/2"
CLZ307	PIN, CLEVIS, LENGTH IS FROM UNDER HEAD TO CENTRE OF HOLE, 3/16" X 7/16"
CLZ308	PIN, CLEVIS, LENGTH IS FROM UNDER HEAD TO CENTRE OF HOLE, 3/16" X 1/2"
CLZ309	PIN, CLEVIS, LENGTH IS FROM UNDER HEAD TO CENTRE OF HOLE, 3/16" X 9/16"
CLZ310	PIN, CLEVIS, LENGTH IS FROM UNDER HEAD TO CENTRE OF HOLE, 3/16" X 5/8"
CLZ311	PIN, CLEVIS, LENGTH IS FROM UNDER HEAD TO CENTRE OF HOLE, 3/16" X 11/16"
CLZ312	PIN, CLEVIS, LENGTH IS FROM UNDER HEAD TO CENTRE OF HOLE, 3/16" X 3/4"
CLZ313	PIN, CLEVIS, LENGTH IS FROM UNDER HEAD TO CENTRE OF HOLE, 3/16" X 13/16"
CLZ314	

	PIN, CLEVIS, LENGTH IS FROM UNDER HEAD TO CENTRE OF HOLE, 3/16" X 7/8"
CLZ315	PIN, CLEVIS, LENGTH IS FROM UNDER HEAD TO CENTRE OF HOLE, 3/16" X 15/16"
CLZ316	PIN, CLEVIS, LENGTH IS FROM UNDER HEAD TO CENTRE OF HOLE, 3/16" X 1"
CLZ317	PIN, CLEVIS, LENGTH IS FROM UNDER HEAD TO CENTRE OF HOLE, 3/16" X 1 1/16"
CLZ408	PIN, CLEVIS, LENGTH IS FROM UNDER HEAD TO CENTRE OF HOLE, 1/4" X 1/2"
CLZ409	PIN, CLEVIS, LENGTH IS FROM UNDER HEAD TO CENTRE OF HOLE, 1/4" X 9/19"
CLZ410	PIN, CLEVIS, LENGTH IS FROM UNDER HEAD TO CENTRE OF HOLE, 1/4" X 5/8"
CLZ411	PIN, CLEVIS, LENGTH IS FROM UNDER HEAD TO CENTRE OF HOLE, 1/4" X 11/16"
CLZ412	PIN, CLEVIS, LENGTH IS FROM UNDER HEAD TO CENTRE OF HOLE, 1/4" X 3/4"
CLZ413	PIN, CLEVIS, LENGTH IS FROM UNDER HEAD TO CENTRE OF HOLE, 1/4" X 13/16"
CLZ414	PIN, CLEVIS, LENGTH IS FROM UNDER HEAD TO CENTRE OF HOLE, 1/4" X 7/8"
CLZ415	PIN, CLEVIS, LENGTH IS FROM UNDER HEAD TO CENTRE OF HOLE, 1/4" X 15/16"
CLZ416	PIN, CLEVIS, LENGTH IS FROM UNDER HEAD TO CENTRE OF HOLE, 1/4" X 1"
CLZ417	PIN, CLEVIS, LENGTH IS FROM UNDER HEAD TO CENTRE OF HOLE, 1/4" X 1 1/16"
CLZ427	PIN, CLEVIS, LENGTH IS FROM UNDER HEAD TO CENTRE OF HOLE, 1/4" X 1 11/16"
CLZ510	PIN, CLEVIS, LENGTH IS FROM UNDER HEAD TO CENTRE OF HOLE, 5/16" X 5/8"
CLZ511	PIN, CLEVIS, LENGTH IS FROM UNDER HEAD TO CENTRE OF HOLE, 5/16" X 11/16"
CLZ512	PIN, CLEVIS, LENGTH IS FROM UNDER HEAD TO CENTRE OF HOLE, 5/16" X 3/4"
CLZ513	PIN, CLEVIS, LENGTH IS FROM UNDER HEAD TO CENTRE OF HOLE, 5/16" X 13/16"
CLZ514	PIN, CLEVIS, LENGTH IS FROM UNDER HEAD TO CENTRE OF HOLE, 5/16" X 7/8"
CLZ515	PIN, CLEVIS, LENGTH IS FROM UNDER HEAD TO CENTRE OF HOLE, 5/16" X 15/16"
CLZ516	PIN, CLEVIS, LENGTH IS FROM UNDER HEAD TO CENTRE OF HOLE, 5/16" X 1"
CLZ517	PIN, CLEVIS, LENGTH IS FROM UNDER HEAD TO CENTRE OF HOLE, 5/16" X 1 1/16"
CLZ518	PIN, CLEVIS, LENGTH IS FROM UNDER HEAD TO CENTRE OF HOLE, 5/16" X 1 1/18"
PJ8504	PIN, CLEVIS, LENGTH IS FROM UNDER HEAD TO END, 3/16" X 3/8"
GHF500	PIN, SPLIT, 1/16" X 1 1/2"
GHF501	PIN, SPLIT, 5/64" X 1 1/2"
GHF502	PIN, SPLIT, 3/32" X 1 1/2"
GHF503	PIN, SPLIT, 7/64" X 2 1/4"
GHF504	PIN, SPLIT, 1/8" X 2 1/4"
GHF505	PIN, SPLIT, 9/64" X 2 1/4"
GHF506	PIN, SPLIT, 3/32" X 2 1/4"
GHF513	PIN, SPLIT, 3/16" X 3"
RU608123	RIVET, POP, CLOSED END, 1/8" x 3/8"
RU608313	RIVET, POP, CLOSED END, 1/8" x 1/2"
RU612123	RIVET, POP, CLOSED END, 3/16" x 5/16"
RA607096	RIVET, POP, OPEN END, 2.9mm x 5mm
RA608126	RIVET, POP, OPEN END, 1/8" x 3/16"
RA608176	RIVET, POP, OPEN END, 1/8" x 1/4"
RA608236	RIVET, POP, OPEN END, 1/8" x 5/16"
RA608253	RIVET, POP, OPEN END, 1/8" x 3/8"
GHF421	SCREW 6X 1/2 AB606041, SELF TAP
NCS612	SCREW, 3/8"
NCS505	SCREW, 5/16"
27H7166	SCREW, BLEED, BRAKE/CLUTCH, 3/8" BSF
556508A	SCREW, BLEED, BRAKE/CLUTCH, 3/8" UNF
608400A	SCREW, BLEED, BRAKE/CLUTCH, 10mm metric
CMP308	SCREW, CROSS HEAD, CSK, CHROME, UNF, NO.10 X 1/2"
CMP310	SCREW, CROSS HEAD, CSK, CHROME, UNF, NO.10 X 5/8"
CMZ203	SCREW, CROSS HEAD, CSK, ZINC, UNF, NO.6 X 3/16"
CMZ204	

	SCREW, CROSS HEAD, CSK, ZINC, UNF, NO.6 X 1/4"
CMZ208	SCREW, CROSS HEAD, CSK, ZINC, UNF, NO.6 X 1/2"
CMZ304	SCREW, CROSS HEAD, CSK, ZINC, UNF, NO.10 X 1/4"
CMZ305	SCREW, CROSS HEAD, CSK, ZINC, UNF, NO.10 X 5/16"
CMZ306	SCREW, CROSS HEAD, CSK, ZINC, UNF, NO.10 X 3/8"
CMZ307	SCREW, CROSS HEAD, CSK, ZINC, UNF, NO.10 X 7/16"
CMZ308	SCREW, CROSS HEAD, CSK, ZINC, UNF, NO.10 X 1/2"
CMZ310	SCREW, CROSS HEAD, CSK, ZINC, UNF, NO.10 X 5/8"
CMZ312	SCREW, CROSS HEAD, CSK, ZINC, UNF, NO.10 X 3/4"
CMZ316	SCREW, CROSS HEAD, CSK, ZINC, UNF, NO.10 X 1"
CMZ420	SCREW, CROSS HEAD, CSK, ZINC, UNF, 1/4", 1 1/4"
CMZ428	SCREW, CROSS HEAD, CSK, ZINC, UNF, 1/4", 1 3/4"
CMZ416	SCREW, CROSS HEAD, CSK, ZINC, UNF, 1/4", 1"
CMZ408	SCREW, CROSS HEAD, CSK, ZINC, UNF, 1/4", 1/2"
CMZ412	SCREW, CROSS HEAD, CSK, ZINC, UNF, 1/4", 3/4"
CMZ410	SCREW, CROSS HEAD, CSK, ZINC, UNF, 1/4", 5/8"
CMZ407	SCREW, CROSS HEAD, CSK, ZINC, UNF, 1/4", 7/16"
CMZ414	SCREW, CROSS HEAD, CSK, ZINC, UNF, 1/4", 7/8"
CMZ516	SCREW, CROSS HEAD, CSK, ZINC, UNF, 5/16", 1"
CMZ512	SCREW, CROSS HEAD, CSK, ZINC, UNF, 5/16, 3/4"
PMP208	SCREW, CROSS HEAD, PAN HEAD, CHROME, UNF, NO.6 X 1/2"
PMP214	SCREW, CROSS HEAD, PAN HEAD, CHROME, UNF, NO.6 X 7/8"
PMP308	SCREW, CROSS HEAD, PAN HEAD, CHROME, UNF, NO.10 X 1/2"
PMP312	SCREW, CROSS HEAD, PAN HEAD, CHROME, UNF, NO.10 X 3/4"
PMP412	SCREW, CROSS HEAD, PAN HEAD, CHROME, UNF, 1/4" X 3/4"
PMP516	SCREW, CROSS HEAD, PAN HEAD, CHROME, UNF, 5/16" X 1"
PPZ308	SCREW, CROSS HEAD, PAN HEAD, POINTED, ZINC, UNF, NO.10 X 1/2"
PMZ204	SCREW, CROSS HEAD, PAN HEAD, ZINC, UNF, NO.6 X 1/4"
PMZ206	SCREW, CROSS HEAD, PAN HEAD, ZINC, UNF, NO.6 X 3/8"
PMZ208	SCREW, CROSS HEAD, PAN HEAD, ZINC, UNF, NO.6 X 1/2"
PMZ210	SCREW, CROSS HEAD, PAN HEAD, ZINC, UNF, NO.6 X 5/8"
PMZ216	SCREW, CROSS HEAD, PAN HEAD, ZINC, UNF, NO.6 X 1"
PTZ804	SCREW, CROSS HEAD, PAN HEAD, ZINC, UNF, NO.8 X 1/2"
PMZ304	SCREW, CROSS HEAD, PAN HEAD, ZINC, UNF, NO.10 X 1/4"
PMZ305	SCREW, CROSS HEAD, PAN HEAD, ZINC, UNF, NO.10 X 5/16"
PMZ306	SCREW, CROSS HEAD, PAN HEAD, ZINC, UNF, NO.10 X 3/8"
PMZ307	SCREW, CROSS HEAD, PAN HEAD, ZINC, UNF, NO.10 X 7/16"
PMZ308	SCREW, CROSS HEAD, PAN HEAD, ZINC, UNF, NO.10 X 1/2"
PMZ310	SCREW, CROSS HEAD, PAN HEAD, ZINC, UNF, NO.10 X 5/8"
PMZ312	SCREW, CROSS HEAD, PAN HEAD, ZINC, UNF, NO.10 X 3/4"
PMZ314	SCREW, CROSS HEAD, PAN HEAD, ZINC, UNF, NO.10 X 7/8"
PMZ316	SCREW, CROSS HEAD, PAN HEAD, ZINC, UNF, NO.10 X 1"
PMZ320	SCREW, CROSS HEAD, PAN HEAD, ZINC, UNF, NO.10 X 1 1/4"
PMZ406	SCREW, CROSS HEAD, PAN HEAD, ZINC, UNF, 1/4" X 3/8"
PMZ408	SCREW, CROSS HEAD, PAN HEAD, ZINC, UNF, 1/4" X 1/2"
PMZ410	SCREW, CROSS HEAD, PAN HEAD, ZINC, UNF, 1/4" X 5/8"
PMZ416	SCREW, CROSS HEAD, PAN HEAD, ZINC, UNF, 1/4" X 1"
PMZ810	SCREW, CROSS HEAD, PAN HEAD, ZINC, UNF, 1/2" X 5/8"
RMP212	SCREW, CSK, RAISED HEAD, CHROME, UNF, NO.6 X 3/4"
RMP214	SCREW, CSK, RAISED HEAD, CHROME, UNF, NO.6 X 7/8"
RMP206	

	SCREW, CSK, RAISED HEAD, CHROME, UNF, NO.10 X 3/8"
RMP308	SCREW, CSK, RAISED HEAD, CHROME, UNF, NO.10 X 1/2"
RMP310	SCREW, CSK, RAISED HEAD, CHROME, UNF, NO.10 X 3/8"
RMP312	SCREW, CSK, RAISED HEAD, CHROME, UNF, NO.10 X 3/4"
RMP316	SCREW, CSK, RAISED HEAD, CHROME, UNF, NO.10 X 1"
RMP320	SCREW, CSK, RAISED HEAD, CHROME, UNF, NO.10 X 1 1/4"
RMZ204	SCREW, CSK, RAISED HEAD, ZINC, UNF, NO.10 X 1/4"
RMZ308	SCREW, CSK, RAISED HEAD, ZINC, UNF, NO.10 X 1/2"
RMZ310	SCREW, CSK, RAISED HEAD, ZINC, UNF, NO.10 X 5/8"
AC610041	SCREW, CSK, SELF TAP, ZINC, UNC, No.10 X 1/2"
AC610061	SCREW, CSK, SELF TAP, ZINC, UNC, No.10 X 3/4"
AC610081	SCREW, CSK, SELF TAP, ZINC, UNC, No.10 X 1"
AC612041	SCREW, CSK, SELF TAP, ZINC, UNC, No.12 X 1/2"
AC612081	SCREW, CSK, SELF TAP, ZINC, UNC, No.12 X 1"
AC614061	SCREW, CSK, SELF TAP, ZINC, UNC, No.14 X 3/4"
AC614081	SCREW, CSK, SELF TAP, ZINC, UNC, No.14 X 1"
AC604021	SCREW, CSK, SELF TAP, ZINC, UNF, No.4 X 1/4"
AC606041	SCREW, CSK, SELF TAP, ZINC, UNF, No.6 X 1/2"
AC606061	SCREW, CSK, SELF TAP, ZINC, UNF, No.6 X 3/4"
AC606081	SCREW, CSK, SELF TAP, ZINC, UNF, No.6 X 1"
AC608041	SCREW, CSK, SELF TAP, ZINC, UNF, No.8 X 1/2"
AC608061	SCREW, CSK, SELF TAP, ZINC, UNF, No.8 X 3/4"
AHH9239	SCREW, CSK, UNF, 1/4" X 1 3/8"
HNS412	SCREW, HEX HEAD, FULL THREAD, UNF, PLAIN, 1/4" X 1 1/2"
HNS505	SCREW, HEX HEAD, FULL THREAD, UNF, PLAIN, 5/16" X 5/8"
HNS507	SCREW, HEX HEAD, FULL THREAD, UNF, PLAIN, 5/16" X 7/8"
HZS403	SCREW, HEX HEAD, FULL THREAD, UNF, ZINC, 1/4" X 3/8"
HZS404	SCREW, HEX HEAD, FULL THREAD, UNF, ZINC, 1/4" X 1/2"
HZS405	SCREW, HEX HEAD, FULL THREAD, UNF, ZINC, 1/4" X 5/8"
HZS406	SCREW, HEX HEAD, FULL THREAD, UNF, ZINC, 1/4" X 3/4"
HZS407	SCREW, HEX HEAD, FULL THREAD, UNF, ZINC, 1/4" X 7/8"
HZS408	SCREW, HEX HEAD, FULL THREAD, UNF, ZINC, 1/4" X 1"
HZS409	SCREW, HEX HEAD, FULL THREAD, UNF, ZINC, 1/4" X 1 1/8"
HZS410	SCREW, HEX HEAD, FULL THREAD, UNF, ZINC, 1/4" X 1 1/4"
HZS411	SCREW, HEX HEAD, FULL THREAD, UNF, ZINC, 1/4" X 1 3/8"
HZS412	SCREW, HEX HEAD, FULL THREAD, UNF, ZINC, 1/4" X 1 1/2"
HZS415	SCREW, HEX HEAD, FULL THREAD, UNF, ZINC, 1/4" X 1 7/8"
HZS416	SCREW, HEX HEAD, FULL THREAD, UNF, ZINC, 1/4" X 2"
HZS504	SCREW, HEX HEAD, FULL THREAD, UNF, ZINC, 5/16" X 1/2"
HZS505	SCREW, HEX HEAD, FULL THREAD, UNF, ZINC, 5/16" X 5/8"
HZS506	SCREW, HEX HEAD, FULL THREAD, UNF, ZINC, 5/16" X 3/4"
HZS507	SCREW, HEX HEAD, FULL THREAD, UNF, ZINC, 5/16" X 7/8"
HZS508	SCREW, HEX HEAD, FULL THREAD, UNF, ZINC, 5/16" X 1"
HZS509	SCREW, HEX HEAD, FULL THREAD, UNF, ZINC, 5/16" X 1 1/8"
HZS510	SCREW, HEX HEAD, FULL THREAD, UNF, ZINC, 5/16" X 1 1/4"
HZS511	SCREW, HEX HEAD, FULL THREAD, UNF, ZINC, 5/16" X 1 3/8"
HZS514	SCREW, HEX HEAD, FULL THREAD, UNF, ZINC, 5/16" X 1 3/4"
HZS603	SCREW, HEX HEAD, FULL THREAD, UNF, ZINC, 3/8" X 3/8"
HZS606	SCREW, HEX HEAD, FULL THREAD, UNF, ZINC, 3/8" X 3/4"
HZS607	SCREW, HEX HEAD, FULL THREAD, UNF, ZINC, 3/8" X 7/8"
HZS608	

	SCREW, HEX HEAD, FULL THREAD, UNF, ZINC, 3/8" X 1"
HZS610	SCREW, HEX HEAD, FULL THREAD, UNF, ZINC, 3/8" X 1 1/4"
HZS710	SCREW, HEX HEAD, FULL THREAD, UNF, ZINC, 7/16" X 1 1/4"
SH506041	SCREW, HEX, UNC, 3/8" X 1/2"
SH506061	SCREW, HEX, UNC, 3/8" X 3/4"
SH506071	SCREW, HEX, UNC, 3/8" X 7/8"
SH506081	SCREW, HEX, UNC, 3/8" X 1"
SH506091	SCREW, HEX, UNC, 3/8" X 1 1/8"
SH506101	SCREW, HEX, UNC, 3/8" X 1 1/4"
SH506111	SCREW, HEX, UNC, 3/8" X 1 3/8"
SH506121	SCREW, HEX, UNC, 3/8" X 1 1/2"
SH506161	SCREW, HEX, UNC, 3/8" X 2"
SH506241	SCREW, HEX, UNC, 3/8" X 3"
SH505031	SCREW, HEX, UNC, 5/16" X 3/8"
SH505041	SCREW, HEX, UNC, 5/16" X 1/2"
SH505051	SCREW, HEX, UNC, 5/16" X 5/8"
SH505061	SCREW, HEX, UNC, 5/16" X 3/4"
SH505071	SCREW, HEX, UNC, 5/16" X 7/8"
SH505081	SCREW, HEX, UNC, 5/16" X 1"
SH505091	SCREW, HEX, UNC, 5/16" X 1 1/8"
SH505101	SCREW, HEX, UNC, 5/16" X 1 1/4"
SH505111	SCREW, HEX, UNC, 5/16" X 1 3/8"
SH505121	SCREW, HEX, UNC, 5/16" X 1 1/2"
SH505141	SCREW, HEX, UNC, 5/16" X 1 3/4"
SH505201	SCREW, HEX, UNC, 5/16" X 2 1/2"
AB610041	SCREW, PAN HEAD, SELF TAP, ZINC, UNC, No.10 X 1/2"
AB610051	SCREW, PAN HEAD, SELF TAP, ZINC, UNC, NO.10 X 5/8"
AB610061	SCREW, PAN HEAD, SELF TAP, ZINC, UNC, No.10 X 3/4"
AB610081	SCREW, PAN HEAD, SELF TAP, ZINC, UNC, No.10 X 1"
AB612041	SCREW, PAN HEAD, SELF TAP, ZINC, UNC, No.12 X 1/2"
AB612061	SCREW, PAN HEAD, SELF TAP, ZINC, UNC, No.12 X 3/4"
AB612081	SCREW, PAN HEAD, SELF TAP, ZINC, UNC, No.12 X 1"
AB614061	SCREW, PAN HEAD, SELF TAP, ZINC, UNC, No.14 X 3/4"
AB614081	SCREW, PAN HEAD, SELF TAP, ZINC, UNC, No.14 X 1"
AB604021	SCREW, PAN HEAD, SELF TAP, ZINC, UNF, No.4 X 1/4"
AB604023	SCREW, PAN HEAD, SELF TAP, ZINC, UNF, NO.4 X 1"
AB606021	SCREW, PAN HEAD, SELF TAP, ZINC, UNF, No.6 X 1/4"
AB606031	SCREW, PAN HEAD, SELF TAP, ZINC, UNF, No.6 X 3/8"
AB606041	SCREW, PAN HEAD, SELF TAP, ZINC, UNF, No.6 X 1/2"
AB606061	SCREW, PAN HEAD, SELF TAP, ZINC, UNF, No.6 X 3/4"
AB606081	SCREW, PAN HEAD, SELF TAP, ZINC, UNF, No.6 X 1"
AB608041	SCREW, PAN HEAD, SELF TAP, ZINC, UNF, No.8 X 1/2"
AB608061	SCREW, PAN HEAD, SELF TAP, ZINC, UNF, No.8 X 3/4"
AB608081	SCREW, PAN HEAD, SELF TAP, ZINC, UNF, No.8 X 1"
SE604041	SCREW, PAN, CROSS, ZINC, UNF, 1/4" X 1/2"
SE604051	SCREW, PAN, CROSS, ZINC, UNF, 1/4" X 5/8"
SE604061	SCREW, PAN, CROSS, ZINC, UNF, 1/4" X 3/4"
SE604071	SCREW, PAN, CROSS, ZINC, UNF, 1/4" X 7/8"
SE604081	SCREW, PAN, CROSS, ZINC, UNF, 1/4" X 1"
SE604121	SCREW, PAN, CROSS, ZINC, UNF, 1/4" X 1 1/2"

	SCREW, PAN, CROSS, ZINC, UNF, 1/4" X 3/4"
GHF117	SCREW, PAN, CROSS, ZINC, UNF, 1/4" X 3/4"
SE605081	SCREW, PAN, CROSS, ZINC, UNF, 1/4" X 1"
SF604041	SCREW, PAN, CSK, ZINC, UNF, 1/4" X 1/2"
SF604051	SCREW, PAN, CSK, ZINC, UNF, 1/4" X 5/8"
SF604061	SCREW, PAN, CSK, ZINC, UNF, 1/4" X 3/4"
SF604071	SCREW, PAN, CSK, ZINC, UNF, 1/4" X 7/8"
SF604081	SCREW, PAN, CSK, ZINC, UNF, 1/4" X 1"
SF604083	SCREW, PAN, CSK, ZINC, UNF,
SF604101	SCREW, PAN, CSK, ZINC, UNF,
SF604121	SCREW, PAN, CSK, ZINC, UNF, 1/4" X 1 1/2"
SF605061	SCREW, PAN, CSK, ZINC, UNF, 5/16" X 3/4"
SF605081	SCREW, PAN, CSK, ZINC, UNF, 5/16" X 1"
GHF431	SCREW, PK, No.14 x 1", SELF TAP
AD606043	SCREW, RAISED CROSS CSK HEAD, SELF TAP, CHROME, NO.6 X 1/2"
AD606053	SCREW, RAISED CROSS CSK HEAD, SELF TAP, CHROME, NO.6 X 5/8"
AD606063	SCREW, RAISED CROSS CSK HEAD, SELF TAP, CHROME, NO.6 X 3/4"
AD606073	SCREW, RAISED CROSS CSK HEAD, SELF TAP, CHROME, NO.6 X 7/8"
AD608033	SCREW, RAISED CROSS CSK HEAD, SELF TAP, CHROME, NO.8 X 3/8"
AD608053	SCREW, RAISED CROSS CSK HEAD, SELF TAP, CHROME, NO.8 X 5/8"
AD608073	SCREW, RAISED CROSS CSK HEAD, SELF TAP, CHROME, NO.8 X 7/8"
AD610063	SCREW, RAISED CROSS CSK HEAD, SELF TAP, CHROME, NO.10 X 3/4"
SG604083	SCREW, RSD HD, CSK, CHROME, UNF, 1/4" X 1"
SG604103	SCREW, RSD HD, CSK, CHROME, UNF, 1/4" X 1 1/4"
SG605061	SCREW, RSD HD, CSK, ZINC, UNF, 5/16" X 3/4"
GHF400	SCREW, SELF TAP, ZINC No.6 X 1/2"(AC606041)
SH504031	SCREW, SET, HEX HEAD, UNC, 1/4" X 3/8"
SH504041	SCREW, SET, HEX HEAD, UNC, 1/4" X 1/2"
SH504051	SCREW, SET, HEX HEAD, UNC, 1/4" X 5/8"
SH504061	SCREW, SET, HEX HEAD, UNC, 1/4" X 3/4"
SH504071	SCREW, SET, HEX HEAD, UNC, 1/4" X 7/8"
SH504081	SCREW, SET, HEX HEAD, UNC, 1/4" X 1"
SH504091	SCREW, SET, HEX HEAD, UNC, 1/4" X 1 1/8"
SH504101	SCREW, SET, HEX HEAD, UNC, 1/4" X 1 1/4"
SH504111	SCREW, SET, HEX HEAD, UNC, 1/4" X 1 3/8"
SH504121	SCREW, SET, HEX HEAD, UNC, 1/4" X 1 1/2"
SH504141	SCREW, SET, HEX HEAD, UNC, 1/4" X 1 3/4"
SH504181	SCREW, SET, HEX HEAD, UNC, 1/4" X 2 1/4"
HU503	SCREW, SET, HEX HEAD, UNF, 3/16" X 3/8"
HU504	SCREW, SET, HEX HEAD, UNF, 3/16" X 1/2"
HU505	SCREW, SET, HEX HEAD, UNF, 3/16" X 5/8"
HU506	SCREW, SET, HEX HEAD, UNF, 3/16" X 3/4"
HU507	SCREW, SET, HEX HEAD, UNF, 3/16" X 7/8"
HU508	SCREW, SET, HEX HEAD, UNF, 3/16" X 1"
SH604031	SCREW, SET, HEX HEAD, UNF, 1/4" X 3/8"
SH604041	SCREW, SET, HEX HEAD, UNF, 1/4" X 1/2"
SH604051	SCREW, SET, HEX HEAD, UNF, 1/4" X 5/8"
SH604061	SCREW, SET, HEX HEAD, UNF, 1/4" X 3/4"
SH604071	SCREW, SET, HEX HEAD, UNF, 1/4" X 7/8"
SH604081	SCREW, SET, HEX HEAD, UNF, 1/4" X 1"
SH604091	

	SCREW, SET, HEX HEAD, UNF, 1/4" X 1 1/8"
SH604101	SCREW, SET, HEX HEAD, UNF, 1/4" X 1 1/4"
SH604111	SCREW, SET, HEX HEAD, UNF, 1/4" X 1 3/8"
SH604121	SCREW, SET, HEX HEAD, UNF, 1/4" X 1 1/2"
SH604141	SCREW, SET, HEX HEAD, UNF, 1/4" X 1 3/4"
SH604161	SCREW, SET, HEX HEAD, UNF, 1/4" X 2"
SH605031	SCREW, SET, HEX HEAD, UNF, 5/16" X 3/8"
SH605041	SCREW, SET, HEX HEAD, UNF, 5/16" X 1/2"
SH605051	SCREW, SET, HEX HEAD, UNF, 5/16" X 5/8"
SH605061	SCREW, SET, HEX HEAD, UNF, 5/16" X 3/4"
SH605071	SCREW, SET, HEX HEAD, UNF, 5/16" X 7/8"
SH605081	SCREW, SET, HEX HEAD, UNF, 5/16" X 1"
SH605091	SCREW, SET, HEX HEAD, UNF, 5/16" X 1 1/8"
SH605101	SCREW, SET, HEX HEAD, UNF, 5/16" X 1 1/4"
SH605111	SCREW, SET, HEX HEAD, UNF, 5/16" X 1 3/8"
SH605121	SCREW, SET, HEX HEAD, UNF, 5/16" X 1 1/2"
SH605141	SCREW, SET, HEX HEAD, UNF, 5/16" X 1 3/4"
SH605151	SCREW, SET, HEX HEAD, UNF, 5/16" X 1 7/8"
SH605161	SCREW, SET, HEX HEAD, UNF, 5/16" X 2"
SH605181	SCREW, SET, HEX HEAD, UNF, 5/16" X 2 1/4"
SH605201	SCREW, SET, HEX HEAD, UNF, 5/16" X 2 1/2"
SH605221	SCREW, SET, HEX HEAD, UNF, 5/16" X 2 3/4"
SH605241	SCREW, SET, HEX HEAD, UNF, 5/16" X 3"
SH606031	SCREW, SET, HEX HEAD, UNF, 3/8" X 3/8"
SH606041	SCREW, SET, HEX HEAD, UNF, 3/8" X 1/2"
SH606051	SCREW, SET, HEX HEAD, UNF, 3/8" X 5/8"
SH606061	SCREW, SET, HEX HEAD, UNF, 3/8" X 3/4"
SH606071	SCREW, SET, HEX HEAD, UNF, 3/8" X 7/8"
SH606081	SCREW, SET, HEX HEAD, UNF, 3/8" X 1"
SH606091	SCREW, SET, HEX HEAD, UNF, 3/8" X 1 1/8"
SH606101	SCREW, SET, HEX HEAD, UNF, 3/8" X 1 1/4"
SH606111	SCREW, SET, HEX HEAD, UNF, 3/8" X 1 3/8"
SH606121	SCREW, SET, HEX HEAD, UNF, 3/8" X 1 1/2"
SH606141	SCREW, SET, HEX HEAD, UNF, 3/8" X 1 3/4"
SH606161	SCREW, SET, HEX HEAD, UNF, 3/8" X 2"
SH606181	SCREW, SET, HEX HEAD, UNF, 3/8" X 2 1/4"
SH606201	SCREW, SET, HEX HEAD, UNF, 3/8" X 2 1/2"
SH607051	SCREW, SET, HEX HEAD, UNF, 7/16" X 5/8"
SH607061	SCREW, SET, HEX HEAD, UNF, 7/16" X 3/4"
SH607071	SCREW, SET, HEX HEAD, UNF, 7/16" X 7/8"
SH607081	SCREW, SET, HEX HEAD, UNF, 7/16" X 1"
SH607091	SCREW, SET, HEX HEAD, UNF, 7/16" X 1 1/8"
SH607101	SCREW, SET, HEX HEAD, UNF, 7/16" X 1 1/4"
SH607111	SCREW, SET, HEX HEAD, UNF, 7/16" X 1 3/8"
SH607121	SCREW, SET, HEX HEAD, UNF, 7/16" X 1 1/2"
SH607141	SCREW, SET, HEX HEAD, UNF, 7/16" X 1 3/4"
SH607161	SCREW, SET, HEX HEAD, UNF, 7/16" X 2"
SH607181	SCREW, SET, HEX HEAD, UNF, 7/16" X 2 1/4"
SH608041	SCREW, SET, HEX HEAD, UNF, 1/2" X 1/2" S
SH608051	SCREW, SET, HEX HEAD, UNF, 1/2" X 5/8" S
SH608061	

	SCREW, SET, HEX HEAD, UNF, 1/2" X 1" SH6
SH608121	SCREW, SET, HEX HEAD, UNF, 1/2" X 1 1/2"
SH608141	SCREW, SET, HEX HEAD, UNF, 1/2" X 1 3/4"
SH608201	SCREW, SET, HEX HEAD, UNF, 1/2" X 2 1/2"
ZCS610	SCREW, SET, HIGH TENSILE, UNC, 3/8" X 1 1/4"
ZCS508	SCREW, SET, HIGH TENSILE, UNC, 5/16" X 1"
ZCS505	SCREW, SET, HIGH TENSILE, UNC, 5/16" X 5/8"
ZCS507	SCREW, SET, HIGH TENSILE, UNC, 5/16" X 7/8"
18G8579B	SEALS 7/8" DIA SERVO
CHS2518	STUD, 5/16"x2-1/4, UNC/UNF
58688	STUD, UNC BOTH ENDS, 3/8" X 1 11/16"
58917	STUD, UNC BOTH ENDS, 3/8" X 1 15/16"
101442	STUD, UNC BOTH ENDS, 3/8" X 1 5/8"
102474	STUD, UNC BOTH ENDS, 3/8" X 2 1/16"
107055	STUD, UNC BOTH ENDS, 3/8" X 2 3/8"
115696	STUD, UNC BOTH ENDS, 3/8" X 1 13/16"
TE604081	STUD, UNF BOTH ENDS, 1/4" X 1"
TE604091	STUD, UNF BOTH ENDS, 1/4" X 1 1/8"
TE604101	STUD, UNF BOTH ENDS, 1/4" X 1 1/4"
TE605101	STUD, UNF BOTH ENDS, 5/16" X 1 1/4"
TE605111	STUD, UNF BOTH ENDS, 5/16" X 1 3/8"
TE605121	STUD, UNF BOTH ENDS, 5/16" X 1 1/2"
TE605131	STUD, UNF BOTH ENDS, 5/16" X 1 5/8"
TE605141	STUD, UNF BOTH ENDS, 5/16" X 1 3/4"
TE605151	STUD, UNF BOTH ENDS, 5/16" X 1 7/8"
TE605181	STUD, UNF BOTH ENDS, 5/16" X 2 1/4"
TE605201	STUD, UNF BOTH ENDS, 5/16" X 2 1/2"
TE605221	STUD, UNF BOTH ENDS, 5/16" X 2 3/4"
TE605251	STUD, UNF BOTH ENDS, 5/16" X 3 1/8"
TE605291	STUD, UNF BOTH ENDS, 5/16" X 3 5/8"
TE606101	STUD, UNF BOTH ENDS, 3/8" X 1 1/4"
TE606111	STUD, UNF BOTH ENDS, 3/8" X 1 3/8"
TE606121	STUD, UNF BOTH ENDS, 3/8" X 1 1/2"
TE606141	STUD, UNF BOTH ENDS, 3/8" X 1 3/4"
TE606151	STUD, UNF BOTH ENDS, 3/8" X 1 7/8"
TE504081	STUD, UNF ONE END UNC THE OTHER, 1/4" X 1"
TE504131	STUD, UNF ONE END UNC THE OTHER, 1/4" X 1 5/8"
TE505091	STUD, UNF ONE END UNC THE OTHER, 5/16" X 1 1/8"
TE505111	STUD, UNF ONE END UNC THE OTHER, 5/16" X 1 3/8"
TE505121	STUD, UNF ONE END UNC THE OTHER, 5/16" X 1 1/2"
TE505131	STUD, UNF ONE END UNC THE OTHER, 5/16" X 1 5/8"
TE505141	STUD, UNF ONE END UNC THE OTHER, 5/16" X 1 3/4"
TE505151	STUD, UNF ONE END UNC THE OTHER, 5/16" X 1 7/8"
TE505161	STUD, UNF ONE END UNC THE OTHER, 5/16" X 2"
TE505181	STUD, UNF ONE END UNC THE OTHER, 5/16" X 2 1/4"
TE505201	STUD, UNF ONE END UNC THE OTHER, 5/16" X 2 1/2"
TE505221	STUD, UNF ONE END UNC THE OTHER, 5/16" X 2 3/4"
TE505241	STUD, UNF ONE END UNC THE OTHER, 5/16" X 3"
TE505261	STUD, UNF ONE END UNC THE OTHER, 5/16" X 3 1/4"
TE505271	STUD, UNF ONE END UNC THE OTHER, 5/16" X 3 3/8"
TE505281	

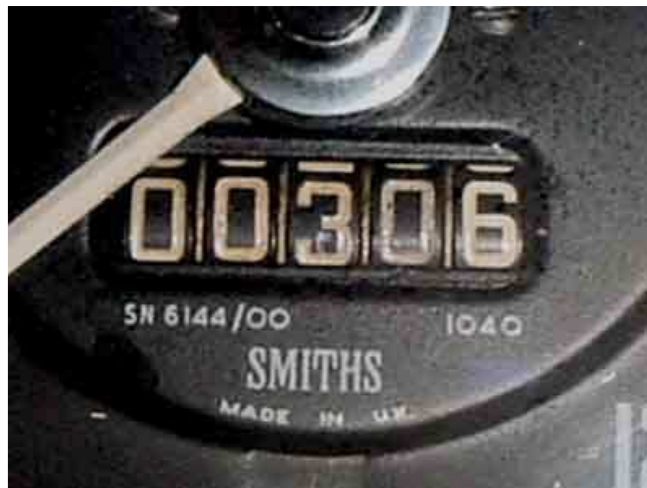
	STUD, UNF ONE END UNC THE OTHER, 5/16" X 3 1/2"
TE505341	STUD, UNF ONE END UNC THE OTHER, 5/16" X 4 1/4"
TE506101	STUD, UNF ONE END UNC THE OTHER, 3/8" X 1 5/16"
TE506131	STUD, UNF ONE END UNC THE OTHER, 3/8" X 1 5/8"
TE506141	STUD, UNF ONE END UNC THE OTHER, 3/8" X 1 3/4"
TE506161	STUD, UNF ONE END UNC THE OTHER, 3/8" X 2"
TE506201	STUD, UNF ONE END UNC THE OTHER, 3/8" X 2 1/2"
TE506361	STUD, UNF ONE END UNC THE OTHER, 3/8" X 3 1/2"
1B3664	WASHER FIBRE 5/8"
6K431	WASHER, CRUSH, 3/4"
2K5291	WASHER, FELT 1/4"
6K690	WASHER, FELT 3/16"
2K5820	WASHER, FELT 3/8"
GHF314	WASHER, FLAT, LARGE 1/4 X 1" OD
PWP204	WASHER, FLAT, LARGE OD, CHROME, 1/4"
PWZ202	WASHER, FLAT, LARGE OD, ZINC, NO.6
PWZ203	WASHER, FLAT, LARGE OD, ZINC, NO.10
PWZ204	WASHER, FLAT, LARGE OD, ZINC, 1/4"
PWZ205	WASHER, FLAT, LARGE OD, ZINC, 5/16"
PWZ206	WASHER, FLAT, LARGE OD, ZINC, 3/8"
PWZ207	WASHER, FLAT, LARGE OD, ZINC, 7/16"
PWZ208	WASHER, FLAT, LARGE OD, ZINC, 1!"
PWZ305	WASHER, FLAT, LARGE OD, ZINC, 5/16" X 7/8"
PWZ306	WASHER, FLAT, LARGE OD, ZINC, 3/8" X 1"
PWZ307	WASHER, FLAT, LARGE OD, ZINC, 7/16" X 1 1/8"
GHF316	WASHER, FLAT, LARGE, 3/8 X 1-3/8" OD
GHF315	WASHER, FLAT, LARGE, 5/16 X 1-1/4" OD
PWN105	WASHER, FLAT, STANDARD, PLAIN, 5/16"
PWN106	WASHER, FLAT, STANDARD, PLAIN, 3/8"
PWZ102	WASHER, FLAT, STANDARD, ZINC, NO.6
PWZ103	WASHER, FLAT, STANDARD, ZINC, NO.10
PWZ104	WASHER, FLAT, STANDARD, ZINC, 1/4"
PWZ105	WASHER, FLAT, STANDARD, ZINC, 5/16"
PWZ106	WASHER, FLAT, STANDARD, ZINC, 3/8"
PWZ107	WASHER, FLAT, STANDARD, ZINC, 7/16"
PWZ108	WASHER, FLAT, STANDARD, ZINC, 1"
AEC340	WASHER, LOCKTAB, 1/4" (LOCKS TWO BOLTS)
ACA5521	WASHER, PLAIN, 1/2"
PWZ110	WASHER, PLAIN, REPAIR, 5/8"
WM69	WASHER, PLAIN, REPAIR, 7/16"
WP105	WASHER, PLAIN, REPAIR, 5/16"
WP12	WASHER, PLAIN, REPAIR, 9/16"
WP120	WASHER, PLAIN, REPAIR, 1/4"
WP130	WASHER, PLAIN, REPAIR, 3/8"
WP3	WASHER, PLAIN, REPAIR, NO.6
WP4	WASHER, PLAIN, REPAIR, NO.8
WP5	WASHER, PLAIN, REPAIR, 3/16"
GHF300	WASHER, PLAIN, STANDARD, 1/4"
GHF301	WASHER, PLAIN, STANDARD, 5/16"
GHF302	WASHER, PLAIN, STANDARD, 3/8"
GHF303	

	WASHER, PLAIN, STANDARD, 7/16"
GHF304	WASHER, PLAIN, STANDARD, 1/2"
GHF306	WASHER, PLAIN, STANDARD, 3/16"
GHF361	WASHER, SEALING, COPPER, 1/4"
GHF362	WASHER, SEALING, COPPER, 5/16"
GHF363	WASHER, SEALING, COPPER, 3/8"
GHF364	WASHER, SEALING, COPPER, 7/16"
GHF365	WASHER, SEALING, COPPER, 1/2"
GHF342	WASHER, SEALING, FIBRE, 1/4"
GHF343	WASHER, SEALING, FIBRE, 5/16"
GHF344	WASHER, SEALING, FIBRE, 3/8"
GHF345	WASHER, SEALING, FIBRE, 7/16"
GHF346	WASHER, SEALING, FIBRE, 1/2"
GHF347	WASHER, SEALING, FIBRE, 9/16"
GHF348	WASHER, SEALING, FIBRE, 5/8"
WF505	WASHER, SEALING, FIBRE, 3/16"
WE600041	WASHER, SHAKEPROOF, EXTERNAL STAR, 1/4"
WE600051	WASHER, SHAKEPROOF, EXTERNAL STAR, 5/16"
WE600061	WASHER, SHAKEPROOF, EXTERNAL STAR, 3/8"
WE600071	WASHER, SHAKEPROOF, EXTERNAL STAR, 7/16"
WE600081	WASHER, SHAKEPROOF, EXTERNAL STAR, 1/2"
WE600101	WASHER, SHAKEPROOF, EXTERNAL STAR, 5/8"
WE702101	WASHER, SHAKEPROOF, EXTERNAL STAR, 3/16"
WE704061	WASHER, SHAKEPROOF, EXTERNAL STAR, No. 6
LWZ505	WASHER, SHAKEPROOF, EXTERNAL TEETH, ZINC, 5/16"
LWZ510	WASHER, SHAKEPROOF, EXTERNAL TEETH, ZINC, 5/8"
GHF320	WASHER, SHAKEPROOF, INTERNAL STAR, 3/16"
GHF321	WASHER, SHAKEPROOF, INTERNAL STAR, 1/4"
GHF322	WASHER, SHAKEPROOF, INTERNAL STAR, 5/16"
GHF323	WASHER, SHAKEPROOF, INTERNAL STAR, 3/8"
GHF324	WASHER, SHAKEPROOF, INTERNAL STAR, 7/16"
GHF325	WASHER, SHAKEPROOF, INTERNAL STAR, 1/2"
GHF326	WASHER, SHAKEPROOF, INTERNAL STAR, 5/8"
WF600041	WASHER, SHAKEPROOF, INTERNAL STAR, 1/4"
WF600051	WASHER, SHAKEPROOF, INTERNAL STAR, 5/16"
WF600061	WASHER, SHAKEPROOF, INTERNAL STAR, 3/8"
WF600071	WASHER, SHAKEPROOF, INTERNAL STAR, 7/16"
WF600081	WASHER, SHAKEPROOF, INTERNAL STAR, 1/2"
WF600091	WASHER, SHAKEPROOF, INTERNAL STAR, 9/16"
WF600101	WASHER, SHAKEPROOF, INTERNAL STAR, 5/8"
WF702101	WASHER, SHAKEPROOF, INTERNAL STAR, 3/16"
WF704061	WASHER, SHAKEPROOF, INTERNAL STAR, No. 6
LWN404	WASHER, SHAKEPROOF, INTERNAL TEETH, PLAIN, 1/4"
LWN405	WASHER, SHAKEPROOF, INTERNAL TEETH, PLAIN, 5/16"
LWZ402	WASHER, SHAKEPROOF, INTERNAL TEETH, ZINC, NO.6
LWZ403	WASHER, SHAKEPROOF, INTERNAL TEETH, ZINC, NO.10
LWZ404	WASHER, SHAKEPROOF, INTERNAL TEETH, ZINC, 1/4"
LWZ405	WASHER, SHAKEPROOF, INTERNAL TEETH, ZINC, 5/16"
LWZ408	WASHER, SHAKEPROOF, INTERNAL TEETH, ZINC, 1/2"
LWZ607	WASHER, SHAKEPROOF, INTERNAL TEETH, ZINC, 7/16"
GHF328	

	WASHER, SPRING, 3/16"
AJD7721	WASHER, SPRING, DOUBLE COIL, 3/16"
AJD7722	WASHER, SPRING, DOUBLE COIL, 1/4"
AJD7731	WASHER, SPRING, DOUBLE COIL, 5/16"
AJD7742	WASHER, SPRING, DOUBLE COIL, 3/8"
LWN304	WASHER, SPRING, HEAVY, PLAIN, 1/4"
LWN305	WASHER, SPRING, HEAVY, PLAIN, 5/16"
LWN306	WASHER, SPRING, HEAVY, PLAIN, 3/8"
LWN307	WASHER, SPRING, HEAVY, PLAIN, 7/16"
LWZ303	WASHER, SPRING, HEAVY, ZINC, NO.10
LWZ304	WASHER, SPRING, HEAVY, ZINC, 1/4"
LWZ305	WASHER, SPRING, HEAVY, ZINC, 5/16"
LWZ306	WASHER, SPRING, HEAVY, ZINC, 3/8"
LWZ307	WASHER, SPRING, HEAVY, ZINC, 7/17"
LWZ308	WASHER, SPRING, HEAVY, ZINC, 1/2"
LWN204	WASHER, SPRING, MEDIUM, PLAIN, 1/4"
LWN205	WASHER, SPRING, MEDIUM, PLAIN, 5/16"
LWN206	WASHER, SPRING, MEDIUM, PLAIN, 3/8"
LWZ202	WASHER, SPRING, MEDIUM, ZINC, NO.6
LWZ203	WASHER, SPRING, MEDIUM, ZINC, NO.10
LWZ204	WASHER, SPRING, MEDIUM, ZINC, 1/4"
LWZ205	WASHER, SPRING, MEDIUM, ZINC, 5/16"
LWZ206	WASHER, SPRING, MEDIUM, ZINC, 3/8"
LWZ207	WASHER, SPRING, MEDIUM, ZINC, 7/16"
LWZ208	WASHER, SPRING, MEDIUM, ZINC, 1/2"
LWZ212	WASHER, SPRING, MEDIUM, ZINC, 3/4"
GHF331	WASHER, SPRING, SINGLE COIL, 1/4"
GHF332	WASHER, SPRING, SINGLE COIL, 5/16"
GHF333	WASHER, SPRING, SINGLE COIL, 3/8"
GHF334	WASHER, SPRING, SINGLE COIL, 7/16"
GHF335	WASHER, SPRING, SINGLE COIL, 1/2"
GHF336	WASHER, SPRING, SINGLE COIL, 5/8"
WL700061	WASHER, SPRING, SINGLE COIL, No.6
WL700081	WASHER, SPRING, SINGLE COIL, No.8
WL700101	WASHER, SPRING, SINGLE COIL, 3/16"

Speedo Reference Numbers and Turns per Mile

An SN6144/00 1040tpm for a UK Mk1 3-synch non-OD car - reference number and tpms immediately below the odometer. An OD car would have an SN6144/01 1020tpm. However Jaeger speedos seem to be 20tpm higher i.e. 1060 and 1040 respectively.



An SN6144/23A 1280tpm for a Mk2 68-73 UK 4-synch OD chrome bumper car - again reference number and tpm immediately below the odometer. Oddly although the TPMs were the same OD and non-OD speedos have different reference numbers. The non-OD equivalent for this would be SN6144/20.



1974 model year cars have a BS suffix to the reference number but are otherwise interchangeable in both directions with the earlier Mk2 speedos.



A 1000rpm as would be fitted to a UK rubber bumper car (OD and non-OD were the same) - reference number and tpms immediately below the odometer as before. However this particular reference number is not applicable to the MGB, but is from a Midget/Sprite.



An 80mm KPH speedo as fitted to 4-cylinder cars from September 74 to June 76, i.e. rubber bumper cars prior to the plastic dash. Not the clearest picture, but it is just possible to read the reference number as SN-5230/14 and 620 turns per kilometre.



A 960rpm from a factory V8 - reference number and tpms immediately above the lower rim. The same speedo was used throughout i.e. both chrome bumper and rubber bumper. Later plastic-bezel gauges (4-cylinder cars) had the numbers in the same place.



Speedo Repair

Anthony Rhodes has produced a very useful document ['Repairing Jaeger and Smiths Speedometers'](#) as typically used in MGBs. This is the 2002 version (there is also a 2000), one source of which indicates there is a 2004 version in the pipeline. However as I only came across that reference in 2014 it seems that it was never produced for some reason. It also does not go into much detail on the odometers, hence this page, which should be read in conjunction with his document.

[Removing the mechanism from the case](#)

[How the odometers work](#)

[Changing the mileage reading](#)

[Reassembly to the case](#)

[What was wrong with Bee's trip?](#)

Removing the mechanism from the case



The bezel has six (on the 4" instruments) tabs that fit over a flange around the case. There are six corresponding cut-outs (arrowed) in the flange, so the bezel needs to be twisted round until the tabs line-up with the cut-outs. If it's never been off before it will probably be stuck fast, but try first. Lever each of the tabs back a little at a time then try twisting, until it comes off. Only bend back the tabs the minimum amount, or it will distort the side of the bezel and be visible when fitted. The only seal is between the bezel and the glass, so it shouldn't be that making it difficult to remove. The glass should be stuck to the bezel seal so come away

with the bezel, the edge reflector may also come away or be left inside the case. In the latter case (ho ho) it should hook out easily enough.

Getting the mechanism out of the case in two speedos I have is nothing like as simple as Rhodes describes. He says:

"Remove the two screws on the back and, if necessary, the tiny screw holding the reset cable (TR2-4). Then press the reset shaft (TR2-4) into the case and then push the threaded end (where the speedometer cable attaches) inward."



For a start on mine there is a roll-pin connecting the reset knob to the spindle that has to be pressed out, but more importantly the spindle still projects through the case by about 3/4", which is a lot more than he shows for Triumph speedos. It doesn't push up into the case more than a fraction, and that holds the lower part of the mechanism back in the case, and only the top tilts forwards. This means the threaded boss for the cable tilts, which jams in the hole in the back of the case, even if the rubber gasket is pushed out of the way. The dial also tilts, and the lower edge of that fouls the lower half of the case. You need to remove the pointer then the dial in order

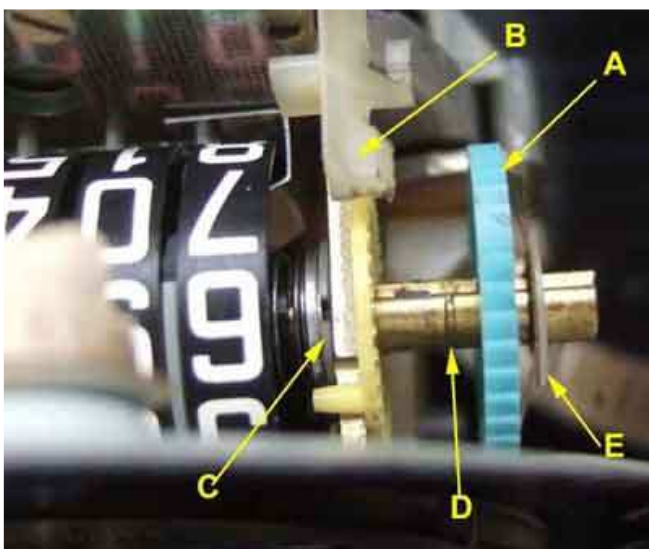
to get the guts out, but as Rhodes says MG pointers are tighter on the spindles than Triumph speedos! He gives a [method](#) that works easily enough once the mechanism is out, but that's no help at this stage. The only way I have been able to do it - being nervous about levering on the pointer too much in case it damaged it or the spindle - is by removing the screws from the face, inverting the speedo so that the dial drops down onto the back of the pointer, then as the mechanism starts tilting in the case, ease the lower edge of the dial over the edge of the case. There is no clearance, so even this method requires some force, raising the possibility of damage to dial, pointer or spindle. The first one I did came out that way,

but when trying to reverse the process to put it back in the case, the pointer pinged off! I was sure I had broken the spindle, but fortunately it had only become detached, and [refitting it](#) in the correct place was easy enough. You will probably need to push the gasket out of the screw holes so that it comes out with the mechanism, as getting that off the threaded input boss while the mechanism is half way out isn't easy.



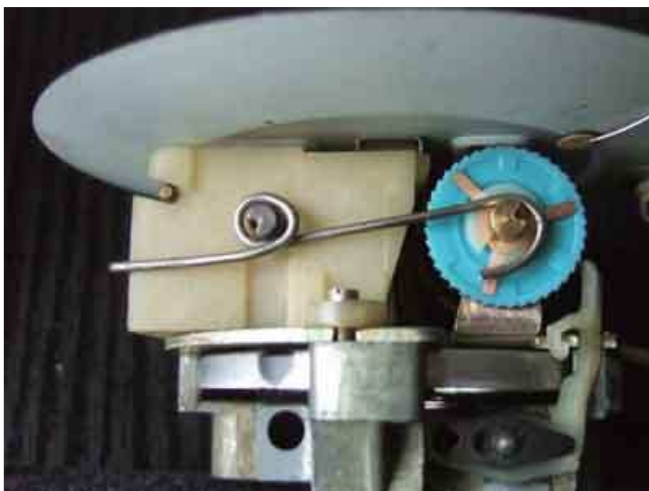
The second time I opened up Bee's I didn't want to force it, so extended the hole that the reset spindle protrudes through into a slot, and that gave just enough forwards movement of the mechanism so the dial cleared the case while still attached to the frame. I cut it roughly with a pair of tin-snips with the mechanism still fitted, then cleaned it up after removal. This allows just enough additional forward movement for the dial to clear the edge of the case while still screwed to the mechanism. The felt washer still covers the extended hole, but you could always fit a bigger piece.

Once out of the case his description of removing the pointer: "Remove the pointer by gently turning the drag cup until the pointer is at 60 mph. Then gently hold the drag cup in place. Hold the pointer by the hub and pull and twist the pointer until it pops free of the spindle" did work for me. Then removing the dial exposes all the works.



Almost immediately I could see exactly what was wrong - the pawl and gear that advances the mileage one step at a time weren't engaged. The gear (A) was way out of line with the pawl (B), because the shaft on which it sits was partially withdrawn. I pushed it back which got everything working again, but very little pressure was needed to push it out again, so I had no confidence they would stay engaged. There are two split plastic locking clips (C and E) sitting in grooves in the shaft, each side of the frame. The outer one was very firm, but the inner one came out of its groove (D) all too easily. Could be the clip, or the shaft, but I didn't feel like sending off for bits yet. I reckoned if I could fashion a clip that hooked onto the frame and pressed lightly on the end of the errant shaft,

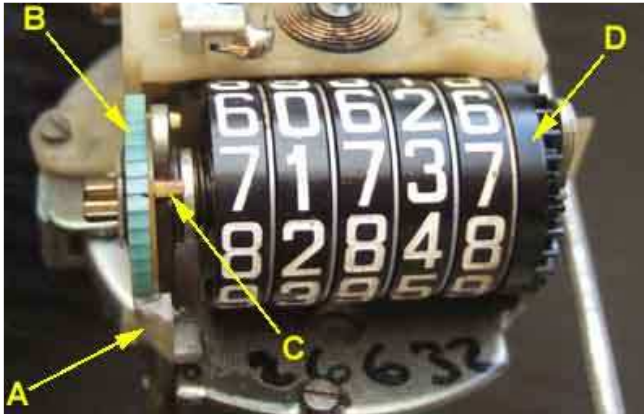
that would hold it in place.



At first I thought about a springy strip, but settled for spring wire, and half an hour or so of careful tweaking seemed to do the job, and driving with a drill sent the wheels merrily round.

How the odometers work

All Rhodes describes is how motion gets from the input shaft to the odo. The input shaft has a worm gear, with a cog engaged with it. He says the cog can have 22, 25 or 32 teeth but doesn't explain why. It will determine how many movements of the pawl occur for each turn of the speedo cable, but it's only part of how many turns of the input cable are required to advance the odometers one mile. In order for the worm and cog to mesh correctly either the worm tooth pitch will have to vary with the cog pitch if the cog diameter stays the same i.e. both components change, or if the pitches stay the same the cog will be of different diameters and even though the worm will be the same the cog's shaft will have to be closer to or further away from the worm which means a major difference in the frame.



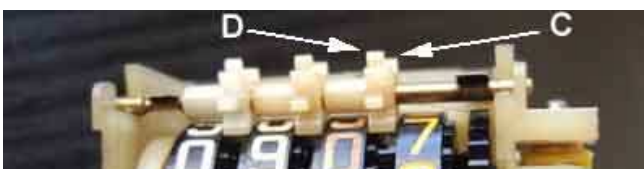
The cog is on a shaft with an offset pin at the other end, to which is attached the pawl (A). This offset pin and other features means that the pawl is pulled back **and** pushed forwards once for each full turn of the cog, and it is the push that advances the blue gear (B) on the odo one tooth. No matter which way the input shaft turns the pawl goes back and fore just the same, so irrespective of whether the car is going backwards or forwards, this mechanism means that the odometer will only go forwards, contrary to what Stephen King would have us believe in that a car going backwards will make

the mileage reduce (let alone reverse the ravages of time and miles ...). There is no spring pulling the pawl down onto the blue gear as you might expect, indeed there seems to be a finger sticking out which looks like it is exactly for that. But even though the pawl is below the blue gear, and if you pull the pawl away from the blue gear, as soon as the pawl starts moving forwards it moves smartly onto the blue gear and engages with it. However, the forces that cause the pawl to move down onto the blue gear when the car is travelling forwards, also cause to it lift away from the blue gear when the car is travelling backwards, so in fact the odo won't move at all when the car is going backwards. The blue gear is keyed onto the main odo shaft, which goes freely through all the wheels, and is keyed into the black gear (D) at the opposite end. A three-legged spring presses the blue gear against a yellow component (C) that is keyed to the frame. The blue and yellow parts have serrations on their adjacent sides which acts as a positive friction grip. This is easily defeated by the action of the pawl on the blue gear, but prevents vibration from moving it independently of the pawl.



The number of teeth on the blue gear determines (for a given worm and cog) how many movements of the pawl are required to advance the odos one mile. That causes a variation in the size of the blue gear, but because the pawl can take up any position it can cope with any size of gear, so the blue gear is potentially the only component that needs to change to get different rates of odometer movement i.e. different numbers of turns per mile, as indicated by the coding on the dial. This speedo for example takes 1280 turns to advance the odos one mile.

For each turn of the blue gear, the black gear at the other end of the main odo turns once, and this advances the units wheel of the main odo by one digit. At the same time movement of the black gear goes via an intermediate gear and turns the tenths wheel of the trip odo via another black gear, which moves that one full turn for each turn of the main odo blue and black gears. The black gear on the trip odo has a similar friction arrangement to the tenths wheel as that between the blue and yellow parts of the main odo, which means in the normal course of events movement is transmitted from the gear to the tenths wheel of the trip odo.



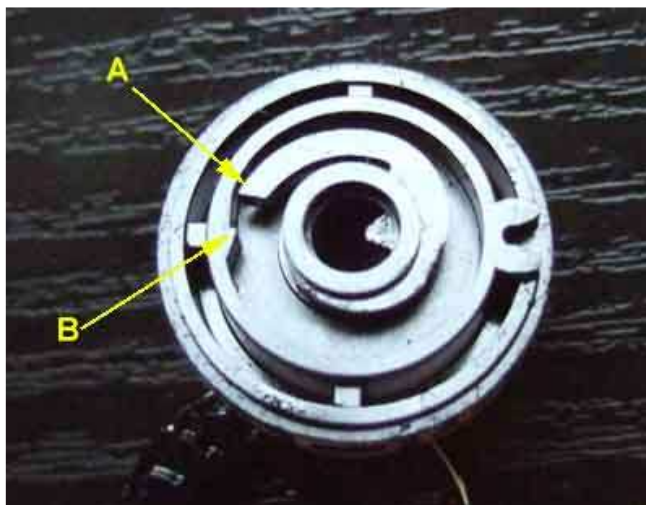
As to how movement is transmitted from one wheel to the next, it's much easier to look at the trip odo as the gears on that are external. Incidentally, it is because the gears are internal

on the main odo that makes it so hard to alter the reading, far harder than modern electronic odometers! Each wheel, on the side adjacent to the succeeding wheel (the 'up' side), has a single slot in its edge (A). This slot passes under the gear when the wheel changes from 9 back to 0 and advances the next wheel. At all other positions the only way the gear and the wheel fit together, is when one of the missing teeth (C) on a gear is facing the edge of the preceding wheel. The other side of the gear has teeth all the way round (D), as does the mating face of the next wheel up in the sequence (B). This means that each wheel turns independently of the next gear up except when it is changing from 9 back to 0, and it always moves in unison with the next wheel down when that is changing from 9 back to 0.

As the lowest wheel turns, a spring is pushing them all together, and friction is trying to turn all the wheels together, and each wheel is trying to turn its preceding gear. But because the 'up' side of each wheel only has one tooth slot in its circumference, the next gear up cannot turn, hence the next wheel up cannot turn. It is only when the digits are changing from 9 back to 0 that the single tooth slot on the 'up' side of a wheel comes round to the next gear up. The friction that is trying to turn all the wheels and gears pushes the next full gear tooth into the slot, and as the slot moves under the gear the gear turns two teeth, which advances the next wheel up by one digit. By that time the slot in the preceding wheel has passed, so the next missing tooth on the gear wheel rides on the outside of the wheel, until 9 comes round again.

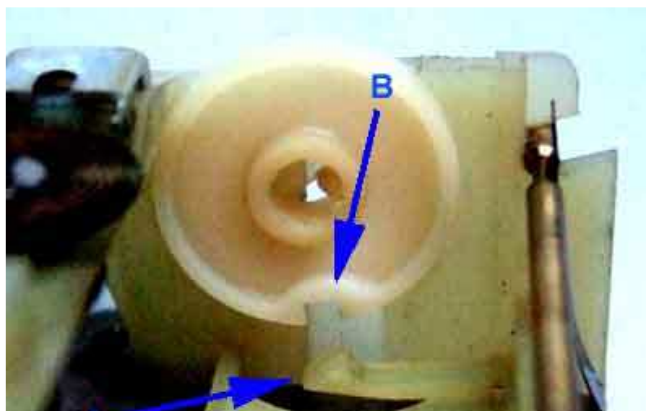


Both main and trip odos operate in the same way, but the trip has the additional complication of being resettable. This also has a keyed shaft, turned by the reset shaft that protrudes from the bottom of the dash. Each odo wheel consists of two parts - the outer with the digits, and an inner. It is the inner that is keyed to the shaft, and that rotates freely inside the outer.



The inner has a finger (A) that lies inside the outer, which has a protrusion (B) at one point, and these two act as a ratchet. As the outers turn (anti-clockwise in this image) with increasing miles, this protrusion flicks past the end of the finger. But when the reset spindle is turned, all the inners turn together, again anti-clockwise relative to the outers. So now as the finger on each inner reaches the protrusion on its outer, it locks against the protrusion, and turns its outer at the same rate. Eventually all the fingers have locked against the protrusions, and all the outers are turning together. This goes against what is described above for normal movement, but under reset conditions the wheels are forced round which pushes the gears out of the way,

lifting the pin up against the lever springs. At this time all the digits should be in line, and one keeps turning the reset spindle until all zeros are shown in the slot in the dial.



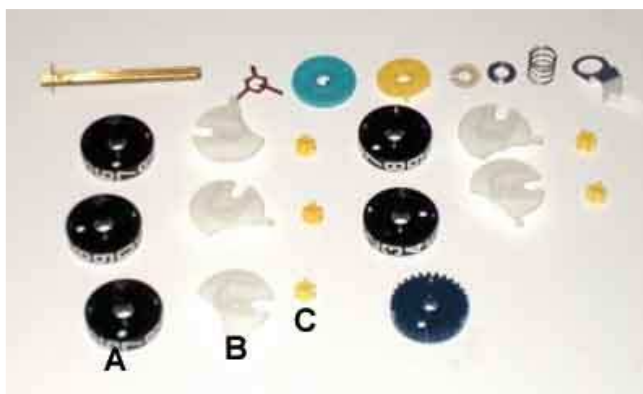
When zeros are displayed in the dial aperture a pawl (A) on the frame drops into a slot (B) on the disc (shown here above its normal position) adjacent to the hundreds wheel which is also keyed to the shaft and rotates during reset. This makes it harder (but not impossible) to turn the wheels any further, which helps the user stop at zero and not wind it past and have to go all the way round again. Note that this disc has the boss protruding more on one side, and that side goes against the frame.



as that is locked to the main odo, and the normal friction created by the serrations between the driving gear (A) and the ribs on the tenths wheel (B) is overcome to allow the tenths wheel to turn independently of the black gear.

Changing the mileage reading

With the mechanism out of the case I wanted to change the mileage reading of the main odo, in order to retain that from Bee's original. Very little info on this part in Rhodes, except to say all the bits have to be withdrawn from the frame and reassembled by hand, as short of driving the mechanism for the required 30k or so that is the only way to do it. Warnings in Rhodes of a fine coil spring that pings across the room at the slightest provocation in mind, I eased out the shaft which still leaves everything else in place between the side-walls of the frame, then gradually eased those parts towards the edge of the frame. When the centre hole just came into view, I used a thin stiff wire to push through all the components, so I could withdraw them all keeping them in the correct order, and more importantly avoid losing any parts.



Now I can separate all the components - 25! - laying them out in the correct order ready for reassembly to the required mileage, which is an extremely fiddly process. Each decade consists of the numbered wheel (A), a gear (C) which fits between adjacent wheels, and a carrier (B) to hold the gear in position. Incidentally the carrier can be either metal on earlier odos e.g. 68 to 73 MGB A suffix, or plastic on later e.g. 74 MGB BS suffix. Each wheel has a cavity both sides, the one adjacent to the preceding decade has teeth all the way round, and the other is smooth all the way round except for one position where

it will accept a tooth, similar to the trip odo. The carrier has a slot to hold the gear, and a finger which engages in a slot in the frame, which holds the gear in the correct position between the wheels. As in the trip odo the gear has to be fitted the right way round so that the 'all tooth' side goes into the succeeding wheel, but in such a position that when any digit is square in the aperture in the dial, one of the missing teeth is facing the edge of the preceding wheel. It is only like this that the preceding wheel will fit over the gear. On the 'all teeth' side there are two teeth per digit, so it's also possible to get a wheel showing half one digit and half the next through the aperture in the dial - obviously incorrect.

So it is 'simply' a matter of sliding each wheel and each gear carrier onto a shaft one at a time, with the gear slot uppermost to prevent the gear falling out, installing the gear in the carrier the right way round, with a missing tooth facing upwards, the digit in the correct position i.e. not half and half, and the fingers on the carriers all pointing in the same direction!



It took me several goes getting each wheel, carrier and gear correctly aligned. I'd work along the row, only to find that by the end one of the preceding ones had moved out of line somehow.

Finally I added the spring locator (H), spring (G), stepped washer (F - with the step facing the spring) and locking clip (E) over the end of the wire, and replaced the shaft with a thin stiff wire, keeping the wheels and black gear pressed together so nothing could slip out of place. I compressed the spring while inserting the whole assembly between the sides of the frame as far as the wire would allow - which is further than the shaft would allow, then withdrew the wire, and carefully pushed the parts further between the frame sides until I could just see the hole through the middle, and reinserted the wire. Between withdrawing and reinserting the wire is the tricky time, as everything could ping out. With the wire back in everything is safely retained, can be eased fully into position ready to withdraw the wire and reinsert the shaft. The shaft has a keyway but it only engages with the blue gear outside the frame, and the black gear at the opposite end. I'll leave it up to you as to whether you fit the locking clip (shown already fitted to shaft A), 3-legged spring (B), blue gear (C) and yellow component (D) to the shaft first then insert that from the pawl end as I did, or the other way round fitting them last. The final step is to get the fingers in the gear carriers in the slot in the frame. The later plastic ones will probably be easier in this respect as they are flexible, with the metal ones you will have to locate them before the shaft is fully in position. Note that the spring locator (H) fits round behind the 10k wheel and over the finger on that gear carrier. This centralises that end of the spring, with the stepped washer centralising the other end.

It was only when I'd done that, that I realised I'd set the mileage exactly, when really I needed to set it back a few miles, and turn it manually to check all was well before putting it back in the case and in the car. A pal had the lateral idea of driving the car with the old speedo for a few more miles, then turning the new one on manually to match. But given the salt on the roads impatience got the better of me, so I took it apart again! I wanted to achieve 60515, which was relatively convenient as I could set it to 60498 or so, then I'd only have to wind it forwards 17 miles, and could at least check the first three wheels. As it can only be put back together with the gears in the right place, and as long as I ended up with all digits in line, the others should be fine. So that was done, and by turning the blue gear by hand rather than relying on the pawl I was able to advance it pretty quickly, and all was well with both main and trip odos.

Reassembly to the case



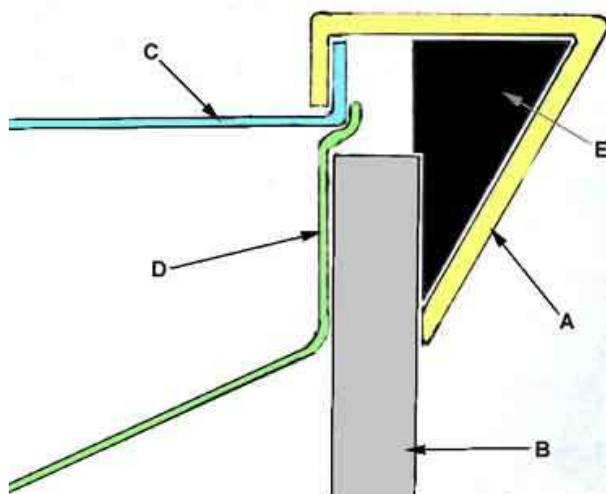
When you are finished refit the gasket to the case, and put the mechanism back in the case without dial or pointer. Fit the dial, then the pointer. There is a mark on the dial (line on MGB, spot on Triumph apparently) just below the zero, and this is the zero mph datum for the pointer. Fit the pointer over this mark, then depress the stop (it will go straight into the dial against spring pressure) and move the pointer past it. How accurate this datum is I didn't know, particularly as the small amount of friction between the pointer spindle and its bearings means that the pointer is stable either side of the mark to a certain extent. Rhodes describes a very complicated way of checking

the calibration, but all I did when I accidentally pinged the pointer off when refitting the mechanism to the case with dial and pointer already fitted, was to raise one rear wheel, run the engine at 1667rpm (for my 4-synch) in straight top, and popped the pointer back on directly over the 30mph mark! I subsequently checked it against road-side speed indicators, and it was spot-on, maybe I was just lucky. The tachometer is easy to check against an external device, of course. A slightly lower rpm - say 1620 - will give about a 1mph over-read at 30mph for both 3-synch and 4-synch boxes. A sat-nav will probably also give you a true speed reading to check the speedo against. This time having already fitted the pointer using the datum, I checked it the same way as previously. It came out either spot-on, or maybe under-reading by a fraction, but I'll leave it as it is until I get the chance to check it against a roadside sign or someone else's sat-nav.

There is some kind of seal between the glass and the bezel (bezel seal), completely hardened and cracked on both speedos, as well as a square-section O-ring between the case and the dashboard (dash seal). The only two places I have found that stock seals such as these in the UK are Holden and AES.



seal for an 88mm gauge but not for other sizes. They do list a [sponge cord seal](#) which you cut to length, in 3mm and 4mm thicknesses, 4mm being recommended for 'larger' gauges. However MGB 'half Vee' bezels have a triangular profile facing the glass. The inner edge of the bezel (B) rests right on the glass, but at the outer edge (C) there is about 7mm of depth available. The diameter of the glass is such that it fits inside the case, except that it rests on the 'reflector ring' (a pressed metal ring that is black on the front and white on the back, which reflects light from the internal bulb onto the dial). This means that the edge of the glass (A) is less than half-way between the inner and outer edges of the bezel. Even the 4mm sponge cord would just sit loosely in the gap between the edge of the glass and the outer edge of the bezel, I can't see how it would be compressed to form a seal. If it were glued close to the inner edge of the bezel, such that it was under the glass, then it would form a seal, but because of the slope of the bezel from the inner to the outer edges there would be significant pressure trying to push the seal towards the outer edge, and out from under the glass, and I can't see it staying in place.



**A - Bezel; B - Glass; C - Case;
D - Reflector; E - Mastic**

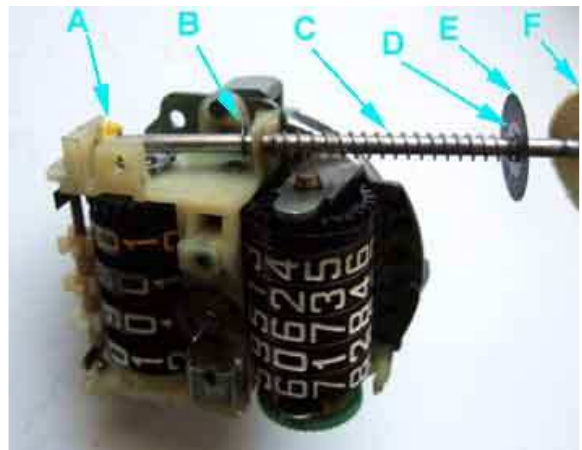
AES also have a [4" under bezel seal](#), which I'm assuming goes between the glass and the bezel. This looks to be round profile like the cord seal, but without knowing the diameter or thickness this may be no better than the cord seal. If it sat just inside the outer edge of the bezel it would be useless. If it sat just outside the inner edge, then initially it would be far too thick to allow the tabs on the bezel to fit over the case rim, **unless** in the process of fitting it was squeezed down the slope of the bezel towards the outer edge of the glass. I've seen a statement that the original bezel seal is a dum-dum type of substance i.e. a kind of non-setting mastic. There are many mastic/butyl strip/bead products around, but most end up being £15 for 8 metres which is a daft prospect for a couple of gauges. A possibility is this [Black Tack](#) at £5 although at 19mm wide it would need cutting into narrower

strips.

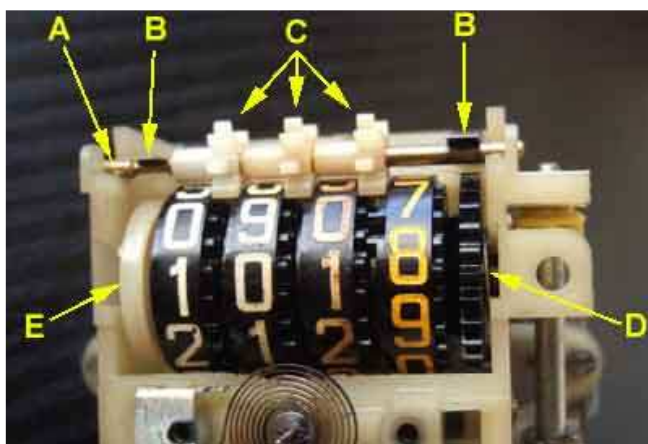
For O-ring dash seals Holden list [100mm \(4"\)](#), [80mm](#) and [52mm \(2"\)](#). AES sell [4" square section](#) and [2" square section](#) but not the 80mm as far as I can see.

What was wrong with Bee's trip?

Flushed with success, and with no prospect of taking Bee out for an extended test of the odometers now we have salt on the roads, curiosity got the better of me in terms of wanting to find out what was wrong with Bee's trip. Using the slot I had cut previously I got the mechanism out quite easily, with pointer and dial in place. That allowed me to remove the pointer by turning the cup to 60 mph and twisting and pulling as with the 'new' speedo, and remove the dial.



from the reset spindle. Remove the circlip (B) from the spindle just above where it goes through the lower part of the frame without losing it. Slide the shaft down and out of the yellow plastic gear (A), which will fall free.



Remove the gears (C) and pin (A) they turn on by lifting the pin up against pressure from the lever springs (B) above it and pulling forwards. Note that the left-hand spring sits in a thinner section of the pin to locate it. Take the gears off and refit the pin to hold the springs away from the wheels. Withdraw the shaft from the reset spindle end. Ease the wheels forwards together with spring (D) at the tenths end, and the white disc (E) from the hundreds end, and out of the frame, being careful not to damage the pointer hair spring - you may have to lift the pin up a little to do this - or lose the coil spring.



With the wheels separated you will see the inner part with the finger inside each of them. Insert the shaft into a wheel, lining up the keyway. Turn the shaft and the inner part should rotate very easily inside the outer part, at least until the reset finger locks against the protrusion. Test each of the wheels this way, and this is when I think I discovered the problem with Bee's trip.

The tenths wheel was very free, the hundreds a little stiff, but the units and tens were both quite stiff. As the problem usually occurred when changing a units or tens, I reckon the stiffness was preventing those wheels from trying to turn with the normal friction between the wheels, which was preventing the gear from going into the single slot in the tenths wheel and so moving the succeeding wheel. As to why it was stiff, I had noticed oil around the hair spring, and between the two parts of each trip wheel where one rotates inside the other. So is it possible the oil has caused the plastic to swell in some way? The white digits particularly on the trip odo are also discoloured to varying degrees, could that be from oil?

As to why oil should be so visible, many years ago I had a flicking pointer, but rather than the rapid flicking that indicates a problem with the cable it was only occurring as the tenths wheel on the trip odo moved. Taking the speedo out of the dash and testing the input shaft it did feel stiff, so I put a drop of oil on it, which freed it up, and after that the pointer was steady. Now people do say that too much grease in the cable can work its way up into the speedo and clog the works. But I did only use a drop of light machine oil, and looking at the back of the spinning magnet and cup there is no oil there, or on the frame round it, so I don't really understand how it could have appeared on the trip wheels from that source. And to be fair the odo digits have always been stained to some extent.



Cleaning the oil from the two halves of each wheel made no difference - not even making

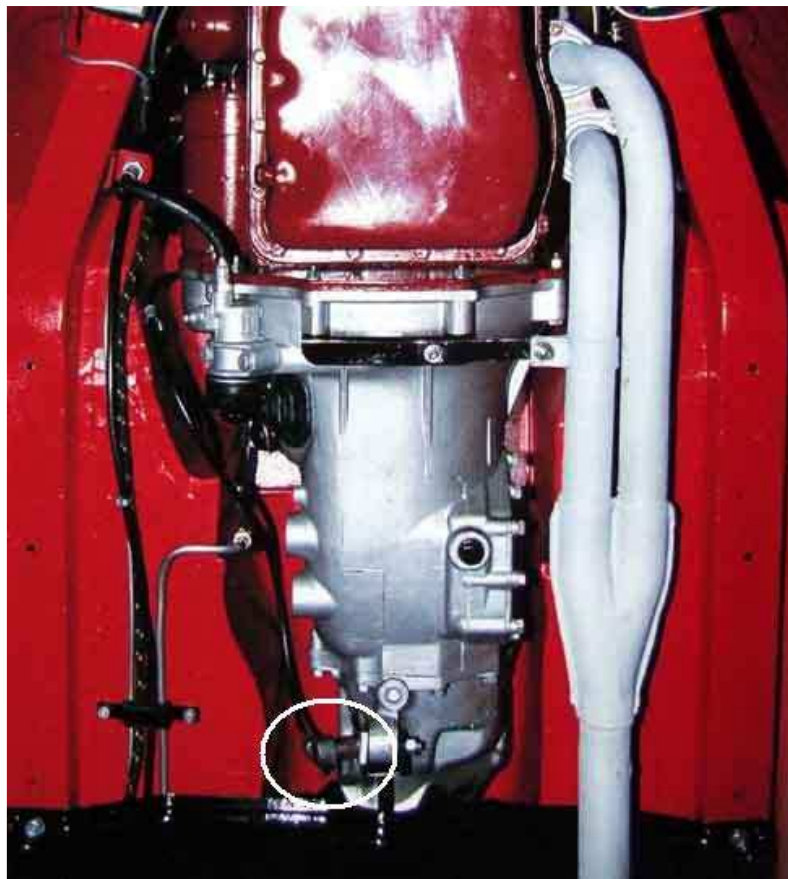
them stiffer. I pondered how I might free them up a bit, and eventually settled on putting each inner in turn on the shaft, where it is keyed, then putting the shaft in my drill-driver. A strip of fine wet-and-dry folded round the boss that fits inside the outer, and a few moments running the drill was making them freer. After that it was just a matter of reassembling and testing. Rather than running the input shaft from a drill it's much easier to use one of the black gears on either the main or trip odos as a thumbwheel which advances things much faster, slowing down as the tens (in my case) was about to advance to see if there is any tendency to stick, and after a couple of hundred 'miles' all seems well.

Speedo Cable Routing

Right-angle drive ([eBay](#)) ...



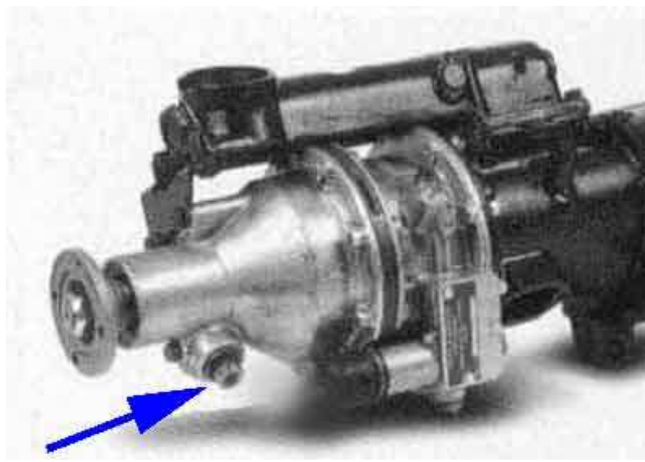
... on this (circled) 1983 non-OD car, connected in front of the removable cross-member. This part of the non-OD gearbox is much narrower than the OD. (*Clausager*)



On my 73 roadster the cable (arrowed) comes off the output of the OD conveniently (not!) above the fixed crossmember then turns forwards and under the floor to meet the pipes and cables running the length of the floor, and over the removable cross-member. The notch in the fixed crossmember shows that the cable is designed to exit at right-angles to the gearbox, and then turn forwards. The 1964 3-synch non-OD car pictured in Clausager (p76) does not have this notch.

It also appears to show that my removable crossmember is the wrong way round! The downward dip for the earlier restraint rod is supposed to face forwards, and the hole for the restraint rod should face rearwards. Neither is the lower bracket for the restraint pin bolted to the cross-member.

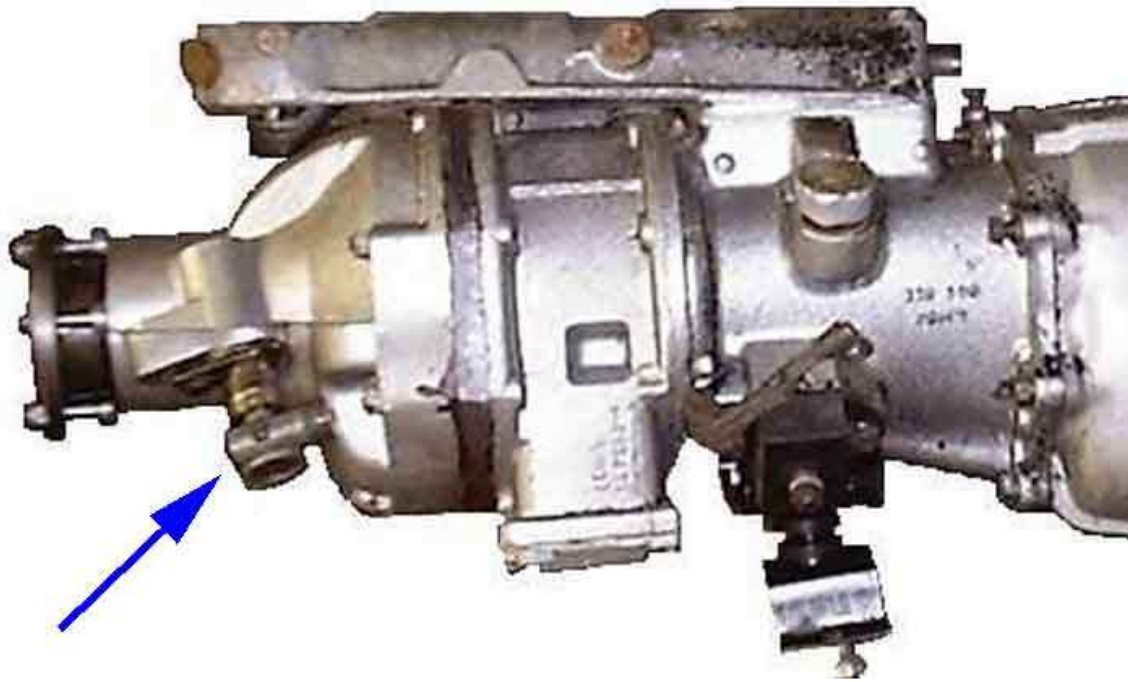
Three-synch OD: The speed take-off is spaced back from the bulge of the OD a little, at a right-angle, and the bulge is less and tapered. This creates room for a right-angle drive. ([Chicagoland MG Club](#))



Four-synch non-OD: Close to the wider part of the main gearbox casing and bellhousing, also angled forwards, which means a right-angle drive can only be fitted if the cable leaves it virtually straight up or straight down. Without the right-angle drive the cable will already be pointing forwards by a significant amount, the remainder of the curve forwards can be accomplished under the floor to meet the other pipes and cables. ([Chicagoland MG Club](#))



Rubber-bumper four-synch OD: Someone has fitted a right-angle drive to this, but because the take-off is angled forwards, and is very close to the wider part of the OD, the cable can only be attached to it if the right-angle drive points upwards (or downwards) which is counter-productive and as we have seen it isn't needed anyway. ([Chicagoland MG Club](#))



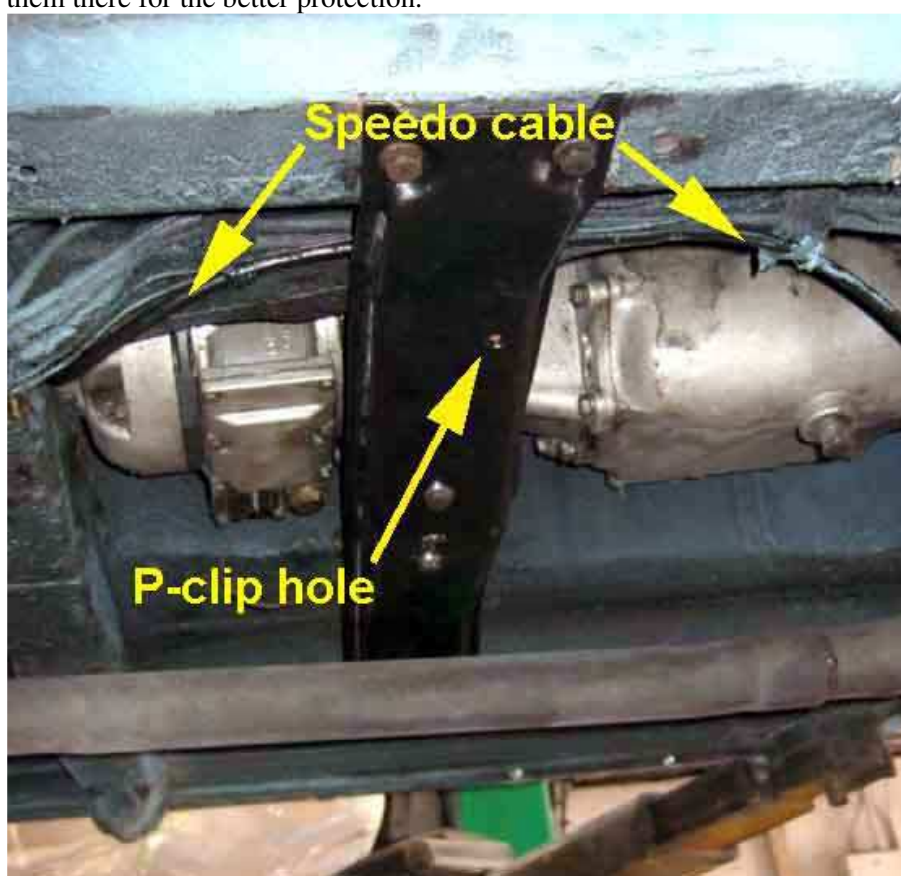
The speedo cable should pass below the crossmember and be supported with a P-clip in a tapped hole (red arrow and circle). But as Bee's crossmember is the wrong way round it passes with the pipes and cables above it ...



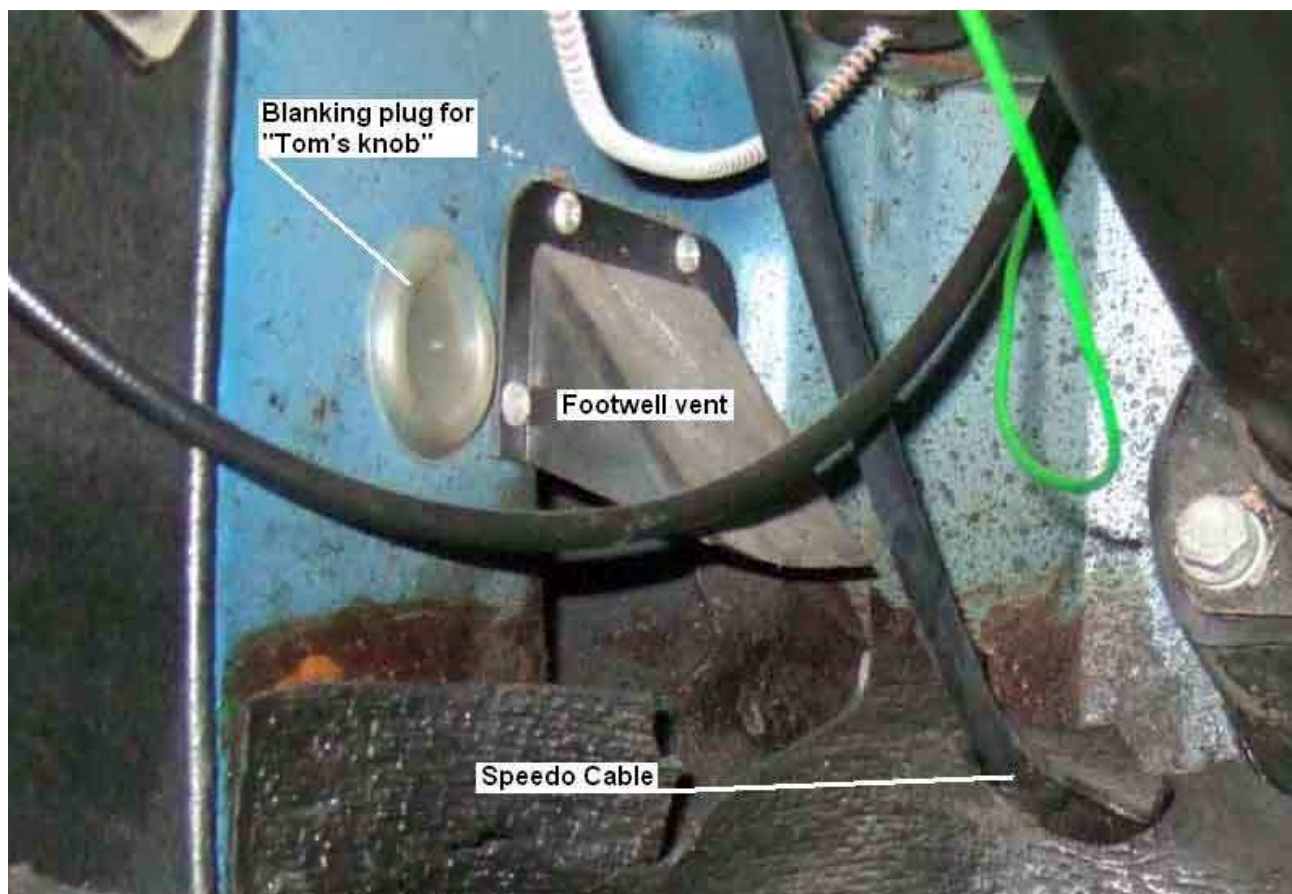
... and crosses back to the edge of the tunnel then goes upwards to the hole in the bulkhead at the top of the (RHD) drivers footrest. Also just visible is the heater airbox drain tube (AKA Tom's Knob)



Vee's crossmember being the right way round has the tapped hole for the P-clip that would support the cable under the crossmember tucked up into the recess. In the correct position the cable would take a slightly shorter, straighter route, albeit more exposed. But as both cables have always been cable-tied above the crossmember with the other cables and pipes in my ownership and haven't exhibited any problems with routing, I've left them there for the better protection.



Speedo cable entry in the footwell of an RHD. May also be the same for some LHD with a right-angle drive at the speedo head



1974 LHD car from Clausager, showing (probably) how the speedo cable and heat control cable exit the bulkhead



The EGR valve service indicator counter (arrowed) positioned on the heater shelf (*Photo Bill Etter*)



© Copyright 1999 to 2018 I.T. Answers.
<http://www.mgb-stuff.org.uk/>